

TZtouch program update instructions via full OS (operating system) and application

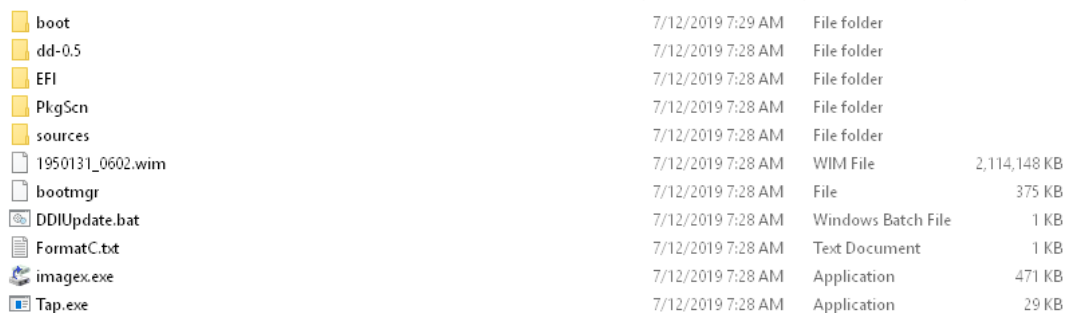
Overview: This update requires a minimum of 4GB SD card, but less than a 64GB. The SD card has to be formatted into a bootable SD card before any files are copied onto it. If this is not done, the software update will not work.

1. Preparation

- ✓ Bootable, minimum 4GB SD card (less than 64GB). (See attached appendix for instructions on how to create a bootable SD card). Or order part # TZT-OSA-SOF
- ✓ Download TZtouch software (complete OS + application).
- ✓ Detach all USB devices from the TZT9/14/BB and ensure all other MFD's are turned off before starting the update process.
- ✓ Copy all waypoints, routes, marks, and settings to an SD card. Not the same SD card you are using for the update. If you don't have an extra SD card, you can save this information to the chart card in the left SD slot.

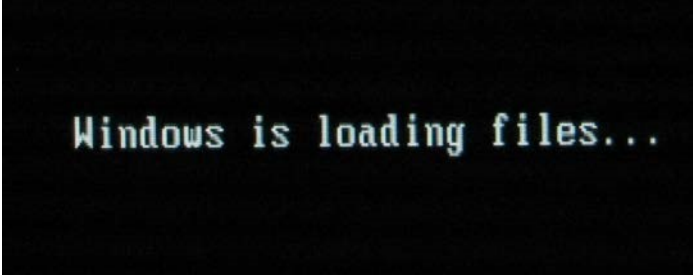
2. Instructions

1. Download the software from the Furuno website to a folder on your desktop.
2. Unzip the file.
3. Copy all the files to the bootable SD card. If you open the SD card on your computer, it should have the similar files and look like the screen below (software version file .wim, may be different). (note "System volume Information" may show on the computer you are using).




boot	7/12/2019 7:29 AM	File folder	
dd-0.5	7/12/2019 7:28 AM	File folder	
EFI	7/12/2019 7:28 AM	File folder	
PlgScn	7/12/2019 7:28 AM	File folder	
sources	7/12/2019 7:28 AM	File folder	
1950131_0602.wim	7/12/2019 7:28 AM	WIM File	2,114,148 KB
bootmgr	7/12/2019 7:28 AM	File	375 KB
DDIUpdate.bat	7/12/2019 7:28 AM	Windows Batch File	1 KB
FormatC.txt	7/12/2019 7:28 AM	Text Document	1 KB
imagex.exe	7/12/2019 7:28 AM	Application	471 KB
Tap.exe	7/12/2019 7:28 AM	Application	29 KB

4. Insert the 4GB or higher (less than 64GB) bootable program SD card into the right chart card slot of the TZT9/14/BB.
5. Turn on the TZT. After 15 seconds you will see the screen below. When you see the screen below, "Windows is loading files", you know the software is loading. Now wait 10 minutes for the software to load and for the TZT9/14/BB to turn off.



Windows is loading files...

6. After approximately 10 minutes the TZT will turn off. Before it turns off, do not touch any buttons or remove the program SD card.
7. After waiting for the full 10 minutes and verifying that the TZT is off. Remove the program SD card and turn on the TZT. Failure to remove the SD card before powering on the unit will cause the TZT to again reload the software from the SD card. If you do this, wait another 10 minutes for the software to reload. Do not pull the SD card out while the TZT is powered on.
8. After powering on the TZT you will see the screen below after approximately 30 seconds. The TZT will restart twice and turn off automatically after 6 minutes. Wait the full 6 minutes. Do not touch any buttons during this time.



Setup is starting services

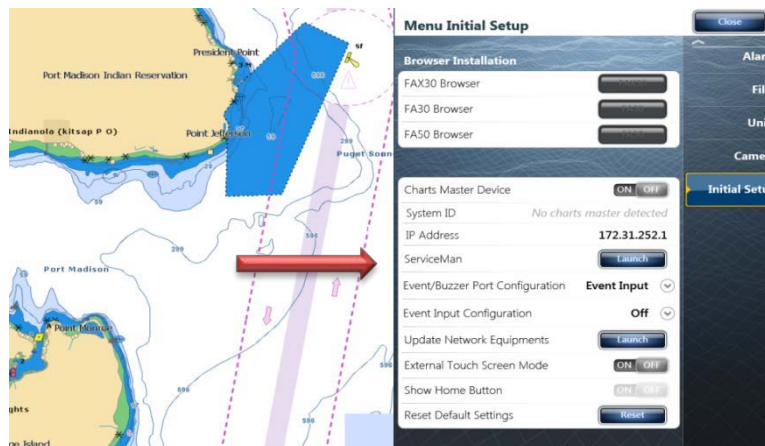
9. After waiting for the full 6 minutes and verifying that the TZT MFD is off. Turn on the TZT and confirm the correct software version.
10. Perform a master reset. Please refer to separate instructions located under the software tab for each MFD.
11. Reload saved waypoints, routes, and settings.

###END###

Scroll down for instructions on how to make a bootable SD TZT program card

How to make a bootable TZT program card using a TZT9/14/BB

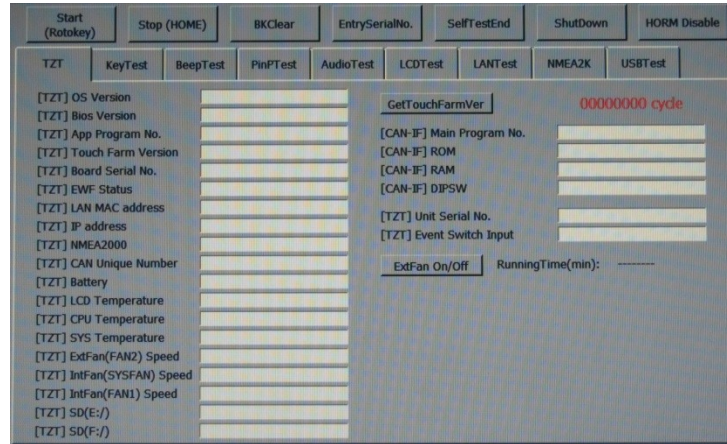
- A. You need a minimum of a 4GB SD card, but less than a 64GB card
- B. Use a new SD card or format it before use
- C. Place the new or clean formatted SD card into the right SD card slot of a TZT MFD with version 2.01 software or higher
- D. Press the home button, then select menu
- E. Scroll down to Initial Setup. Then scroll down toward the bottom of the menu and press the LAUNCH button next to ServiceMan



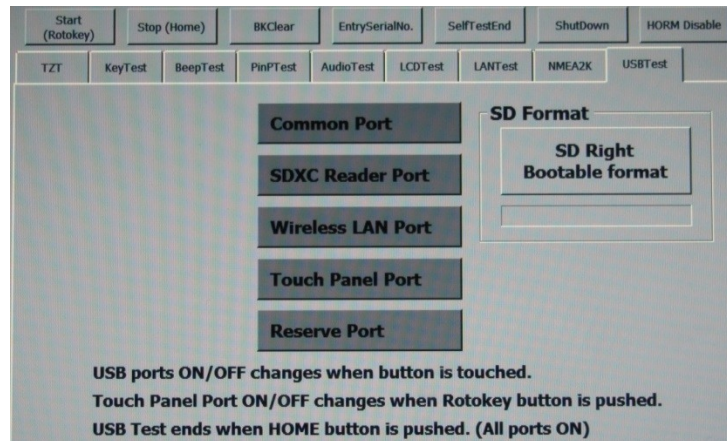
The following screen will pop up. Enter "Furuno Service", then press confirm



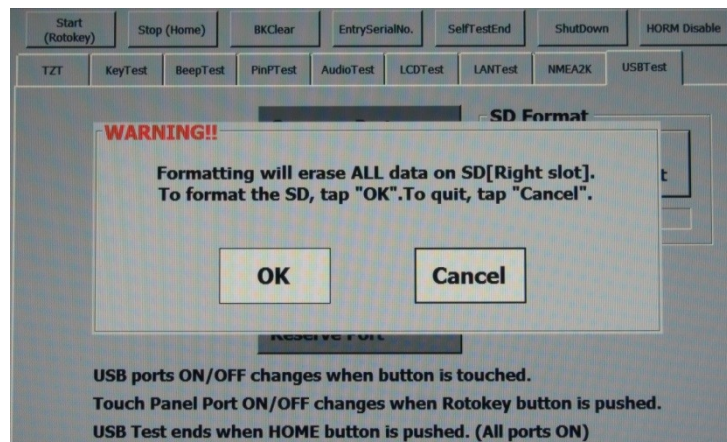
The following screen will pop up, press the USB test tab



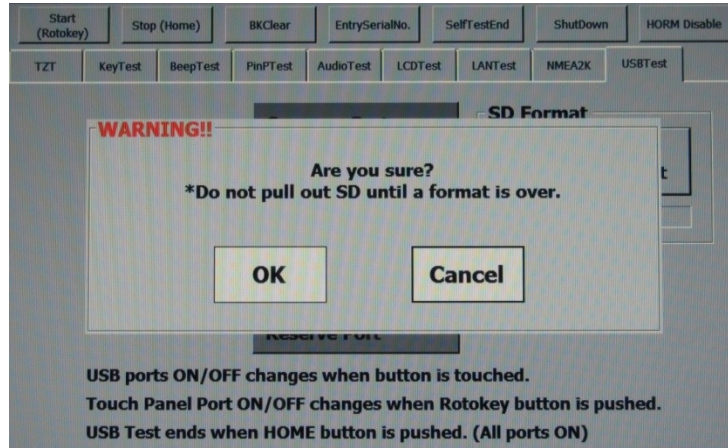
The following screen will pop up press "SD Right Bootable format"



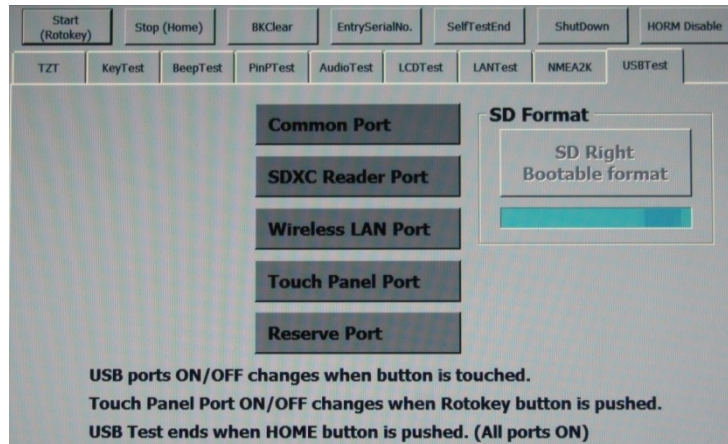
The following screen will pop up, press "OK"



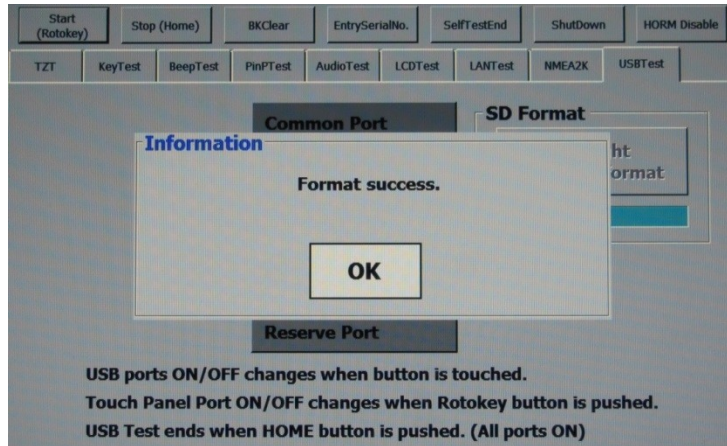
The following screen will pop up, press "OK" again



The following screen will pop up. The SD card is now being formatted.

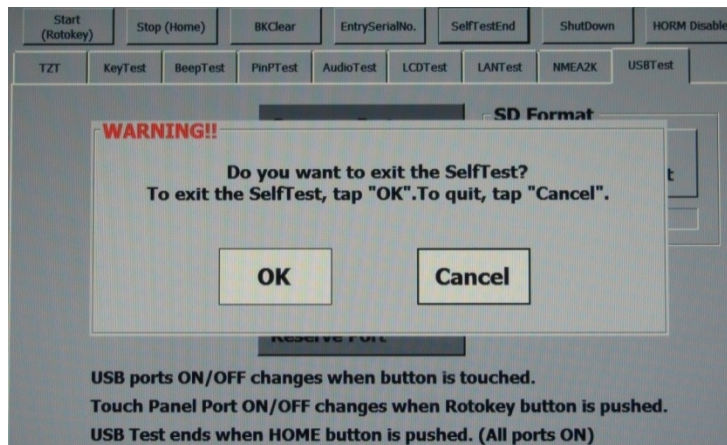


When the TZT has finished making the SD card bootable, the following screen will appear. Press OK.



Press OK, and then pop out the Bootable SD card that you just made.

You will get the following screen. You can now either push the OK button to exit the ServiceMan menu and return to the normal TZT screen, or you can press the ShutDown tab to turn the TZT off. If this is the TZT you are going to update, then turn it off.



Making the TZT bootable SD card is now finished.

Take the bootable SD card you just made and put it into your computer that has the TZT software on it. Now follow the software update instructions at the top of this document to copy the TZT software onto the bootable SD card and to update the TZT MFD.

END