

NAVnet
TZ2
touch

**TZTouch2 Update to
v6.26 - Procedures**

TZTL/TZT2BB v6.26 SOFTWARE UPDATE PROCEDURE

Required: you must have version v6.21 or newer before performing this software update. Please refer to the update instructions for version v6.21 if your displays currently have anything older.

Before performing the software update, it is recommended that you to save all valuable user data prior to updating the software. (such as; waypoints, routes, tracks and user settings) Instructions for saving user data can be found in chapter 8 of the Operator's Manual, chapter 6 of the on-board eGuide, and in the NavNet TZtouch2 Exporting and Importing Points, Routes, Tracks, and Settings document found in the manual's sections of this product.

This update should be done with any additional MFDs turned off.

1. Download the update software from the Furuno website to a folder on your desktop.
2. Once you download the Zip file from the Furuno USA website the result will look like the picture below



When you open folder, it contains the following App (application). You will see the contents below.

Name

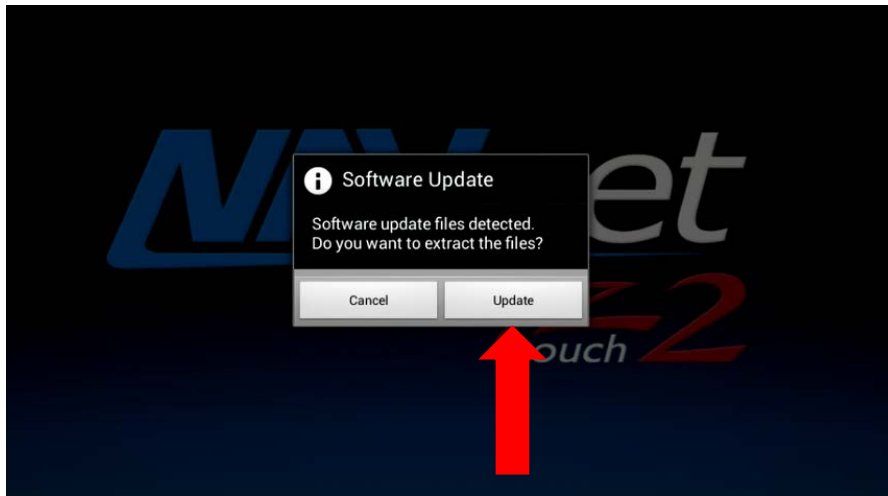
- IDCODE.SYS
- QB_FORCE_EXIT
- UPDATEBB.BIN

3. Copy these files to the root directory of a formatted (not to exceed 32GB) USB jump drive. There should be nothing else on the USB jump drive that you are transferring these files to.
4. Insert the USB jump drive containing the App upgrade into the USB port (pigtail) of the TZTL (*USB 1 for TZT2BB units*).

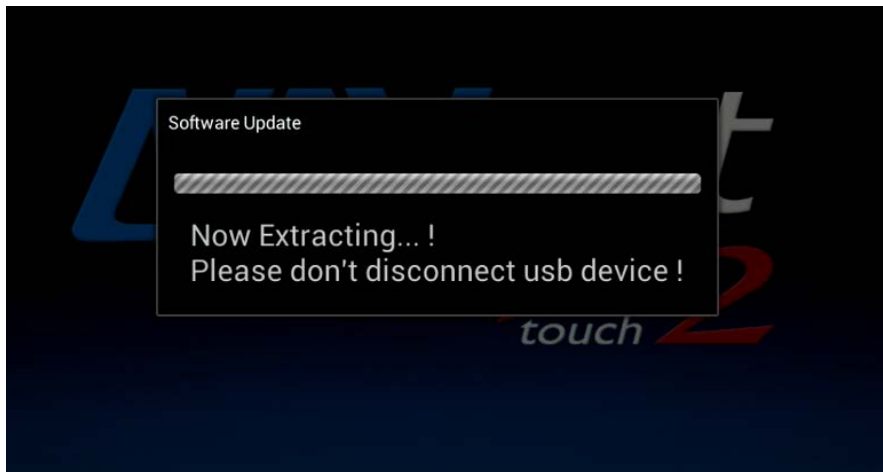


5. Turn ON the TZTL/TZT2BB being programed. *(Press and release power key.)*

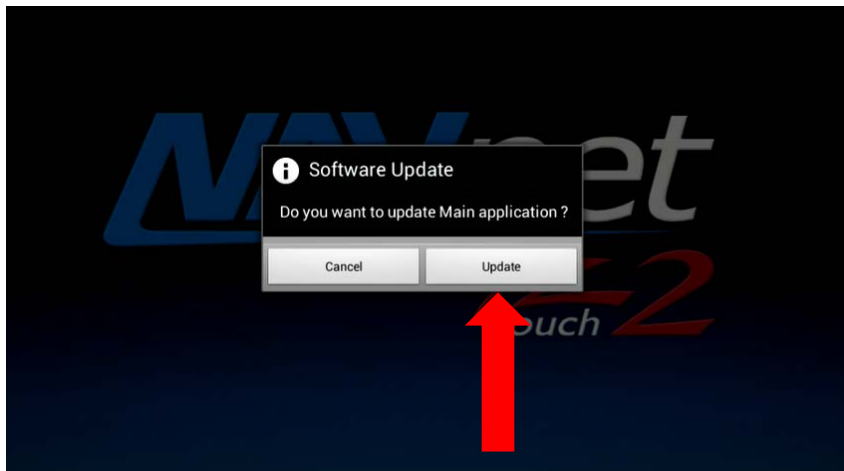
Message will appear *(As shown below)*



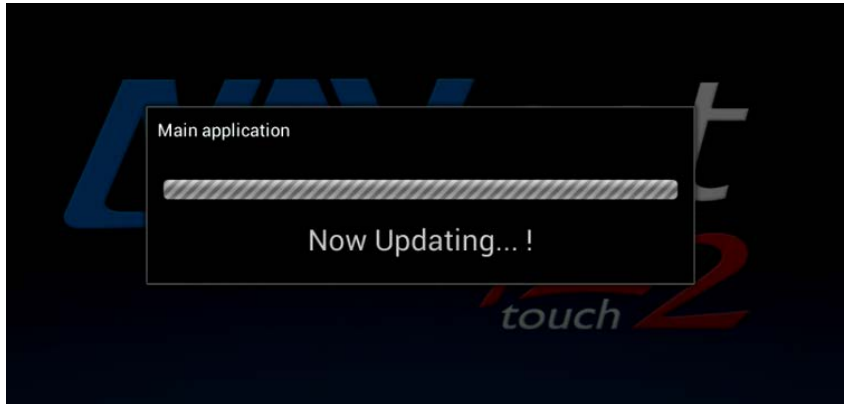
Select "Update" then wait. A Progress bar will appear *(As shown below)*



Next, the update Main application window will appear, select "Update"



The second progress bar will appear (As shown below)



If upgrading a TZT2BB unit, skip to step 8.

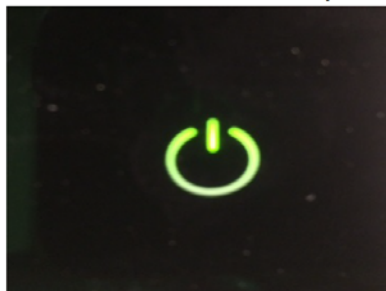
[FOR TZTL UNITS] After updating the Main application completes, a confirmation window will appear. (As shown below)



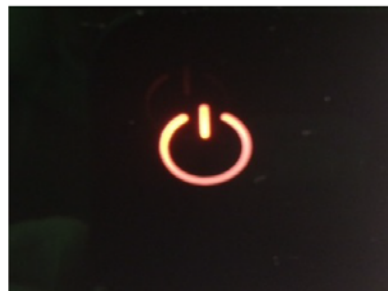
[FOR TZTL UNITS] The yellow progress bar along the bottom will travel across the screen. When it gets to the righthand side, the screen will go dark. At this stage, the power key is GREEN. This indicates that the TZTL is still conducting the update process.

Do not turn the power off

After approximately 4 minutes, the unit shuts completely down. This is indicated when the power key turns from GREEN to ORANGE.



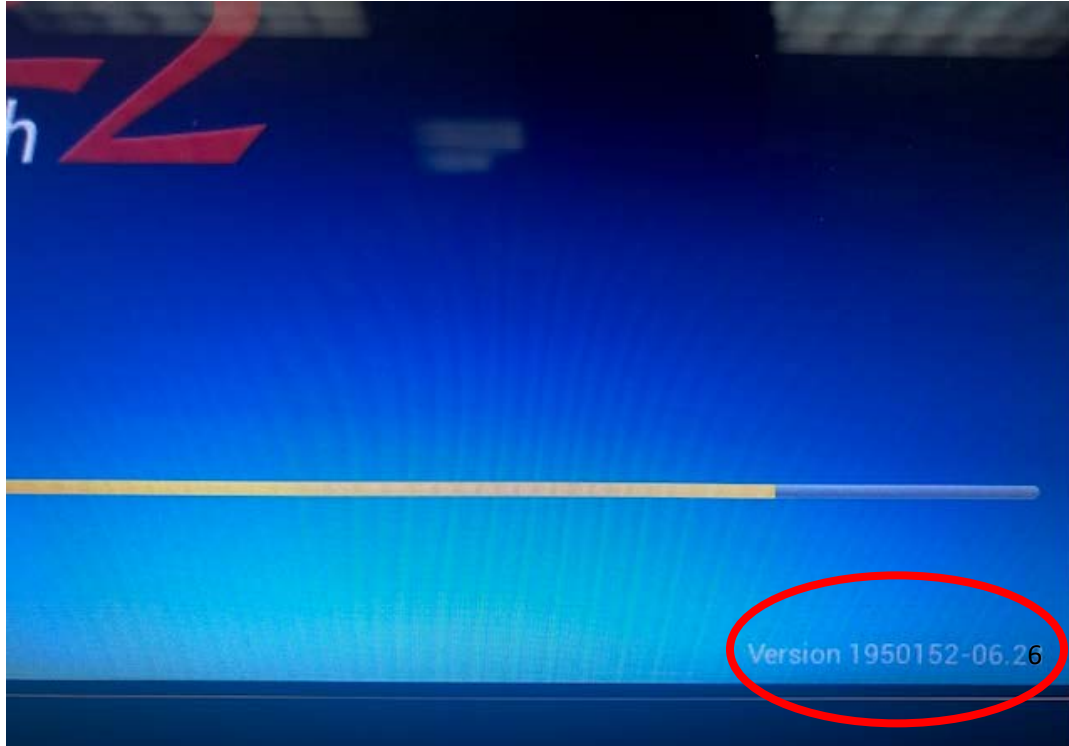
MFD ON



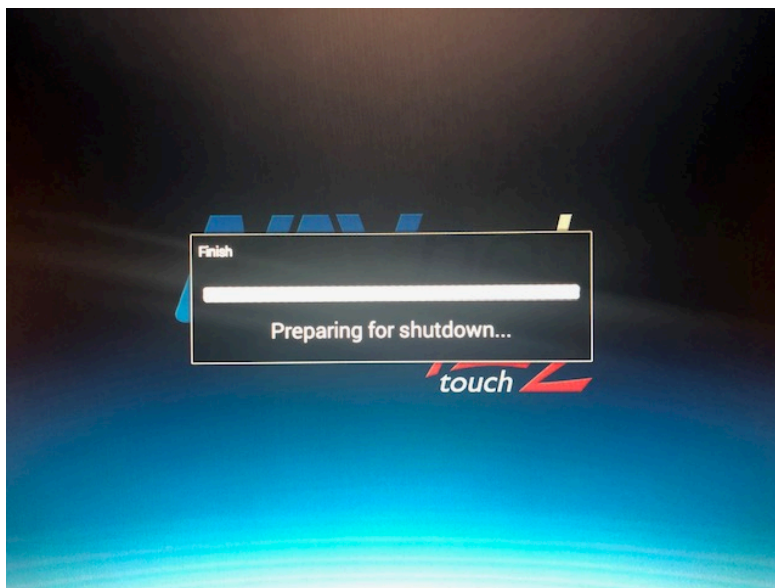
MFD OFF

6. [FOR TZTL UNITS] After the MFD powers down (ORANGE) for the TZTL units, remove the jump drive from the USB port.

7. [FOR TZTL UNITS] Turn the power on and confirm that the version indication on the startup window is correct. (UPGRADE is COMPLETE)



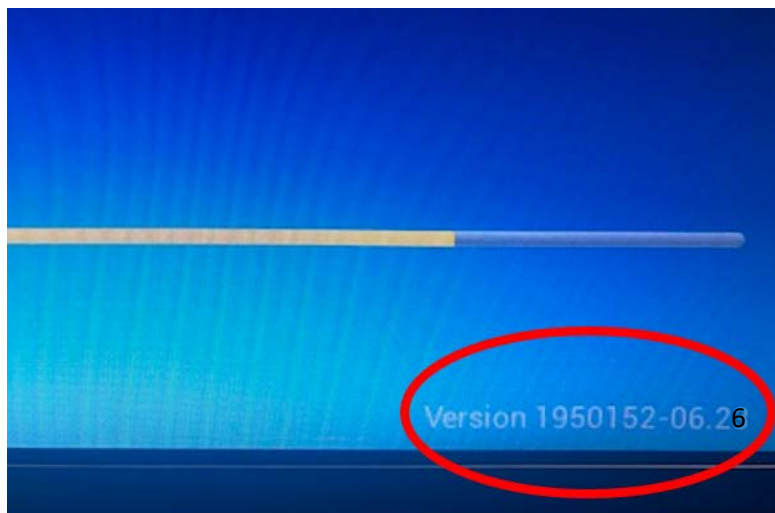
8. [FOR TZT2BB UNITS] Message will appear (As shown below)



9. [FOR TZT2BB UNITS] When the message below appears (*As shown below*); REMOVE USB Drive.



10. [FOR TZT2BB UNITS] Unit will automatically reboot. Confirm that the version indication on the startup window is correct. (*as shown below*)



11. [FOR TZT2BB UNITS] Repeat steps for TZTBB again for second display processor.

12. Upgrade process complete. Restore any necessary user files and settings.