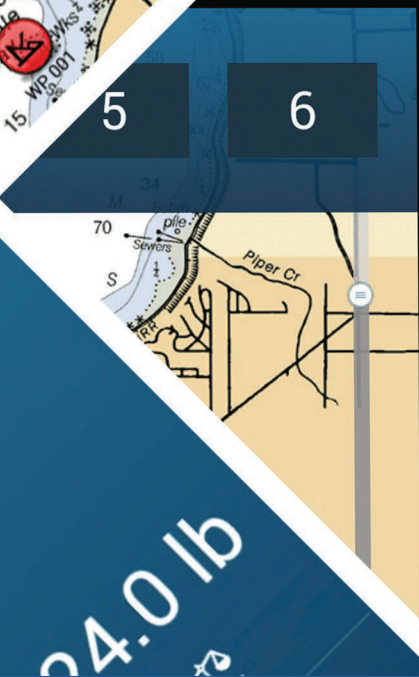
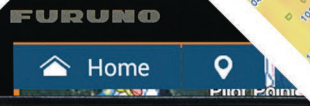
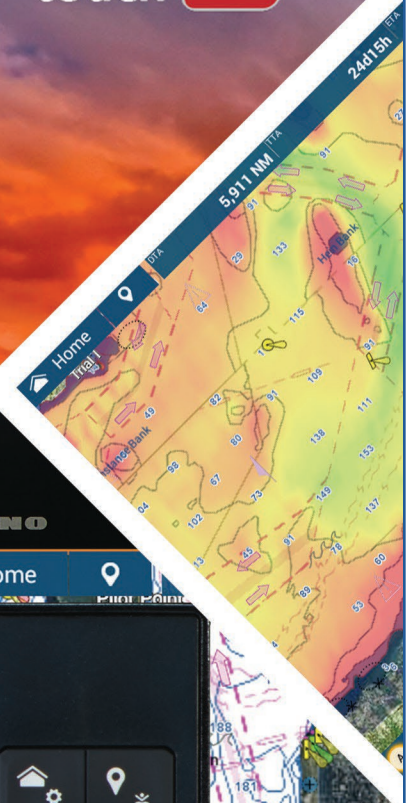


Software History

NAVnet

TZ3 touch



24.0 lb

FURUNO

TZtouch3 Software History

V3.80.1 (July 2025) Available by Wi-Fi for v3 or higher customers

- Improved: Internal fish finder software modified to have TVG functionality work better.

V3.80 (March 2025) Available by Wi-Fi for v3 or higher customers

- New: When a TZT10X/13X/16X built-in Fish Finder is connected to a TZtouch3 MFD or TZZ2BB, the new Airmar transducers (SS175L, SS175M, SS175H, SS175HW, M265LH, M265LM, M285HW, and TM260) supported by TZT10X/13X/16X V25.11 can be configured on the TZZ9F/12F/16F/19F and TZZ2BB. Note that the built-in Fish Finders of TZZ9F/12F/16F/19F and TZZ2BB do NOT support physically connecting these transducers.
- New: When the TZZ10X/13X/16X built-in CHIRP Side Scan is networked, Auto Gain can be set up on the TZZ9F/12F/16F/19F and TZZ2BB screens. Note that the TZZ12F/16F/19F built-in CHIRP Side Scan does NOT support Auto Gain.
- Improvement: Picture advance of the TZZ12F/16F/19F with a DI-FFAMP connected is improved. Previously, picture advance on a Fish Finder screen would sometimes briefly stop when the TZZ12F/16F/19F with DI-FFAMP was used.
- Improvement: Performance is stabilized while showing the Tide graph in the Data Box. Previously, the display could sometimes become unstable while showing the Tide graph in the Data Box.
- Improvement: Visibility of tracks under Night and Dusk modes is improved.
- Improvement: When connecting to the FLIR M400, prevents the screen from periodically going dark.

V3.70.1 (July 2024) Available by Wi-Fi for v3 or higher customers

- Fixed: Corrected false "fan speed alarm" for TZZ3 with side-scan connected
- Improved: TZZ3 internal sounder will work Manual CHIRP in Single Freq LF mode
- Improved: Auto CHIRP available at more range scales like FCV600/FCV800

V3.70 (June 2024) Available by Wi-Fi for v3 or higher customers

- Improved: New internal sounder Auto Gain
- New: Compatibility with B175MW, SS175MW and TM185MW
- New: Mixing with TZtouch XL series allowed
- Improvement: New partners added to HTML5 browser capability
- Change: Service Menu no longer requires password
- Change: [Complete System Wipe] removed from Reset Menu

- Change: NMEA 0183 TTM sentence is not output when the MFDs are networked with TZtouch XL series using Full Auto Tracking with DRS2D/4D/6A/25A-NXT
- Change: NMEA 2000 devices with smaller device instance are now prioritized.

V3.56 (January 2024) Available by Wi-Fi for v3 or higher customers

Minor update to allow larger font sizes and support of new MCU006 controller.

- Improved: Fonts now can be made larger
- New: MCU006 controller support
- Fix: EBL software bug
- Updated: Marine Zone Forecast- zones updated
- Fixed: MCU004 will now allow default selection to be other than one plugged into
- Fixed: Event Button extra touch no longer required
- Fixed: SST source not giving expected results on some large systems
- Improved: PBG and system memory management
- Improved: Can display up to 6 engines (previously 4)

V3.5 (October 2022) Available by Wi-Fi for v3 or higher customers

Including Follow-It, Improved Slide up menu, Improved Tracks, additional DFF3-UHD features and other features and improvements.

- New: Follow-It feature using DFF3D generated bathy lines
- New: Solid Black background for Instrument display pages
- New: Selectable Furuno name in addition to the standard Home button
- Improved: Slide up menus
- Improved: Tracks
- Improved: available smaller Points size and default setting
- Improved: Brighter AIS colors for nighttime mode
- Improved: Connectivity with FLIR M300C video over Ethernet • Improved: Features for DFF3-UHD Tru-Echo CHIRP Fish Finder
- Added: Support for 225T-TM904 CHIRP Side Scan Transom Mount Transducer
- Added: Support for TM185MW. A new Airmar ultra-wide medium frequency transducer

V3.01 (June 2022)

Including CHIRP Side Scan, PBG spot soundings and PBG sync with DFF3D, New Sunlight color and Color range expansion functions for Fish Finder, larger font for Route bar, and other features and improvements.

Brand New Features

- New: CHIRP Side Scan
- New: PBG Spot soundings (with DFF3D)
- New: PBG Sync (with DFF3D)

- New: Automatic download of NavCenter weather on power up
- New: ARPA Target Nick Names New: Trim Tab information for Data box and Instrument pages
- New: Second function (programmable) for Event button
- New: Fish Finder color range expansion
- New: Trim Tab display for Data box and Instrument pages
- New: FLIR M300C video images can be shown via Ethernet

Plotter

- Improved: Position entry edit and find
- Improved: Event button, second function added by long tap (press)
- Improved: Larger Route Bar font

Radar

- New: Channel mode added as a selection for Auto mode (DRS software required as well)
- New: ARPA Target nickname
- Improved: Name of Advanced Auto mode changed to Adaptive

Fish Finder

- New: Color range expansion
- New: PBG Start/Stop Sync (DFF3D)
- New: Spot Soundings (DFF3D)
- New: Sunlight color for Fish Finder and DFF3D
- Improved: Additional CHIRP transducers added
- Improved: Fish-It added to DFF3D screen
- Improved: PBG Speed Filter alarm

Others

- Improved: Fish Mapping function with SiriusXM receiver BBWX4 is improved: E.g., only available fish species are listed on the screen.
- Improved: Three (3) waypoints are output via PGN: 129285 for an active route. (Previously, only two (2) waypoints were output.)
- Fix: Login to My TIMEZERO account with Apple ID is fixed.

V2.05 (November 2021)

Fan speed alarm improved particularly after exiting Service Menu

V2.04 (July 2021)

Depth indication improved for internal sounder when DI amp is used with two single frequency transducers

V2.03 (June 2021)

Not for TZT9F units. Update for video capture chip production change.

V2.02 (April 2021)

Not released in production units. Polish language menu improved

V2.01 (March 2021)

Including new PBG with DFF3D, New Fish-It and Drift-It functions for fishing, FLIR M300 compatibility, updated Fish Finder functions including Marker Zoom, SiriusXM Fish Mapping with BBWX4, and many other features and improvements.

Brand New Features

- New: PBG support (with DFF3D)
- New: Sirius Fish Mapping (with BBWX4)
- New: Fish-It and Drift-It
- New: Sonar and video stream integration (Stream CSH8L/CH500/FCV1900 and others)
- New: FLIR M300 IP video compatibility
- New: Updated anchor watch alarm (TZ Ecosystem)
- New: Yamaha Helm Master EX Compatibility (TZT16F/19F only)
- New: Fleet tracking
- New: Customizable Startup Wallpaper

Plotter

- Improved: Plotter scale
- Improved: Position entry. Edit and Find functions added
- Improved: User Object grouping when sorted by date
- New: Show/Hide Accu-Fish on plotter screen
- New: Sub menu multi-selection for user objects
- New: Variable track color: Day of the week and Trip mode

Radar

- New: Source selection in radar layer
- Improved: Radar target improvements

Fish Finder

- New: Support for single frequency CHIRP transducers
- New: Preset frequencies for CHIRP transducers
- New: Marker Zoom
- New: Bottom Search mode on/off
- New: Bottom Lock/Zoom for Multi-sounder (DFF3D)
- New: Blue Background color for Fish Finder and DFF3D
- New: Zero Line rejection for mono-beam sounder
- Improved: Reorganizing sounder layer menu
- Improved: Depth scale improvements
- Improved: Fish Finder legend

Others

- Additional system connectivity
- Common UI elements synchronization
- Hardware key & MCU operation improvements

- Automatic over the air update via WIFI
- New dual tap gesture
- Default settings changes
- AIS improvements
- Screenshot improvements
- Added: Third Party Devices via HTML5 (SeaKeeper, HP Water maker, Omnisense, OSCAR)

V1.08 (August 2020)

- New: Controlling Third Party Devices via HTML along with preloaded browser files
- New: When registering Catch details, depth information is included as an option
- Improved: Default gain setting in Auto Mode of built-in Fish Finder is improved in order to show stronger echoes at deep water like over 200 m compared to previous versions.
- Improved: The TVG graph is changed to start applying from 1 m (previous: 10 m). It works effectively to suppress the surface layer at shallow water and show echoes.
- Improved: Guard Zone settings are properly stored and updated on the screen.
- Improved: When editing an active route, edited content is immediately reflected to other displays in the network.
- Improved: When an external monitor is connected via HDMI and USB for touch control, a pin code can be entered at startup and catch log details can be entered.
- Improved: Issue on importing setting data from TZTL12F/15F/2BB v6.xx is fixed.
- Improved: Heaving correction works with the DI-FFAMP. (No update of DI-FFAMP required)
- Improved: Picture advance with DI-FFAMP is stabilized, no intermittent echo advance.
- Fix: Transducer draft values are properly output to external devices.
- Fix: Login status of My TimeZero account is maintained after recycling the power.
- Fix: Screenshots are properly taken while video images are input to the HDMI IN port.
- Fix: When turning on the TZT12F with an external monitor connected, the screen properly starts up.
- Fix: Fan rotation alarm of TZT2BB is properly generated.

V1.07 (April 2020 Initial release)