

SOFTWARE UPDATE PROCEDURE TZT9F/TZT12F/TZT16F/TZT19F/ TZT2BB/TZT10X/TZT13X/TZT16X/ TZT22X/TZT24X/TZTBBX

This document provides the procedures for updating the software for the TZT9F/TZT12F/TZT16F/TZT19F/TZT2BB/TZT10X/TZT13X/TZT16X/TZT22X/TZT24X/TZTBBX.

Note 1: Save all important user data such as points, routes, and setting in advance. Refer to the Operator's Manual (OME-45120/OME-44870/OME-45240) or the eGuide for how to save user data.

Note 2: Software updates must be done during anchoring.

Summary

Software updates can be done by the following two procedures.

- Download the update files to a USB flash memory.
- Update the software via wireless LAN.

Note: This document provides the procedure for updating the software by using a USB flash memory. Refer to the Operator's Manual (OME-45120/OME-44870/OME-45240) for how to update the software via wireless LAN.

Software update procedure

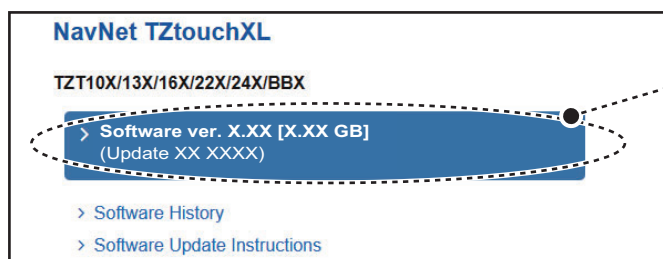
The update takes about 20 minutes. If multiple units* are connected on the same network, the update files will be shared via the network and the other units will be updated simultaneously.

*: Available only with the units from the same series. (Series Divisions: TZT2BB/NavNet TZtouch3/NavNet TZtouchXL)

Notice

- Format a USB flash memory used for the software update in FAT32. If you use a USB flash memory with a capacity over 32 GB, format in exFAT.
 - Disconnect all USB devices from the device before updating the software.
 - Do not remove the USB flash memory while updating the software. Data may be corrupted.
1. Go to the website (<https://v1.furunosoftware.com>) and check the version and the update date to make sure you have the latest software (see the figure below).

Note: The figure below is a display example for the NavNet TZtouchXL.



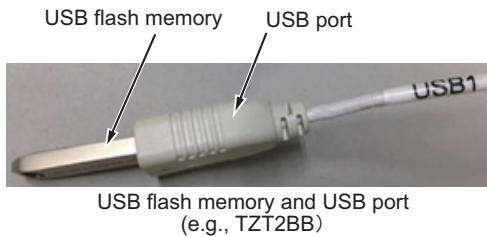
Check the version
and the update date

2. Download and unzip the update files to your PC.
3. Connect the USB flash memory to the PC.



- Copy the downloaded update files directly to the USB flash memory.
- Note:** Copy only the update files to the USB flash memory and do not store any other files.
- Disconnect the USB flash memory from the PC.
- Turn off the power to the unit and insert the USB flash memory with the update files into the USB port on the back of the unit.

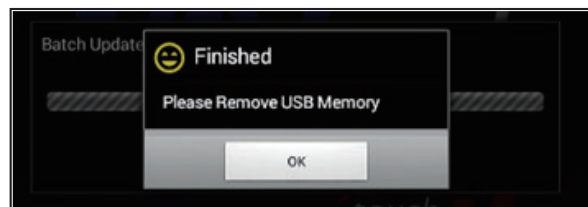
For TZT9F/12F/16F/19F/TZT2BB, insert the USB memory into the composite connector.



Model	Connector Location	Port
TZT2BB	Composite connector	USB1
TZT9F/12F		USB
TZT16F/19F		USB1
TZT10X/13X/16X/22X/24X/BBX	Back of the unit	USB

- Turn on the unit.

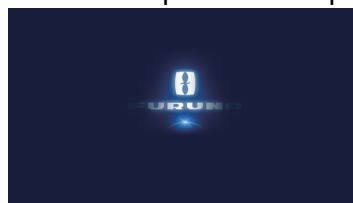
When the power is turned on, the unit starts extracting the update files automatically. After the extraction of the update files, the message shown in the figure below appears on the screen.



- Remove the USB flash memory.

After removing the USB flash memory, the unit automatically starts the update process and restarts several times.

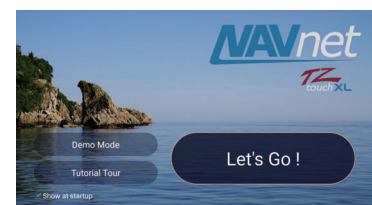
Note: Do not turn off the power until the update is completed.



Screen display during the update process
(Example: NavNet TZtouchXL)

After the update process is completed, the unit will be in the following state:

- Except TZT2BB: The normal startup screen will be displayed. If a password has been set, enter the password to show the startup screen.
- TZT2BB: The unit will be powered off, so turn it on again manually.



Screen display after completing the software update
(Example: NavNet TZtouchXL)

9. Open the [Quick Self Test] screen to check the software version, then turn off the power.

- TZT10X/13X/16X/22X/24X/TZTBX:

[Settings]→[Initial Settings]→[Service/Self Test/Log]→[Quick Self Test]

- Other units:

[Settings]→[Initial Settings]→[Quick Self Test]



The screenshot shows the 'Quick Self Test' screen with a dark background and white text. The screen is titled 'Quick Self Test' at the top. Below the title, there is a section labeled 'OWNSHIP'. The screen displays a list of system information items with their corresponding values. The 'App Version' value, '1950248-25-20.03', is circled in red. A dashed arrow points from the text 'Check that the software version is the latest.' to the circled value.

Item	Value
First Boot Version	1950246-25.21
System Version	1950247-25.21
App Version	1950248-25-20.03
MAC address	DC-CD-74-06-EE-23
IP address	172.31.252.53
WLAN MAC	B4-8C-9D-0D-83-A1
CAN Unique Number	-
System Information 1	129
System Information 2	108

Check that the software version is the latest.