

## How to update equipment using the network sensor software via the TZtouch/TZtouch2/TZtouch3

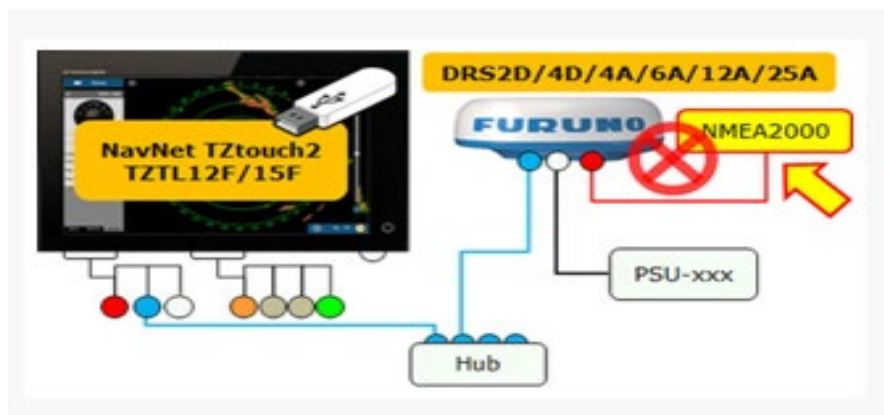
The network sensor software is an update tool used to update select network and/or NMEA2000 sensors through the NavNet TZtouch (TZT9/14/BB v5.01 or later) or TZtouch2 (TZTL12F/15F/2BB v4.01 or later) or any version TZT3 MFDs.

### 1. Preparation

- Windows OS Computer to download file and USB stick/SD card.
  - TZT9/14/BB – SD card or USB Memory
  - TZTL12F/15F/2BB/TZT9F/TZT12F/TZT16F/TZT19F - USB Memory

### Note on NavNet TZTL12F/L15F/2BB

Sensors such as SC-30 connected to the Furuno CANbus terminal of DRS2D/4D (dome) and DRS4A/6A/12A/25A (open array) **CANNOT** be updated via the Uploader.



The following screenshots and tables show how the Sensor Updates looks and what it offers. (Page 3 shows the key)

**TZTL12F/15F/2BB**

Time	Update	Product name	Update item	Current prog#	Prog# in Storage Device	Result
1 [min]	<input checked="" type="checkbox"/>	DFF1	main application	0252353-02.01:0252364-01.01	0252353-02.01	-
1 [min]	<input checked="" type="checkbox"/>	DFF1	Application	0252353-02.01:0252364-01.01	0252353-02.04.*	-
4 [min]	<input checked="" type="checkbox"/>	PG-700	Application	01.02:01.01	*:*.01.01	-
4 [min]	<input checked="" type="checkbox"/>	PG-700	Application	01.02:01.01	*:*.02.03	-

Version	9	Please push 'Start'	
Start	8	Scan	10
			Exit

**TZT9/14/BB**

Update	Product name	Update item	Current prog#	Prog# in Storage Device	Result
<input checked="" type="checkbox"/>	DFF1	main application	0252353-02.01:0252364-01.01	0252353-02.01	
<input checked="" type="checkbox"/>	DFF1	Application	0252353-02.01:0252364-01.01	0252353-02.04.*	
<input checked="" type="checkbox"/>	PG-700	Application	01.02:01.01	*:*.01.01	
<input checked="" type="checkbox"/>	WS-200	Application	1.009:1.039:1.001:1.032:000	*:1.039:*:1.039:a*	

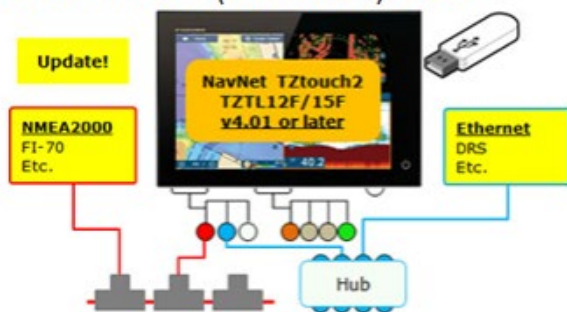
Version	9	Please click "START" with use of the cursor pad.		Time left :	14 [min]
Start	8	Scan	10	Exit	11

**Key**

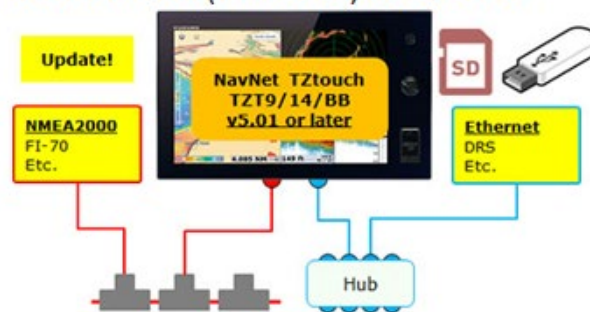
No	Item	Descriptions
1	Time	Shows expected time to update
2	Update	Selects the target product to be updated. If the program in the update USB memory or SD card is different from the version in the product, the update box is checked with [ ✓ ] by default.
3	Product name	Lists detected products in the network. Note that the product name will <b>NOT</b> appear if the update USB memory or SD card does <b>NOT</b> contain a program package for the target product.
4	Update item	Shows the item to be updated such as application
5	Current prog#	Shows the currently installed program version in the product
6	Prog# inStorage Device	Shows the program version in the update USB memory
7	Result	Shows the result of update [OK] or [NG]
8	Start	Starts the update process of selected product(s)
9	Version	Shows the version of Uploader
10	Scan	Scans available products in the NavNet TZtouch/TZtouch2 network
11	Exit	Closes the Uploader window

## Interconnection

NavNet TZtouch2 (TZTL12F/15F) via USB



NavNet TZtouch (TZT9/14/BB) via USB or SD



## Note:

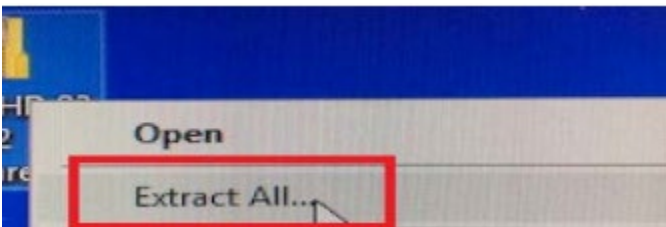
To update the DFF1 to the latest version via Sensor Update, the DFF1

version must be at v2.01 or later. When the DFF1 version is older, contact a FURUNO representative.

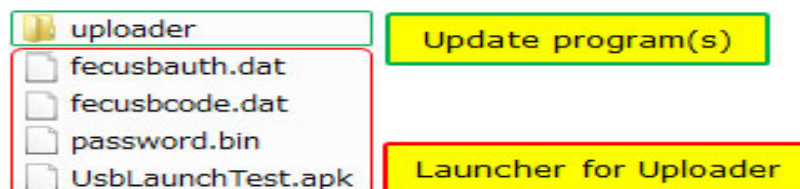
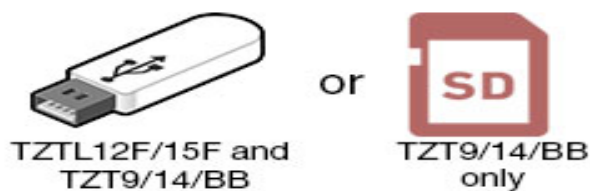
## 1. Procedures

1.2 - Download the file from Furuno USA website ([www.furunousa.com](http://www.furunousa.com)), under “View Support/Tech Info”, of the equipment model number.

1.3 - Unzip the zipped file onto the desktop of the PC, by right clicking on the downloaded folder and clicking “extract all”.



1.4 - Open the extracted file folder and you will see the files that need to be loaded onto the USB stick/SD card. Copy all the files to the root of the USB stick/SD card.



1.5 - Only one MFD should be turned on during the updating process. Make sure all other MFD's are turned off.



1.6 - A. TZTL12F/15F/2BB/TZT9F/TZT12F/TZT16F/TZT19F:  
Insert the USB memory to the pigtail USB port.

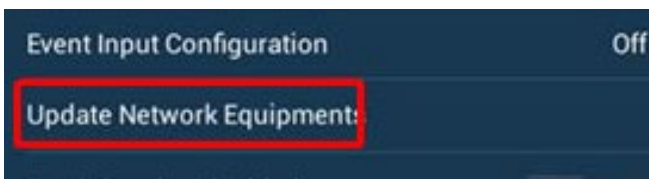
B. TZT9/14/BB:

Insert the memory to the rear USB port or the SD card to the front slot.

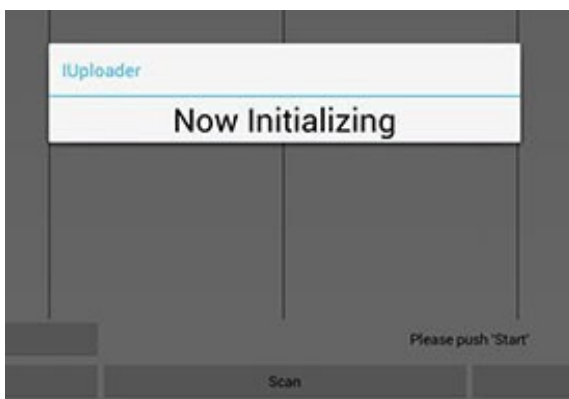
1.7 - Access [Settings] > [Menu] > [Initial Setup] > [Update Network Equipment].

TZTL12F/15F/2BB/TZT9F/TZT12F/TZT16F/TZT19F

TZT9/14/BB



1.8 - While the message [Now Initializing] appears, the TZT2/TZT3 or TZT9/14/BB is comparing the networked devices with available program files in the USB memory or SD card. The screen will change to the Sensor update (uploader) window.



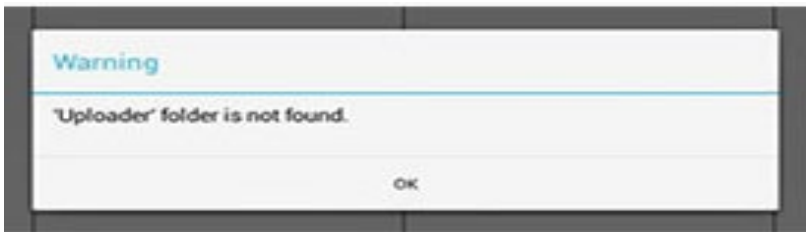
**1.9 - After the initializing of the software, the Uploader window will appear as the example below.**

Time)	Update	Product name	Update item	Current prog#	Prog# in Storage Device	Result
1 [min]	<input checked="" type="checkbox"/>	DFF1	main application	0252353-02.01:0252364-01.01	0252353-02.01	-
1 [min]	<input checked="" type="checkbox"/>	DFF1	Application	0252353-02.01:0252364-01.01	0252353-02.04.*	-
4 [min]	<input checked="" type="checkbox"/>	PG-700	Application	01.02:01.01	*.*.01.01	-
4 [min]	<input checked="" type="checkbox"/>	PG-700	Application	01.02:01.01	*.*.02.03	-

Version Please push 'Start'

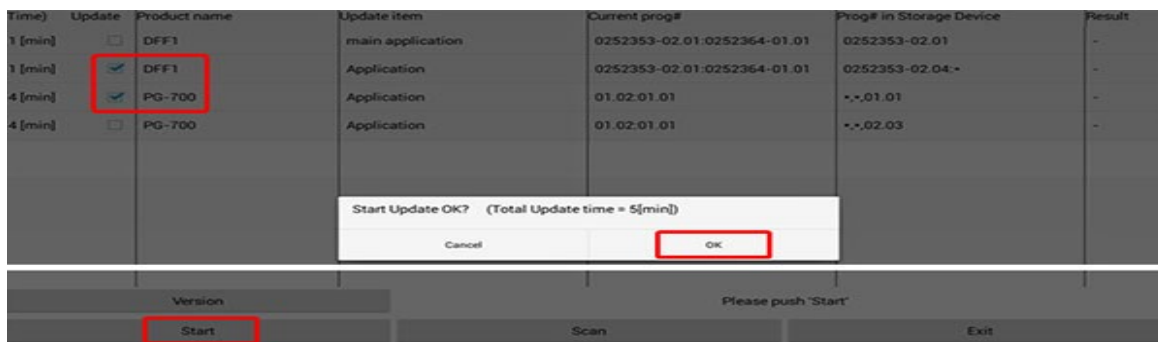
Start Scan Exit

**NOTE - If file was not loaded correctly, the following message will appear.**

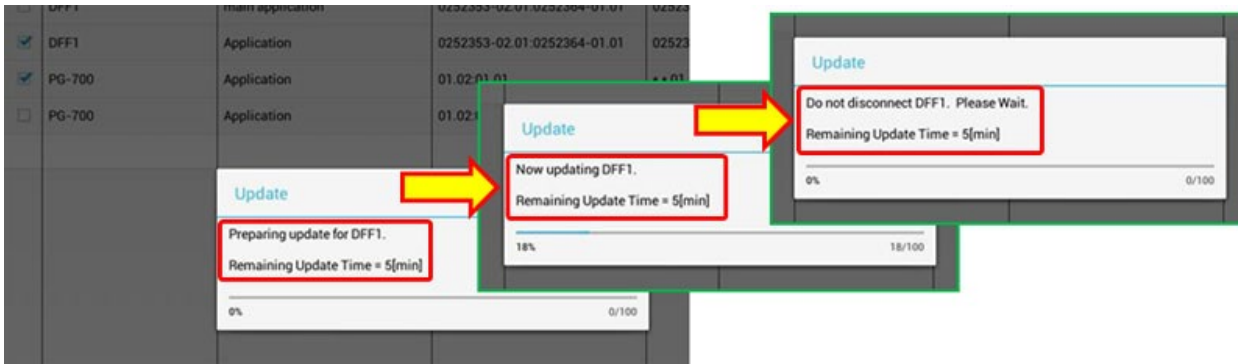


**1.10 - Select the product(s) to be updated and tap [Start]. Ensure any items not to be updated are NOT SELECTED.**

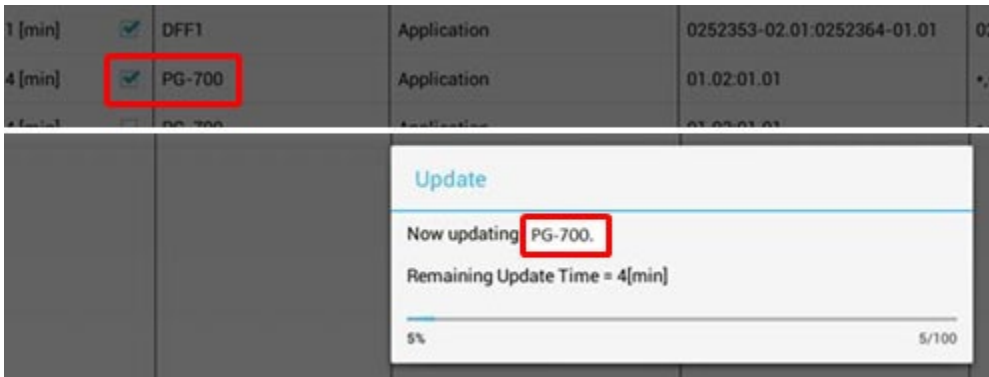
**After the message [Start Update OK? (Total Update time = xx [min])] appears, select [OK] to proceed.**



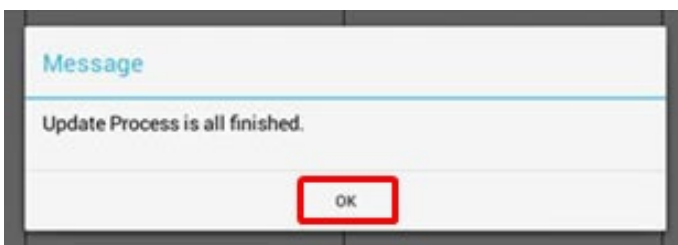
1.11 – The update will start. See that the progress bar grows during the update process.



1.12 - After the update of the first unit finishes, the next will automatically be updated. In the following example, the PG-700 is updated after the DFF1.



1.13 - After all the updates finish, the message [Update Process is all finished.]. Tap [OK] to finish. (Tzt2/Tzt3)



1.14 - Confirm that the result is shown as [OK] and that the program version in the update USB memory or SD card is shown in [Current prog#] for all the target units.

Time	Update	Product name	Update item	Current prog#	Prog# in Storage Device	Result
1 [min]	<input type="checkbox"/>	DFF1	main application	0252353-02.01.0252364-01.01	0252353-02.01	-
1 [min]	<input checked="" type="checkbox"/>	DFF1	Application	0252353-02.01.0252364-01.01	0252353-02.04.*	OK
4 [min]	<input checked="" type="checkbox"/>	PG-700	Application	01.02.01.01	*.*.01.01	OK
4 [min]	<input type="checkbox"/>	PG-700	Application	01.02.01.01	*.*.02.03	-

Application finish OK?

Cancel      OK

Version      Please push 'Start'

Start      Scan      Exit

To close the Uploader window, tap [Exit] and select [OK].

THE END