

**MAV**net

*TZ2*  
touch

**DFF1-UHD**

**Software Update Procedure**

# Preperation for DFF1-UHD Software update

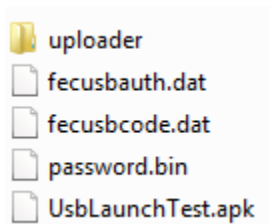
1. USB memory (Do not use SD to USB Adapter)



2. Download DFF1-UHD Software for the TZT2 from the Furuno USA website under the “Software” selection of the DFF1-UHD product.

3. Unzip DFF1-UHD Software

4. Move unzipped software contents to root of USB memory. Root of USB memory will contain the following only:



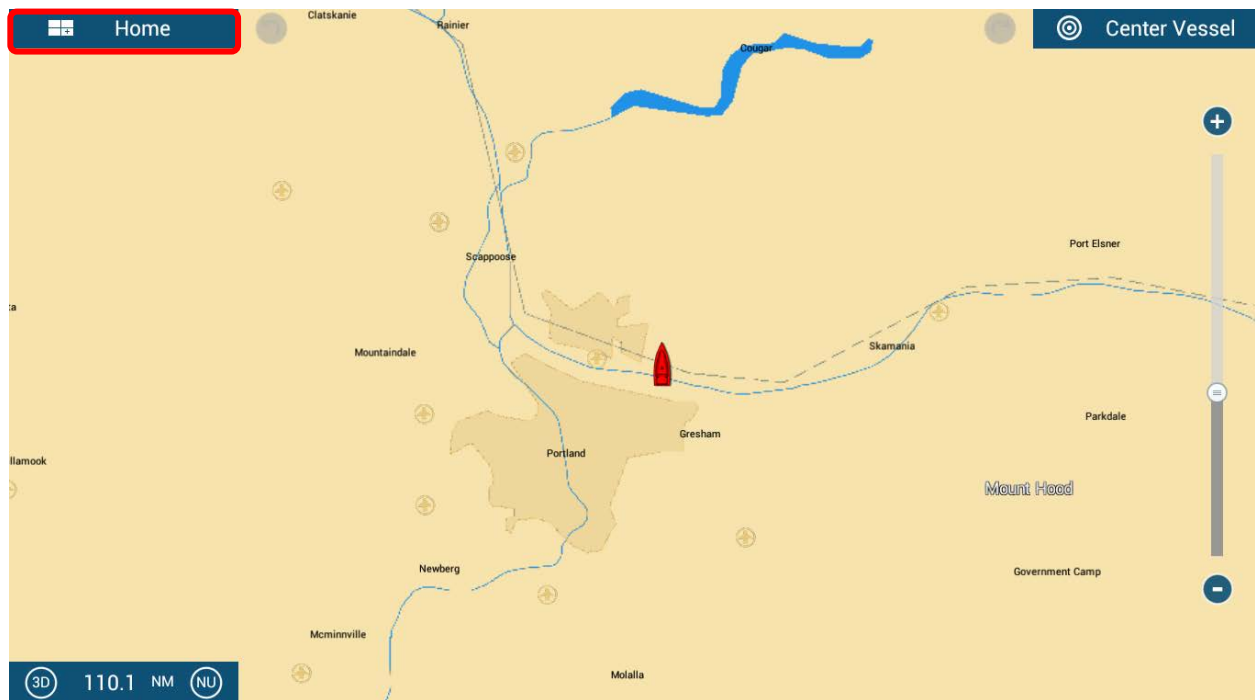
(Note: When you open your USB memory window, you should see only the files shown above. They should not be changed or placed inside any additional folders. Other software, photos, or files should NOT be on the USB along with this upgrade software)



5. With the power off to the MFD. Insert USB memory into the USB pigtail cable located on the back of the TZT2 MFD. This will be a white pigtail cable. Power on the TZT2 MFD and boot up normally.

You are now ready to begin the DFF1-UHD software update

### 1. Press Home Button



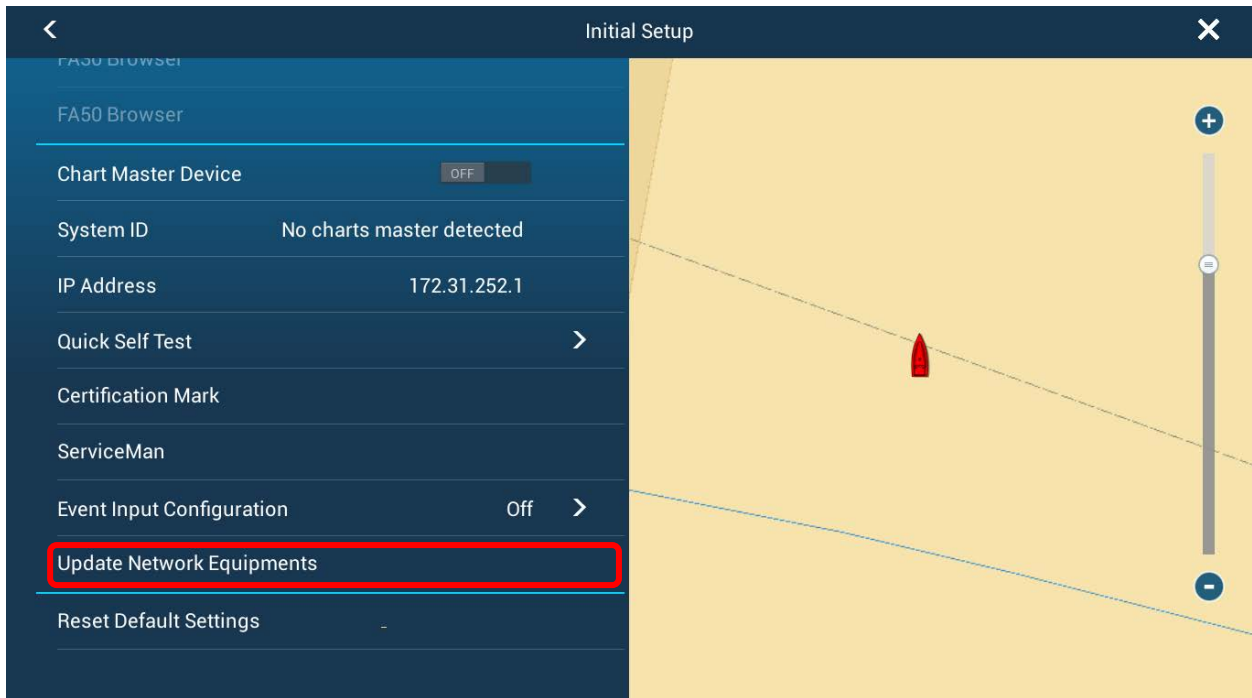
### 2. Press Settings



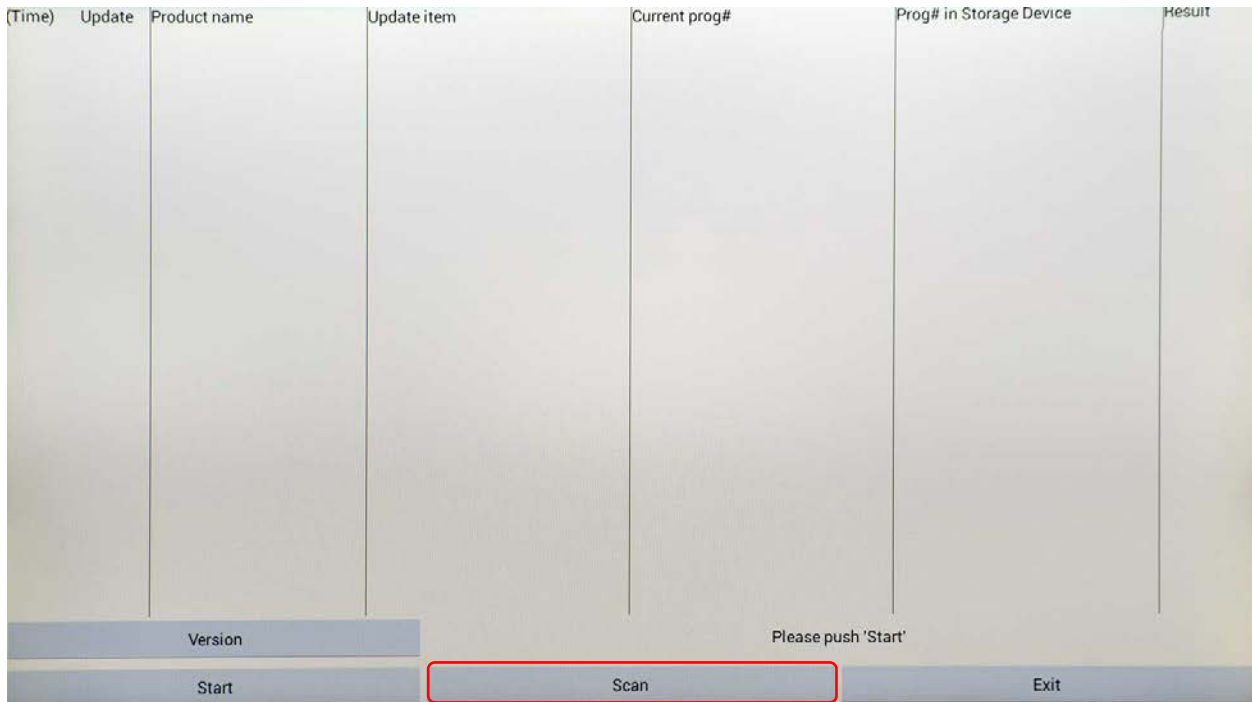
### 3. Press Initial Setup



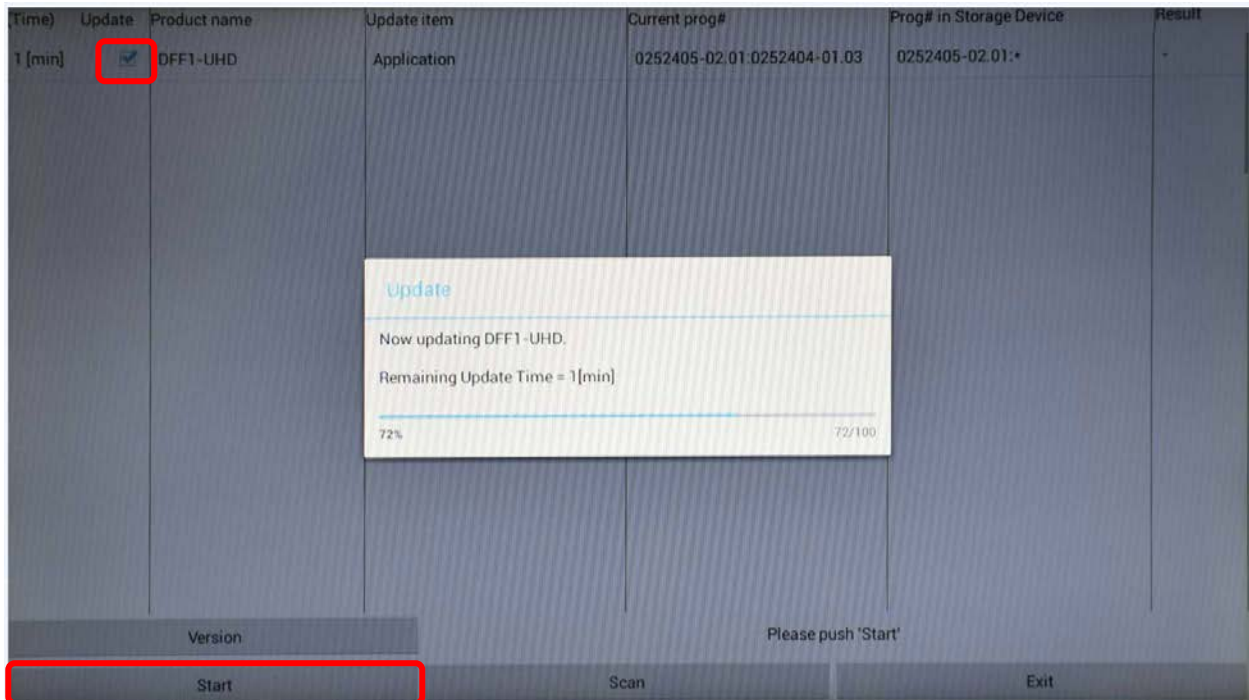
### 4. Press Update Network Equipment



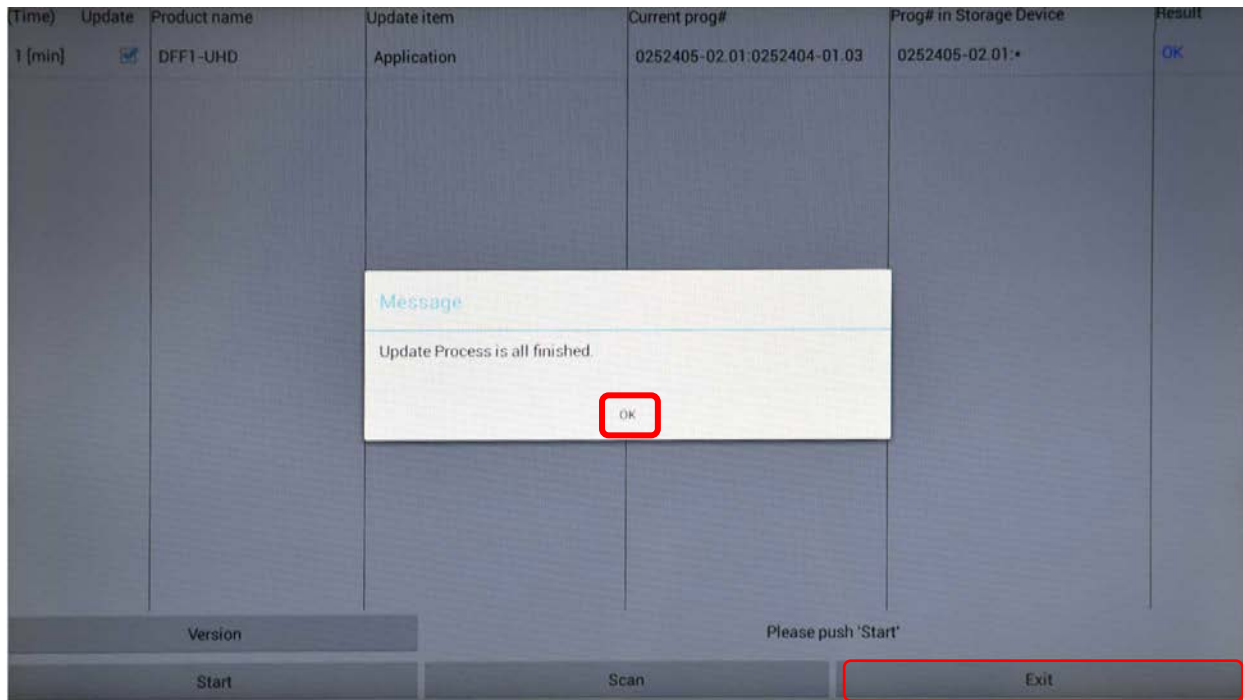
**5. If DFF1-UHD is not recognized Press Scan**



**6. Make sure the Update Box is checked for DFF1-UHD then press **Start** and acknowledge the update to begin the Update process.**



7. You will be notified once the update process is finished.  
Press **Ok** and then press **Exit**



The unit will reboot back to normal mode. You may now remove the USB memory.



# How to verify DFF1-UHD has been successfully updated.

1. Access the **Initial Setup** menu. Press **Sensor List**



2. Verify that the updated software version is displayed.  
(v2.01 is shown in this example)

A screenshot of the 'Sensor List' application interface. It features a table with columns for Name, NickName, Version, IP, and HostName. The 'DFF1-UHD' entry is highlighted, and its version '02.01' is circled in red. A 'Reset' button is visible in the top right corner.

NETWORK SENSOR				
Name	NickName	Version	IP	HostName
TZTL15F (Me)	TZTL15F	05.01:05.01:05.03:	172.031.252.001	MF252001
DFF1-UHD	DFF1-UHD	0252405 <b>02.01</b> :0252404...	172.031.092.002	ES092002