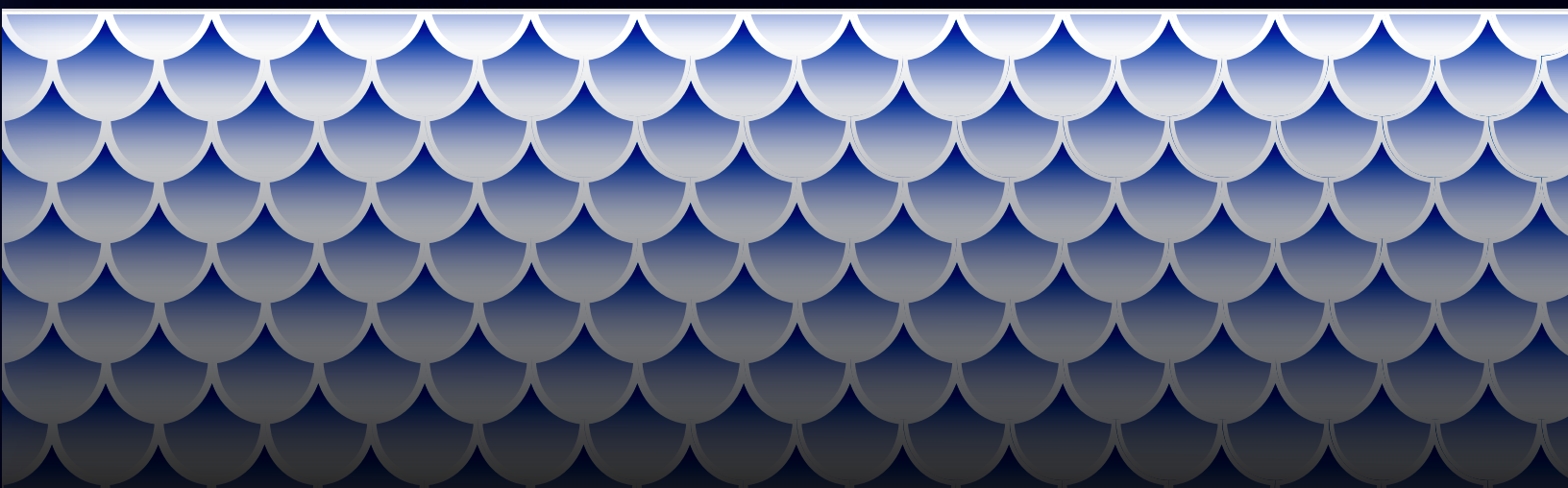




FURUNO

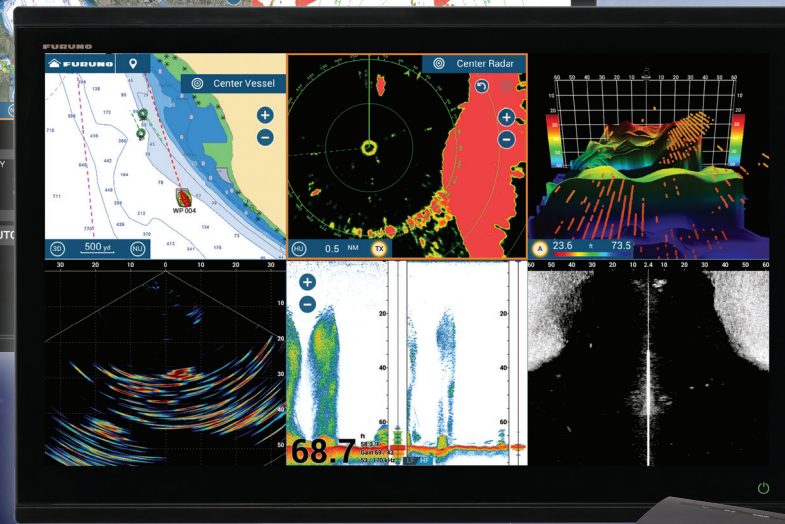
When You're Serious About Sportfishing





9" - 12" - 16" - 19" / 22" - 24"
TZT9F - TZT12F - TZT16F - TZT19F / TZT22X - TZT24X

THE ULTIMATE FISHING ARSENAL

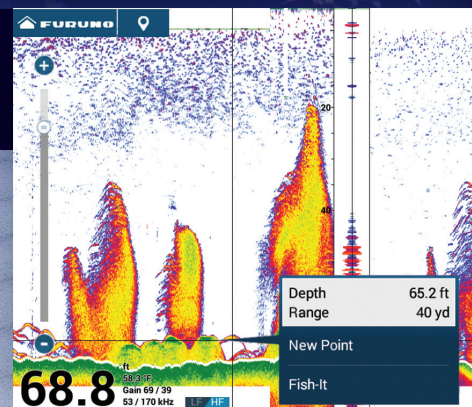


DFF3D
Multibeam Sonar

DFF3-UHD
High-Power TruEcho CHIRP™

TruEcho CHIRP™ FISH FINDER

Designed to operate over a wide range of frequencies utilizing 1, 2, & 3 kW transducers to deliver significant advancements in signal clarity and target definition.

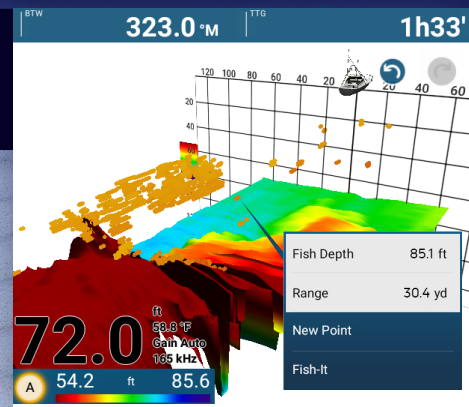


- ▶ Display single or dual frequency Fish Finder images simultaneously on the screen
- ▶ Locate a target on the display, and with one tap, access the **Fish-It & Drift-It** feature to get on the fishing hotspot
- ▶ Use Post Processing Gain Control to quickly change gain on both new & past echoes

* Internal Fish Finders are not included in TZT22X & TZT24X

3D MULTIBEAM SONAR

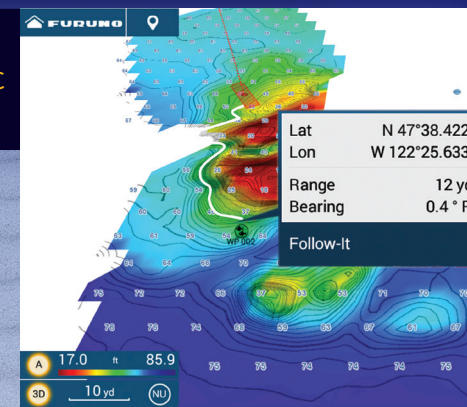
Utilize your MFD as a Multibeam Sonar by adding the DFF3D. Visualize the underwater surroundings of your vessel and pinpoint the fish.



- ▶ Visualize the seafloor in stunning 3D
- ▶ Access **Fish-It & Drift-It** with one tap
- ▶ Better understanding of fish target depths with Triple Beam display
- ▶ Instantly see distribution of bait fish, predator fish, and water column conditions with Cross Section display

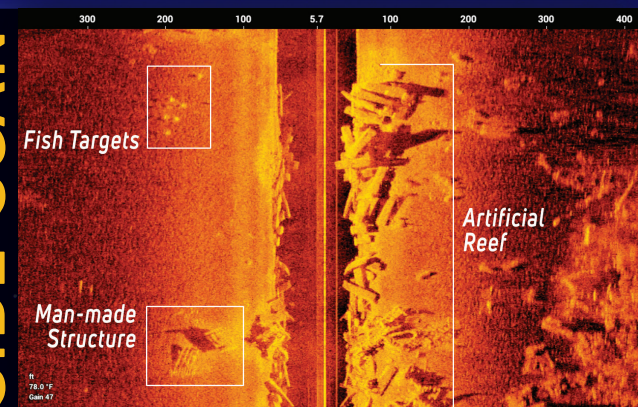
PBG PERSONAL BATHYMETRIC GENERATOR

Map the seafloor by creating your own shaded relief charts and leverage your PBG data like never before.



- ▶ Auto-navigate contour lines with **Follow-It**
- ▶ Build your own realistic 3D charts
- ▶ Automatically save recorded information to your MFD to access anytime
- ▶ Generate highly accurate spot soundings with precise depth contour lines

CHIRP SIDE-SCAN



- ▶ Clearly displays the shape of structure as a high definition image port and starboard
- ▶ 750 ft. detection range in each direction
- ▶ Visualize the seabed and underwater conditions like never before
- ▶ Available with Thru-Hull, Paired, or Transom Mount Transducers

FURUNO EXCLUSIVES

Fish-It Save time, fuel, and money

Creates a go-to-point with dynamic range rings and a course line between the point and the boat. A Fish-It data bar gives you the distance and bearing to the point as well as your SOG and COG.

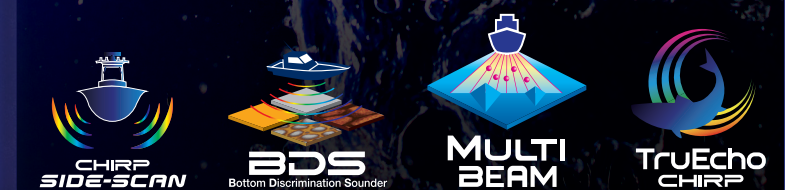
Drift-It Perfect drift every time

Creates a starting point for you to drift directly over your Fish-It waypoint with a 3, 5, or 20-minute drift. Maximize efficiency by letting the system calculate the vessel drift over your target.

Follow-It Precise depth trolling

Creates a route navigating a selected contour line at a specific depth range. This active route is sent directly to your NavPilot Autopilot to save time, fuel, & money with the help of your Multibeam Sonar.

FURUNO





19" & 24" Radomes

NXT & X-Class Radar Series: Offering powerful and compact Radar antennas. Available in your choice of Solid-State Doppler or Magnetron antenna configurations.



Open Array Antennas

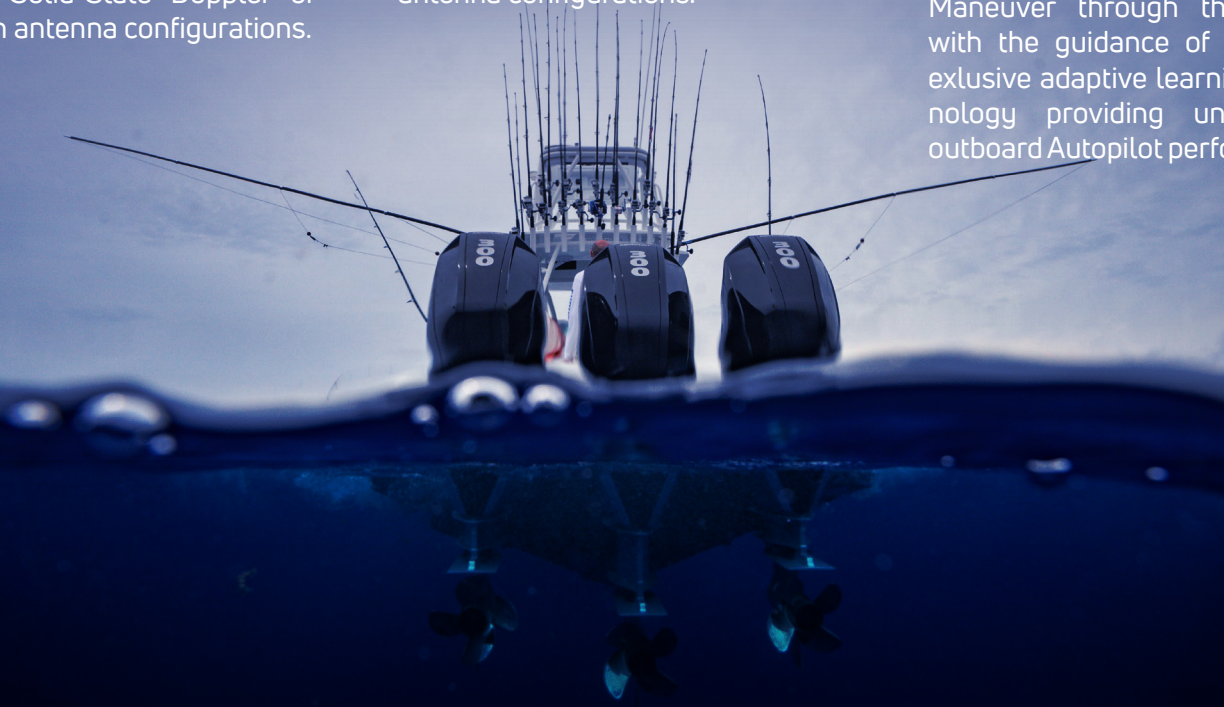
3.5', 4', & 6' NXT and X-Class Radar Series are available in Solid-State Doppler or Magnetron open array antenna configurations.



NavPilot 300

Achieve precise course control, from slow trolling to speeds well over 60 knots.

Maneuver through the water with the guidance of Furuno's exclusive adaptive learning technology providing unmatched outboard Autopilot performance.



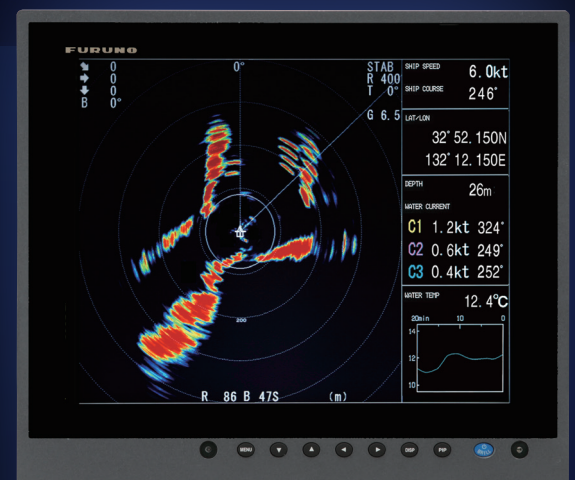
Sportfishing's Secret Weapon

CSH8LMK2 360-Degree Omni Sonar

- ▶ Excellent for tracking fast-swimming predators
- ▶ Echoes are redrawn on the display instantaneously
- ▶ 5,000' range; 0.54 second screen update at 1,000'
- ▶ Transmits in all directions without having to rotate the transducer
- ▶ Instantly detect & display schools of fish & underwater conditions
- ▶ Especially helpful when range and tilt require frequent adjustment

VI-CSH8L kit allows for importing of video from the CSH8LMK2 to your TZtouch3 or TZtouchXL MFD.

We've made it simple to add the new video source to any NavNet TZtouch MFD, including the ability to create custom pages that you can select from the edge swipe menu.



CSH8LMK2