

FURUNO

Furuno's TZtouchXL TZTBBX Is The Most Versatile Black Box MFD On The Water

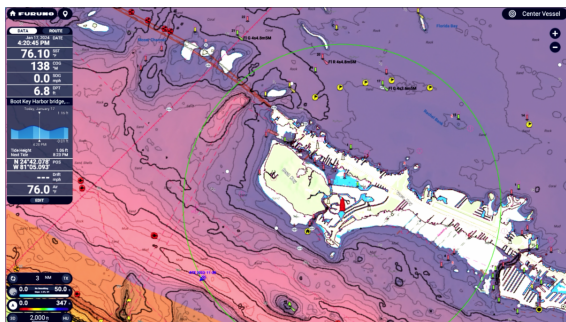
October 30, 2024

Camas, WA - Furuno is proud to introduce the TZTBBX, the latest addition to the TZtouchXL lineup. This advanced system features an easy-to-use multi touch interface, a new charting system, and Furuno's AI Routing and safety features, setting a new standard in marine electronics. Powered by a hexacore processor, the TZTBBX delivers lightning-fast response and supports up to a six-way split window on virtually any display size you choose, including their 17", 19", or 24" multi-touch displays.



All-new cartography, called TZ MAPS, offers an unprecedented level of detail and customization to suit the needs of every boater. Powered by TimeZero, it provides all-new charts for the US and other global areas with a single purchase directly from the MFD. TZ MAPS combines the detailed appearance of raster charts with the flexibility of vector charts, featuring crisp detail at any magnification level and eight customizable color palettes.

Users enjoy crowd-sourced community maps that allow them to update chart objects through the Layers menu, creating and modifying custom objects that can be shared with other TZ MAPS users via TimeZero's moderated service. Furuno's BathyVision offers custom depth color shading and configurable contour lines down to an amazing 3" resolution, providing the most eye-popping and accurate fishing charts available.



TZ MAPS with BathyVision offers an unprecedented level of detail and customization to suit the needs of every boater

NavNet TZtouchXL's safety features, including the all-new Risk Visualizer and AI Avoidance Route features, are unparalleled. These functions visually represent collision risks and suggest the best course to avoid them. Risk Visualizer assesses all of the objects around the vessel. Dynamic icons are automatically created for targets with the highest probability of collision, ensuring the captain has the information they need to maintain safe distances when passing. By analyzing the vessel's speed and course, other traffic, stationary objects, and depth information, AI Avoidance Route offers the safest route around hazards. It also considers both Approach Zones and Collision Zones, ensuring safe navigation.

The TZTBBX is compatible with Furuno's award-winning peripherals, including X-Class magnetron or NXT Solid-State Doppler Radar, high-powered Fish Finders, AIS, NavPilot Autopilots, and the DFF3D Deep Water Multibeam Sonar. It also supports essential features like PIN Code Lock for security.

The refined user interface of NavNet TZtouchXL simplifies navigation with Edge Swipe functions. Boaters can edge swipe from the top to quickly select custom quick page configurations, from the bottom to access features of the current screen in the Layers menu, from the left edge to display data boxes, and from the right edge for access to the most commonly used functions.

With a free TimeZero account, boaters can quickly and easily back up or retrieve their data from the cloud. TZ MAPS areas purchased from the TZTBBX are also unlocked in the free TZ iBoat app for mobile devices and TZ Pro navigation software, making it simple to plan waypoints and routes remotely and then download them directly to the MFD.

Furuno, a global leader in marine electronics since 1948, continues its legacy of innovation and excellence with the NavNet TZtouchXL, offering decades of experience and customer-focused design. For more information on NavNet

TZtouchXL, visit their dedicated website at www.NavNet.com. To learn more about Furuno's complete line of Marine Electronics, contact Furuno U.S.A., 4400 N.W. Pacific Rim Blvd., Camas, WA 98607, or visit their website at www.FurunoUSA.com.