



NAVnet
TZ
touch

NAVnet
TZ2
touch

NAVnet
TZ3
touch

SAR and Intercept Features

TZTL12F/15F/BB v7.01 and later, and TZT9F/12F/16/F/19F are compatible with useful functions of creating SAR (Search and Rescue) Patterns and Intercepting a target vessel that can be utilized in Coast Guard and patrol operations. TZT9/14/BB 4.11+ only has intercept mode. This document highlights these unique features.

1. Getting Started

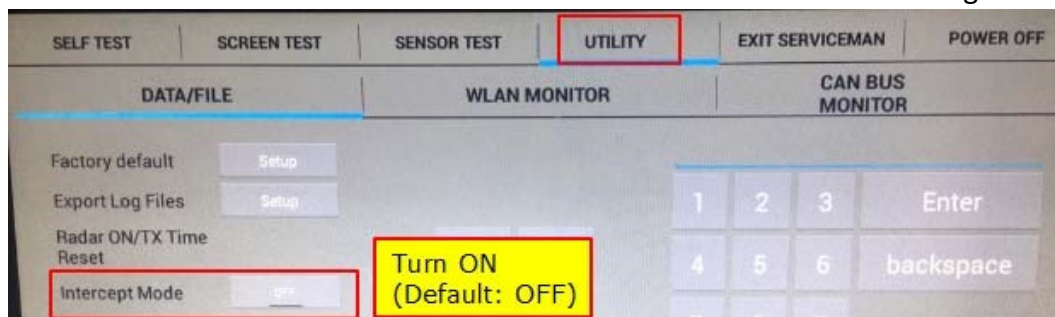
The SAR Pattern and Intercept functions are enabled in the “Service” Menu: Follow this path to enable the SAR Pattern and Intercept functions [Menu] - [Settings] – [Initial Setup] – [“Service”] with password*), access the [Utility] tab, turn on [Intercept Mode] and then exit [Service].

Note

*After service page loads, you will be prompted to get into factory mode, just cancel.

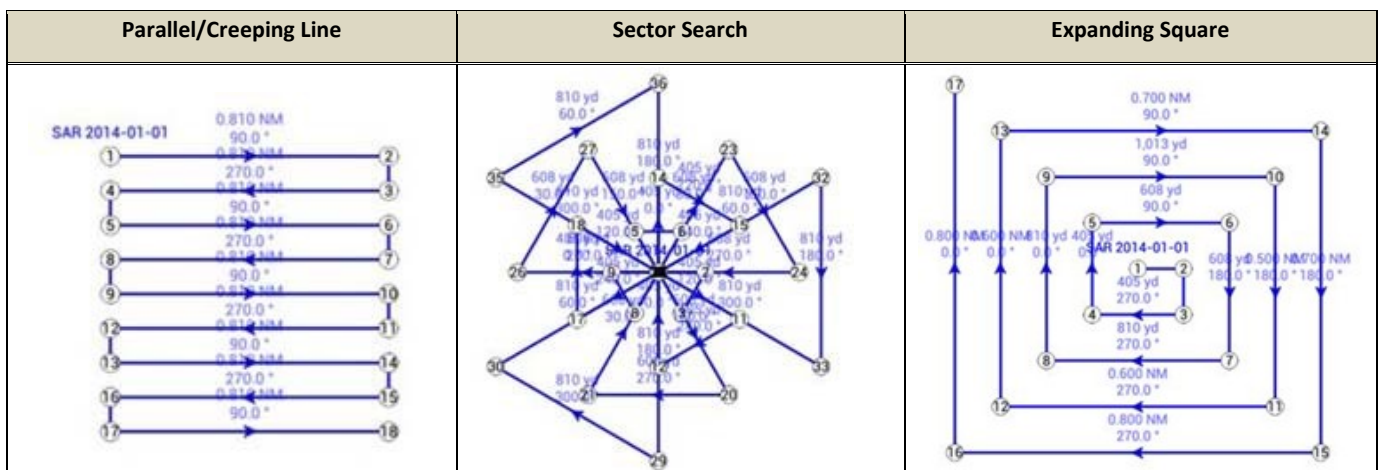
* Service Password: Furuno Service

These functions will then be accessible on the Plotter screen as shown in the following sections.



2. SAR Patterns

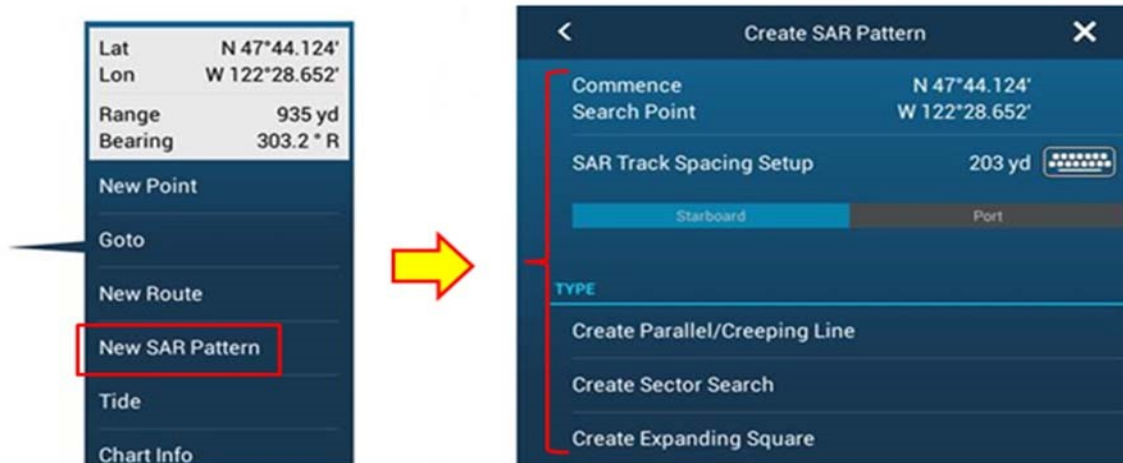
Three (3) types of **SAR Patterns** are available: Parallel/Creeping Line, Expanding Square, and Sector Search.



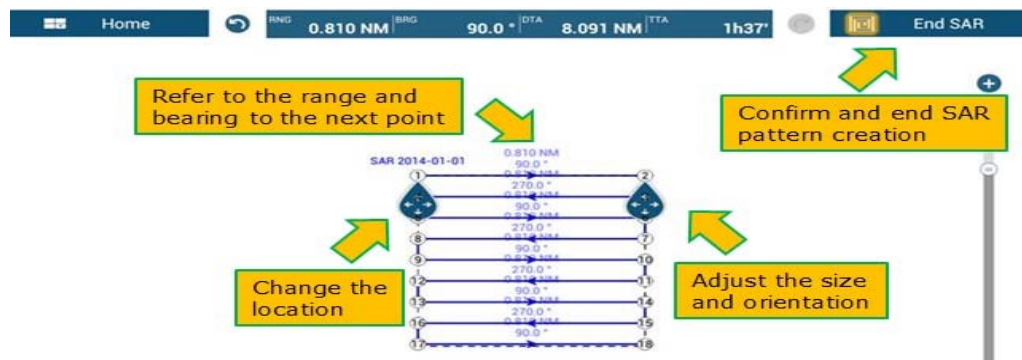
The SAR Patterns can be created as follows.

- (1) Tap on the Plotter screen, select [**New SAR Pattern**] from the contextual menu.
- (2) The [**Create SAR Pattern**] page will appear to select a SAR Pattern and preset the search area and track space:

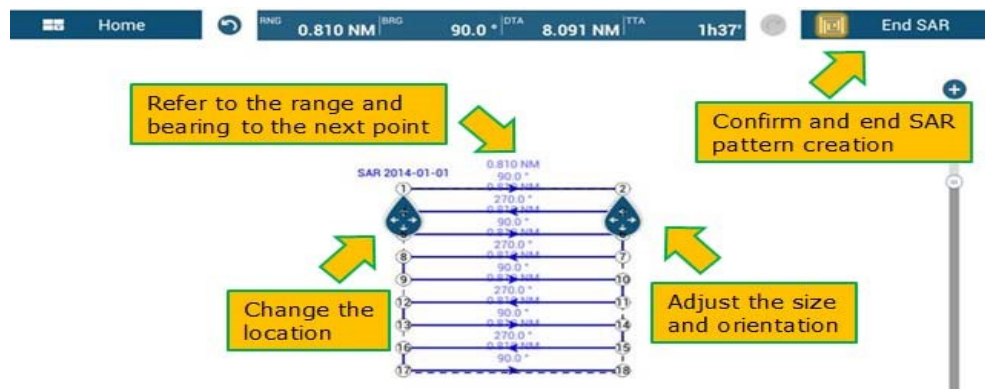
Select one of the SAR Patterns.



- (3) The selected SAR Pattern will appear on the screen. The location, size, and orientation of created SAR Pattern can be adjusted by dragging the teardrop icons.



- (4) Tap [End SAR] icon to confirm and fix the SAR Pattern.



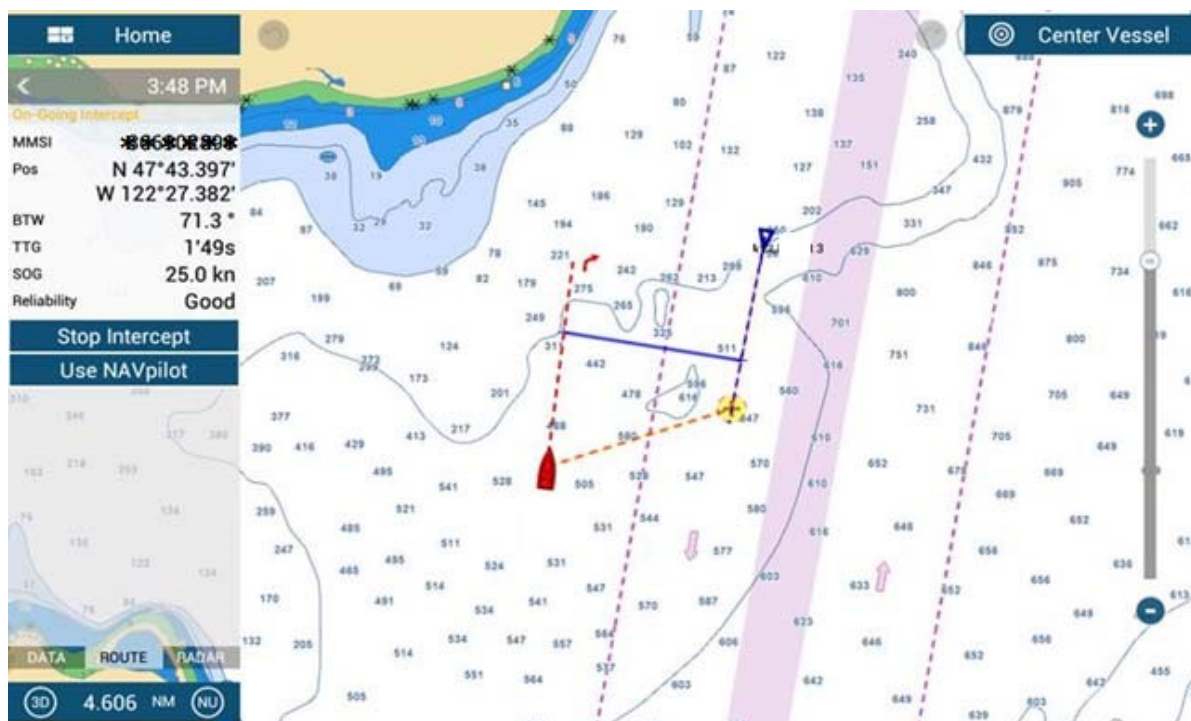
- (5) The created SAR Pattern can be activated for navigation after tapping [End SAR] and selecting [Start NAV] from the contextual menu.



3. Intercept

The **Intercept** function that has been available in TZT9/14/BB v4.01 or newer, TZTL12F/15F V7 or later, and TZT9F/12F/16/F/19F.

This feature is useful to create the most efficient route to a selected AIS or ARPA target.



This unique feature can be utilized to find a spot to meet a vessel. As an example, when finding a specific vessel among AIS and ARPA targets on the screen, this feature helps to find the closest spot to meet the vessel. The overall procedures are described with screenshots below.

(1) After finding an AIS or ARPA target, tap the target and select **[Intercept]** from the contextual menu. In this example, an AIS target is selected.



(2) A meeting point will be calculated from the speed and course of the own ship and selected target and shown with the **[+]** symbol on the screen.



To see details of the meeting point, the Intercept box on the Navigation data box is very efficient, where you can see the details such as the position of selected target.

Tips:

The meeting position dynamically changes as the speed and course of own ship and target vary.

(3) With the NAVpilot-300 or NAVpilot-700 connected, the route to the meeting point can be activated by tapping **[Use NAVpilot]** on the Intercept box. To deactivate the route, tap **[Cancel NAVpilot]**.



(4) To deactivate the **[+]** symbol, tap **[Stop Intercept]** on the Intercept box or tap the target or **[+]** symbol and select **[Stop Intercept]**.

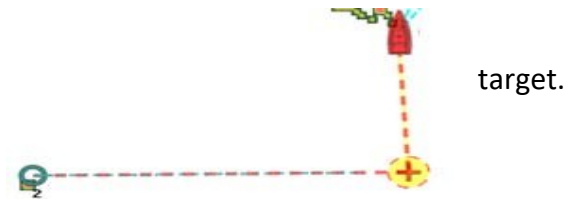


4. Notes

- (1) When own ship speed is too slow or the course is too deviated to intercept the target, the alert [**Cannot intercept target at current speed**] will appear at the top of the screen.



- (2) The screenshot shown at right is an example of ARPA. This function is available if the ARPA target is tracked.



- (3) Multiple targets **CANNOT** be intercepted simultaneously. **Only one (1) target can be intercepted at a time.**

- (4) When multiple MFDs are networked, note the following points.

- ✚ As an example, one target is intercepted on one of the MFDs. If another target is intercepted on the other MFD, the intercepted target on the previous MFD will be deactivated.
- ✚ With the NAVpilot-300 or NAVpilot-700 series connected, the route to the meeting point can be activated. When the route is activated on one of the MFDs, the other MFD(s) can also show the active route and deactivate the active route.

--- END ---

- All brand and product names are registered trademarks, trademarks or service marks of their respective holders.