

TZ MAPS for Furuno MFD FAQ

Which Furuno MFDs are compatible with TZ MAPS?

TZ MAPS are compatible with all TZtouchXL MFDs.

TZ MAPS are NOT compatible with TZtouch3 and below. TZtouch3 and below remain compatible with MM3D charts.

Can the new TZtouchXL MFDs use MM3D charts?

Yes, TZtouchXL can use both MM3D and TZ MAPS charts.

Is this the end of MM3D charts (including the free NOAA MM3D charts for USA)?

No, MM3D charts will continue to be supported and updated for the foreseeable future.

Free MM3D NOAA USA Vector Charts for the east and west coast along with the world chart are still preloaded on the MFDs microSD-Card.

Are the new TZ MAPS free for the USA?

No, unlike MM3D, you will have to pay to unlock the TZ MAPS for your area.

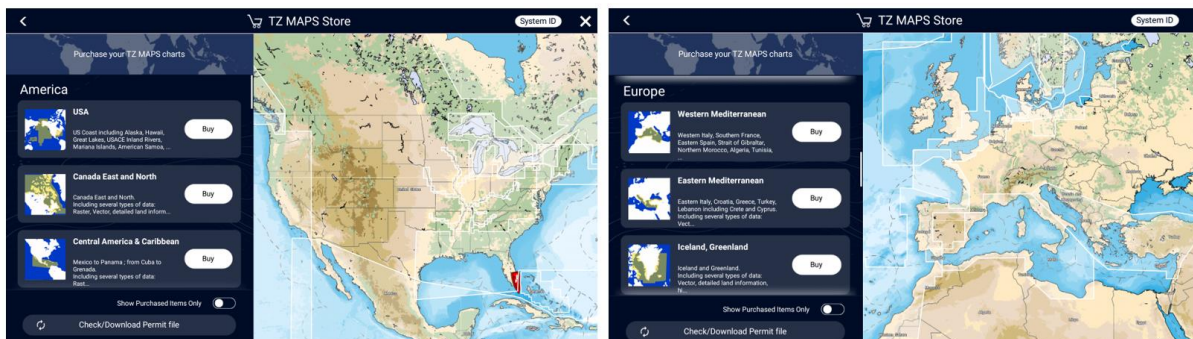
Customers that do not need the advanced features of TZ MAPS are welcome to use the free MM3D NOAA Charts for the USA. MM3D NOAA Raster charts are not preloaded from the factory, but users can download and install them at no cost.

Does TZ MAPS offer global coverage?

No, TZ MAPS does not currently offer complete global coverage, but most of the world is covered and more is planned. Customers that need coverage in areas that are not initially available by TZ MAPS can purchase MM3D charts for those areas.

The list of areas covered by TZ MAPS is available on the [TZ MAPS MapMedia](#) website. Covered areas are also displayed on the TZtouchXL MFD; press Home Button-Charts-TZ MAPS Store.

Examples of TZ MAPS areas. Available TZ MAPS areas outlined in white.



How can I purchase a TZ MAPS area? (first initial purchase)

There are two options for purchasing TZ MAPS. One option is the same procedure that is currently used for MM3D chart purchases, though your Furuno National Distributor and/or their authorized dealer network. The second option is new for TZtouchXL. With a TZtouchXL you can purchase TZ MAPS directly from the MFD using the TZ MAPS Chart Store and your credit card.

Option 1: Traditional purchase through dealer network

A TZ MAPS chart can be purchased just like an MM3D chart through Furuno National Distributors and/or their authorized dealer network:

- Communicate to your dealer the chart area/s that you want to purchase, providing your MFD's System ID.

Note: Must be a System ID that originates from a TZtouchXL MFD.

- The TZ MAPS chart is unlocked by Furuno on the TZ MapMedia Extranet (similar process as ordering an MM3D chart)
- As soon as the TZ MAPS area is processed, a permit file is generated and sent by email as an attachment.

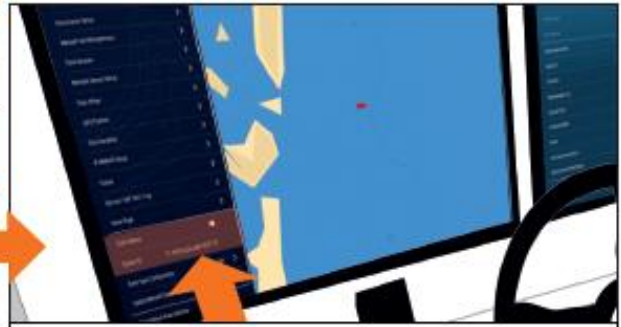
IMPORTANT: Unlike TZtouch3 and MM3D charts, unlocking a TZ MAPS chart using a single unlock code is **not possible**. A Permit file is used instead.

- To load the permit file on the TZtouchXL MFD, you can either:
 - Connect your MFD to the Internet (in which case the Permit file will download automatically from the TZ MapMedia server and then sync across all MFDs on the network)
 - Or copy the permit file (attached to email receipt) onto a USB Flash Drive and insert it into the MFD.
- In most cases, the TZ MAPS chart will be preloaded on the factory microSD-Card. If the data is not loaded on the microSD-Card, you can either download TZ MAPS files and install them via USB or connect the MFD to the Internet and download the chart directly to the TZtouchXL MFD from the TZ MAPS update screen.

Overview of TZ MAPS purchase through Furuno dealer



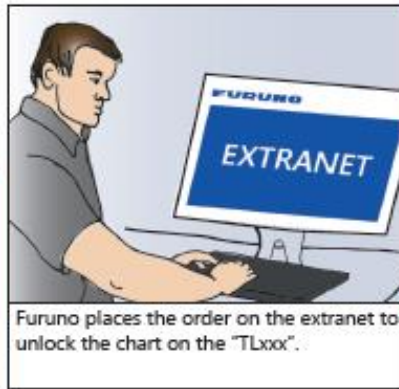
By default, the maps are pre-installed and locked on all MFDs in the network.



The dealer retrieves the system ID (TLxxx) in the "Initial setup" menu and notes it down.



I would like to order a map area for the TLxxx



Furuno places the order on the extranet to unlock the chart on the "TLxxx".



From his cell phone, the dealer sets up a wifi access point to share the Internet connection.



Connect to your phone's WiFi point via the General / Connectivity Settings menu.



In the Chart / TZ Maps Store Screen, tap on "Check / Download Permit" file and confirm that the chart has been unlocked.



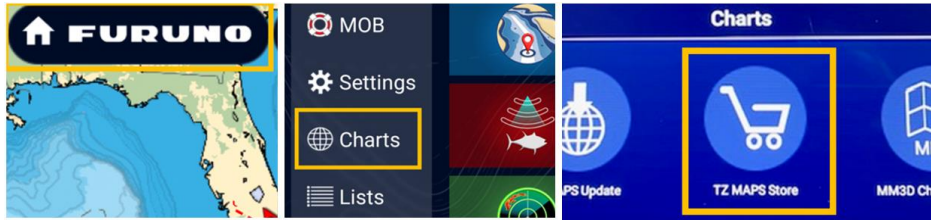
Charts are automatically unlocked on all MFDs in the network!



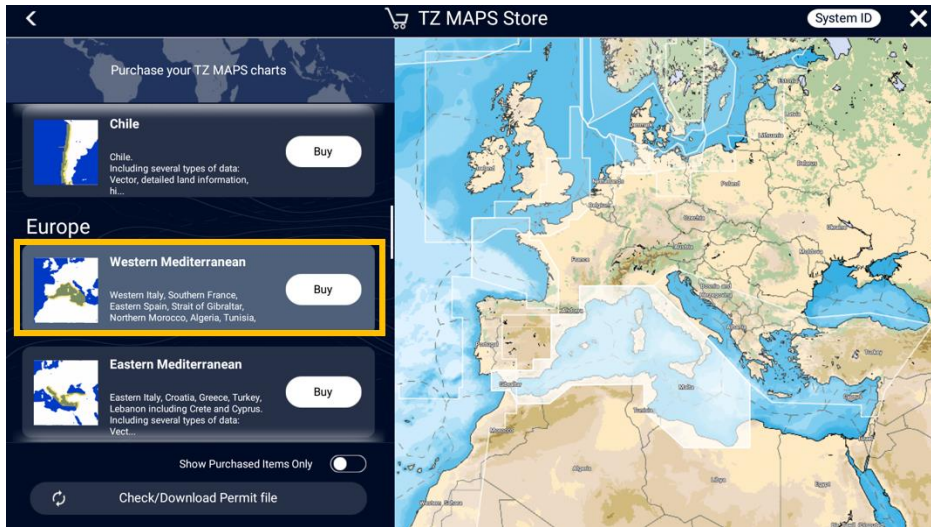
To check for update, use the Chart / TZ MAPS Update Screen and select your navigation area.

Option 2: Direct end-user purchase via the TZtouchXL MFD

Select the Furuno Home button, Charts, TZ MAPS Store





Now select the TZ MAPS chart to purchase from the world map.



Select **Buy** and then enter your **credit card** information to complete the transaction.

Complete your purchase

 Cart




 **Western Mediterranean**
(Ref: em001)
Western Italy, Southern France, Eastern Spain, Strait of Gibraltar, Northern Morocco, Algeria, Tunisia, Balearic Is. Sardinia & Corsica. Including several types of data: Raster, Vector, detailed land information, high-resolution satellite photos, high resolution Bathymetry. \$250.00

Order for license: TLB7C1BA8FBB38FA57A9

Total: \$250.00

[Tax Exempt?](#)
[Enter Promotional Code](#)

Email

Securely save payment details for future use

First Name Last Name

Card Number

MM YY CVC

Zip Code Tax: \$0.00

Pay \$250.00

Overview of direct TZtouchXL purchase of TZ MAPS



By default, the maps are pre-installed and locked on all MFDs in the network.



If the MFD is not already connected to the Internet, set up a wifi access point to share the Internet connection.



Connect to your phone's WiFi point via the General / Connectivity Settings menu.



In the Chart / TZ Maps Store Screen, select the area you want to purchase and tap on the "Buy" button



Enter your Credit Card information to complete the transaction.



In the Chart / TZ Maps Store Screen, tap on "Check / Download Permit" file and confirm that the chart has been unlocked.



Charts are automatically unlocked on all MFDs in the network!



To check for update, use the Chart / TZ MAPS Update Screen and select your navigation area.

What is the initial cost of a TZ MAPS area?

The price of a TZ MAPS area remains the same as the price of a wide MM3D area, example, \$250 in the USA. Coverage is similar to that of a wide MM3D area. Although the price remains the same, TZ MAPS come with a lot of added benefits:

- Raster **and** Vector charts are “combined” with TZ MAPS (no need to make two purchases as you would have to with MM3D).
- TZ MAPS includes High Resolution Bathymetric Data (BathyVision) which is used to render dynamic bathy contour charts along with high-resolution depth shading (fishing charts).
- TZ MAPS includes one Year of updates (subscription required to extend updates after the 1st year).
- AI Routing. TZ MAPS is required for auto routing on TZtouchXL.
- Risk Visualizer* and AI Avoidance Route*. These features require TZ MAPS.

* Also requires a DRS NXT Radar

After the first free year, how can I purchase a TZ MAPS update?

After the 1-year free update that comes with every TZ MAPS initial purchase, customers that want to keep their chart updated will need to subscribe directly from their MFD. Because this is a subscription that requires the customer’s credit card, it will not be possible for the dealer to sell updates.

Note: If the subscription is not possible, dealers can purchase the chart again (\$250) which would extend the update period for another year (but this would be much less cost effective than the subscription program).

What is the cost of keeping a TZ MAPS area updated (after the first year)?

You will be required to subscribe to keep your TZ MAPS updated after the first year. The price of the subscription varies per area (For example, in North and Central America, the renewal is from \$19.99 to \$30.99).

Is it a requirement to subscribe after one year?

No, it is not a requirement for you to subscribe after one year. Customers that decide not to subscribe will no longer be able to update their charts, but they will still be able to view their existing installed charts.

What if I decide to not to subscribe right away but wait one or multiple years?

Customers that do not immediately subscribe after the one-year free update will not be penalized if they decide to wait and start a subscription later. They will pay the regular subscription price once they decide to have access to the new update.

I plan to add a TZtouchXL MFD to my existing TZtouch3 network. I already have MM3D charts unlocked on my TZtouch3. What are my options?

Option 1

No plan to purchase any TZ MAPS and just want to use existing MM3D charts.

Nothing special needs to be done. Just connect the TZtouchXL MFD to the TZtouch3 network (which will remain the Chart Master). The TZtouch3 will automatically share its System ID with the TZtouchXL MFD/s and the same unlock code(s) that were previously generated can be used to unlock the identical MM3D charts on the TZtouchXL MFD/s. Going forward you can keep purchasing MM3D charts and use the same unlock codes on all MFDs on the network.

You may have to load the MM3D charts on the TZtouchXL MFD/s microSD-Card as MM3D charts may not be preloaded for your area.

IMPORTANT: With this setup, you will **NOT** be able to purchase TZ MAPS on your TZtouchXL MFD because the System ID originates from a TZtouch3, which is not compatible with TZ MAPS.

Option 2

I want to use my MM3D charts on the TZtouchXL right now but may want to purchase TZ MAPS in the future.

The above solution (option 1) will not work for you as TZ MAPS are not compatible with TZtouch3.

You will need to exchange your TZtouch3 System ID with the TZtouchXL System ID with your Furuno National Distributor and/or their authorized dealer network (making the TZtouchXL MFD the new Chart Master). After the System ID exchange has been performed on the MFDs and on the TIMEZERO (MapMedia) Extranet, new unlock codes for your existing MM3D charts will be re-generated. The TZtouchXL will share its System ID with the TZtouch3 MFDs so that the new MM3D unlock code(s) can be used on both TZtouchXL and TZtouch3 MFDs. Going forward, it will then be possible for you to continue ordering MM3D charts and TZ MAPS. Just note that TZ MAPS will never show up on the TZtouch3 MFD/TZT2BB as those units cannot display TZ MAPS.

Recap for System ID exchange process:

1. Write down (or better, take a picture) the TZtouch3 existing System ID (referred to as "old System ID").
2. Turn "Chart Master" OFF on the existing TZtouch3 MFDs and/or TZT2BB.
3. Connect the TZtouchXL to the network and set it as "Chart Master".
4. Write down the TZtouchXL System ID (referred to as "new System ID").
5. Proceed to exchange the old System ID with the new System ID by contacting your Furuno National Distributor and/or their authorized dealer network.
6. New unlock codes are then generated by the TIMEZERO (MapMedia) Extranet for existing MM3D charts.
7. Download new codes to both TZtouchXL and TZtouch3 MFDs/TZT2BB.
8. If needed, load the MM3D data on TZtouchXL microSD-Card.
9. Going forward, it will be possible to purchase both MM3D and TZ MAPS (using your new System ID).

Is there an upgrade path or discounted price from MM3D charts to TZ MAPS?

No, TZ MAPS is a brand-new product and there is no discount available to upgrade an MM3D area to a TZ MAPS area.

I am a TZ iBoat user, do I have to purchase the chart twice?

When you purchase a TZ MAPS chart on the TZtouchXL MFD and log in that MFD to a My TIMEZERO account, it will unlock the same chart/s for one year on TZ iBoat (you must log into the same account on TZ iBoat).

After one year, if you want to keep both charts updated, you only need to subscribe to the area once (either from TZ iBoat via the WebStore or from your TZtouchXL MFD). Subscriptions to a chart area are tied to the My TIMEZERO account and will benefit all devices that are using that account provided that the chart has been purchased once on the TZtouchXL MFD.

I am a TZ Navigator or TZ Professional user, do I have to purchase the chart twice?

No. However, you must link your TZtouchXL System ID with your TZ Pro or TZ Navigator System ID. Once you link your TZ Navigator or TZ Pro system ID to a TZtouchXL system ID the charts that were purchased for the TZtouchXL will be available for TZ Navigator or TZ Professional. Contact your Furuno National Distributor and/or their authorized dealer network to link the System IDs.