

FM4850

Black Box Marine VHF Radiotelephone

FAQ



Q. What major features does the FM4850 have?

The FM4850 is multifunction device. It is a VHF Radio, 72 channel GPS (requires optional antenna), AIS receiver, 30w Loud Hailer with DSC Calling.

Q. Can I make DSC calls from the FM4850 using NavNet TZtouch and TZtouch2?

Yes. You can initiate DSC calls from TZT software version 6.01 and TZtouch2 version 6.21 software.

Q. Does the FM4850 have dedicated weather channels?

Yes. There are 10 dedicated weather channels for North America.

Q. Can I change between USA, Canada, and International channels?

Yes. It is very easy to change the channel group setting from the main menu.

Q. Does the FM4850 come with a built in GPS similar to the FM4800.

The FM4850 comes with a built in 72 channel GPS receiver. It does not come with a built in GPS antenna, that is optional and must be added to receive GPS signals. Recommended GPS antennas are the Furuno GPA017 and GPA017S.

Q. What NMEA I/O ports does the FM4850 have?

The FM4850 has one NMEA0183 and one NMEA2000 I/O port.

Q. NMEA 0813 Sentences

Input: DTM, GGA, GLL, GNS, RMA and RMC

Output: DSC, DSE, GLL, RMC, VDM (requires optional antennas)

Q. NMEA200 PGNs

Input: 059392/904, 060160/416/928, 065240, 126208, 127258,
129026/029/044

Output: 059392, 060928, 126208/464/993/996/998,
129025/026/029/038/039/040/041/540/793/794,
129795/797/798/801/802/808/809/810

Q. Can the FM4850 provide GPS data?

Yes. The FM4850 has an internal GPS receiver but requires an optional external antenna. Recommended GPS antennas are the Furuno GPA017 and GPA017S.

Q. How many hailer connections does the FM4850 have?

The FM4850 has one hailer connection, 30watts at 4ohms.

Q. What comes in the box?

The FM4850 is supplied with the HS4800 handset and mounting bracket, SP4800 Speaker and mounting bracket, 5M extension cable, UHF connector, owner's manual, gaskets and mounting hardware. Main components are shown below.



Q. Are there any accessories for the FM4850?

Handsets: HS4800. Part # 001-468-560-00. The FM4850 comes with one handset. Two more can be added for a total of three handsets.

Speaker: SP4800, Part # 001-468-580-00. The FM4850 comes with one speaker. Two more can be added for a total of three speakers.

Extension cables: 5M 001-468-600-00 and 10M 001-468-610-00. These cables not only extend the remote handset but also have a pair of wires that come out the end for the remote speaker (SP4800). The FM4850 comes with one 5M extension cable. These cables can be ganged together for a max of 30M.

GPS antenna: GPA017 or GPA017S.

Q. Can I extend my handset and if so, how far?

The handset cable can be up to 30 meters long. Furuno offers 5m and 10m extension cables. They can be ganged together for a max length of 30M.

Q. Will the FM4850 connect to my older NMEA 0183 products.

Yes. The FM4850 has an NMEA 0183 I/O port to connect to these units. You can select NMEA0183 or NMEA2000 out, but not both at the same time.

Q. Is the FM4850 waterproof?

The IP rating of the FM4850 and associated accessories is IP67.

Q. If I have more than one handset can I use the FM4850 as an intercom system?

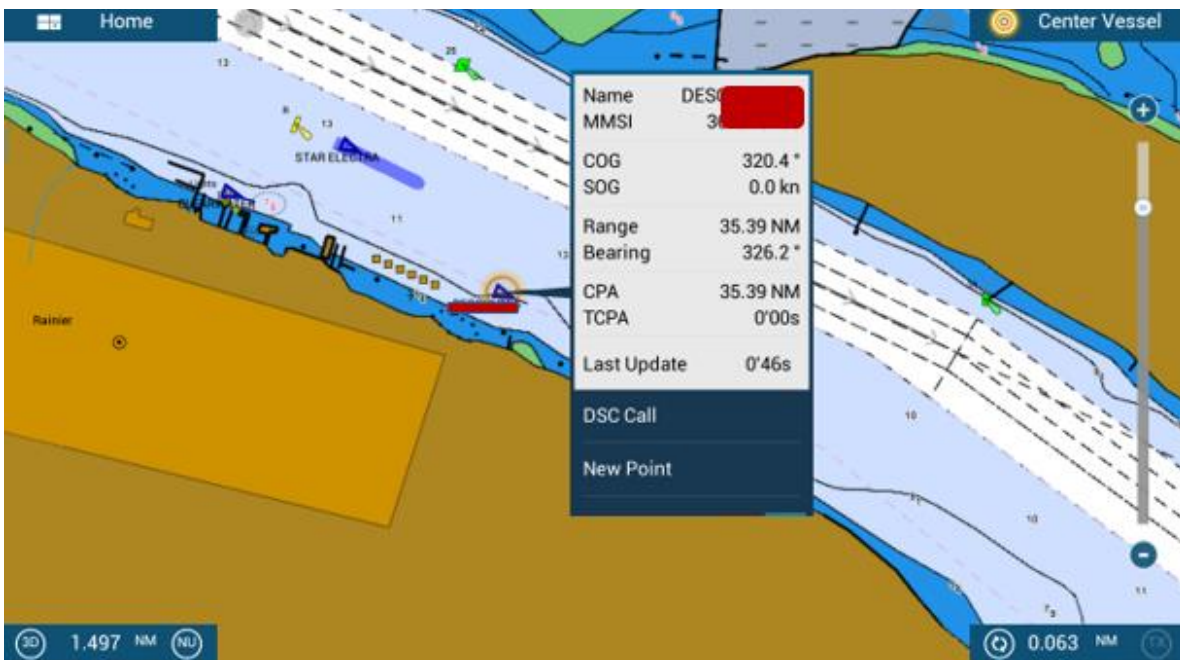
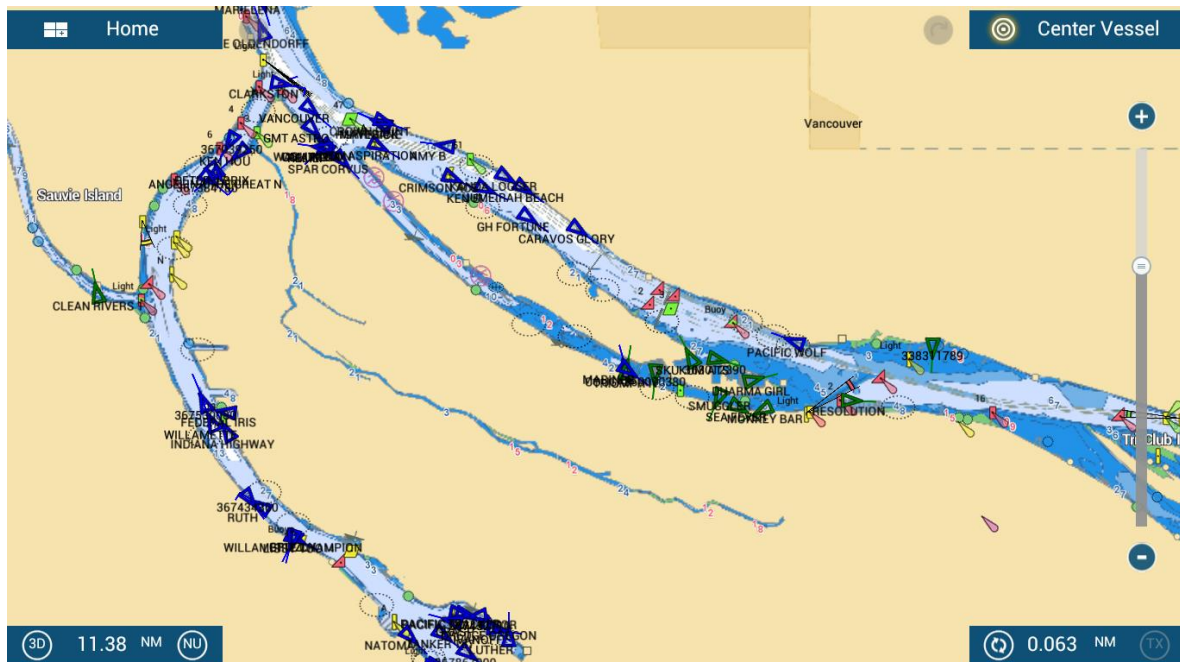
Yes. You can make calls to the individual handsets. You can also name the individual handsets.

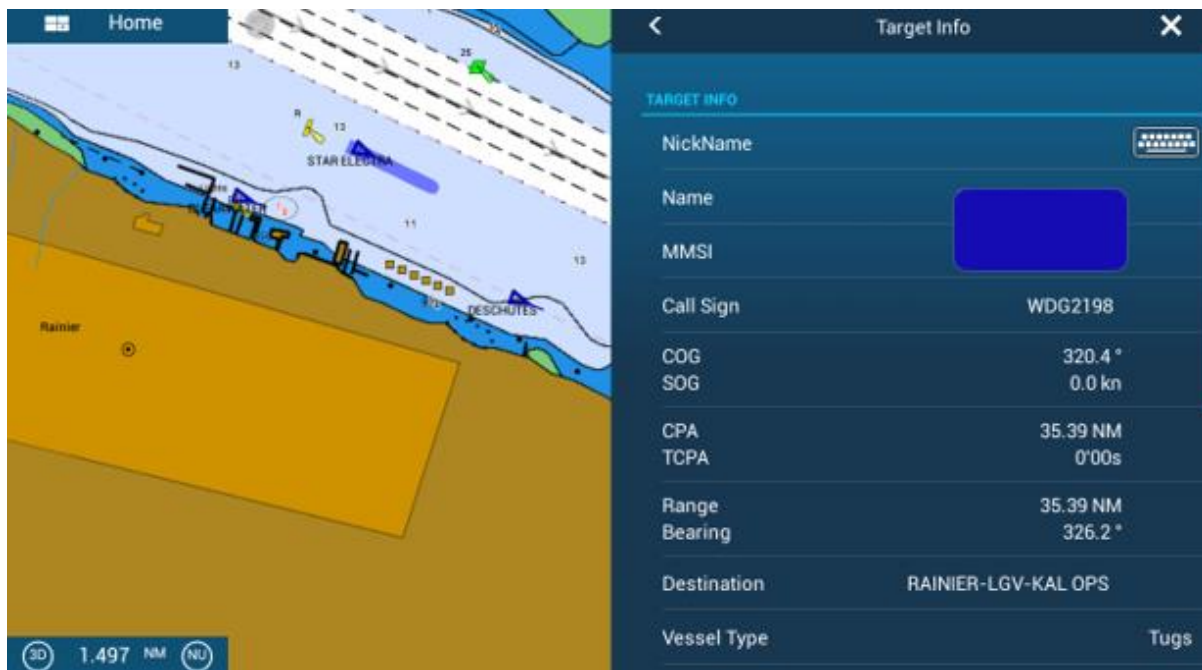
Q. Can I adjust the backlight and contrast of the handset display.

Yes. Both the backlight and the contrast can be adjusted for day and nighttime use.

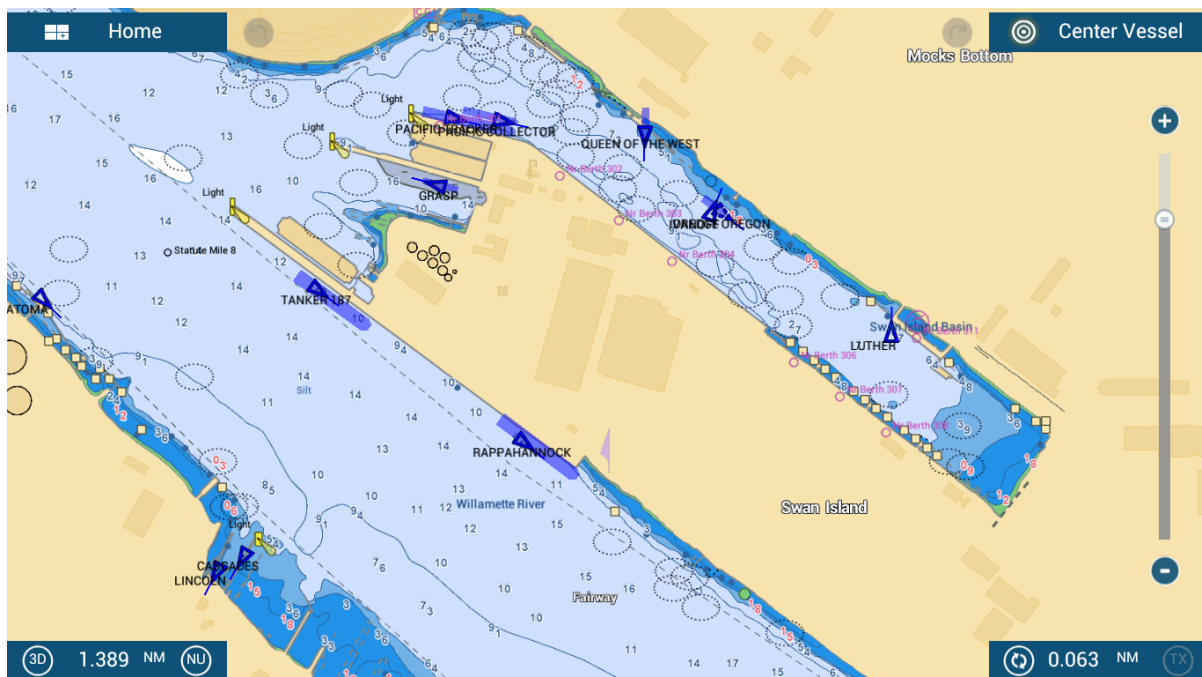
Q. What type of AIS information can I expect to see on my TZtouch MFD once the FM4850 has been installed and connected to the system?

Images of live AIS data received by FM4850, displayed on a TZT2





Detailed vessel information



Rev 3/13/19