

# FURUNO



**NAVnet**  
*TZ*  
touch  
**NAVnet**  
*TZ2*  
touch

## DRS4DNXT DRS6ANXT

# Navigation Using Target Analyzer Rain Mode Technology

## INDEX

1. Navigating in Rain with NXT
2. Auto Mode vs. Target Analyzer – Rain Mode
3. Auto/Manual Mode vs. Target Analyzer

# Navigating in Rain with NXT

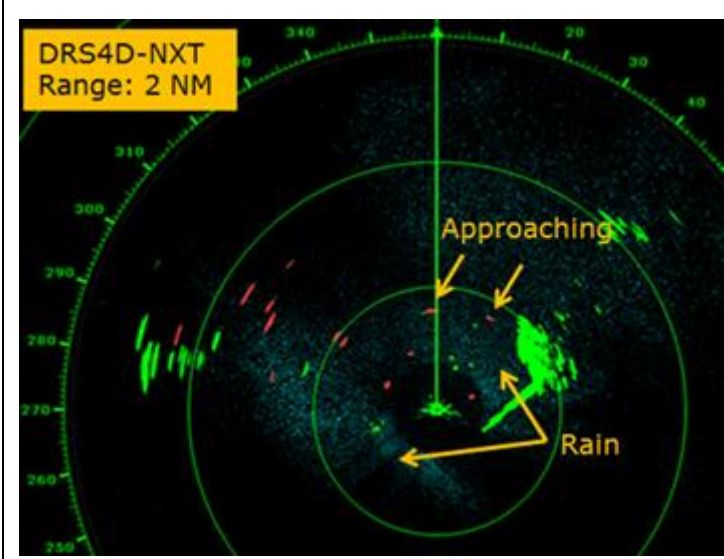
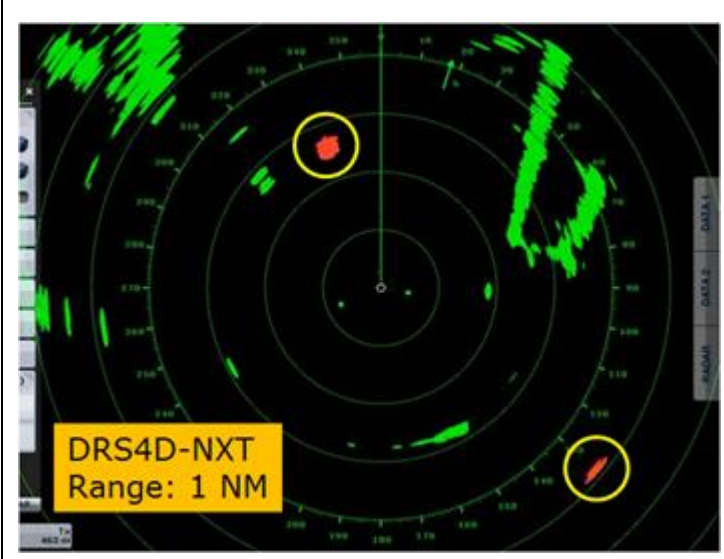
The **DRS4DNXT** and **DRS6ANXT** offer the unique **Target Analyzer** function utilizing Doppler signal processing. While the Target Analyzer has two (2) modes: **Rain Mode** and **Target Mode**, this document highlights the useful presentation of **Rain** mode when navigating in the rain.

## Getting Started

Target Analyzer mode is selectable in [Settings]/[Menu] – [Radar] – [**Target Analyzer Mode**] – [**Rain**] or [**Target**] (default). Make sure to select [Rain] for the Rain mode.



## How the screen appears...

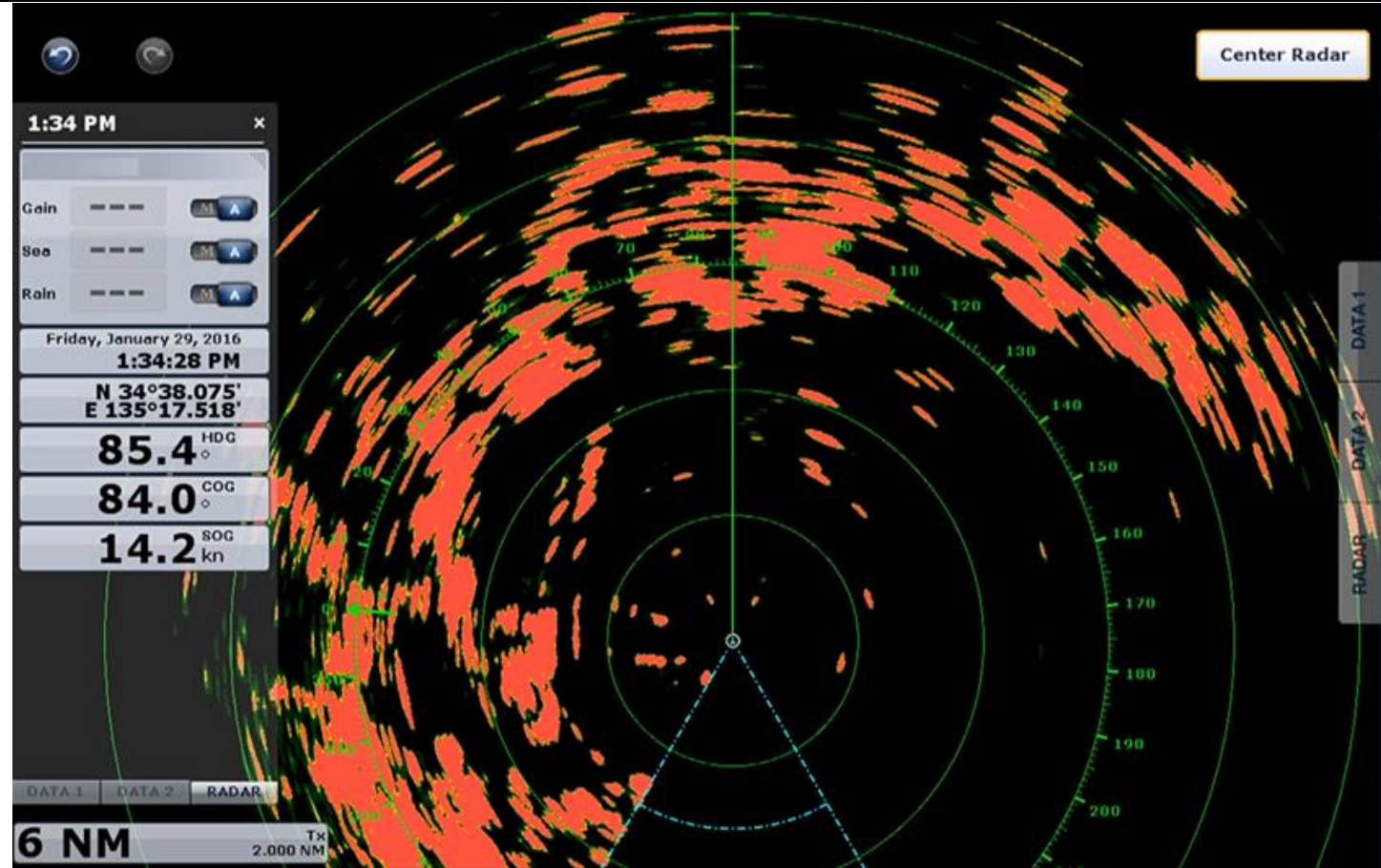
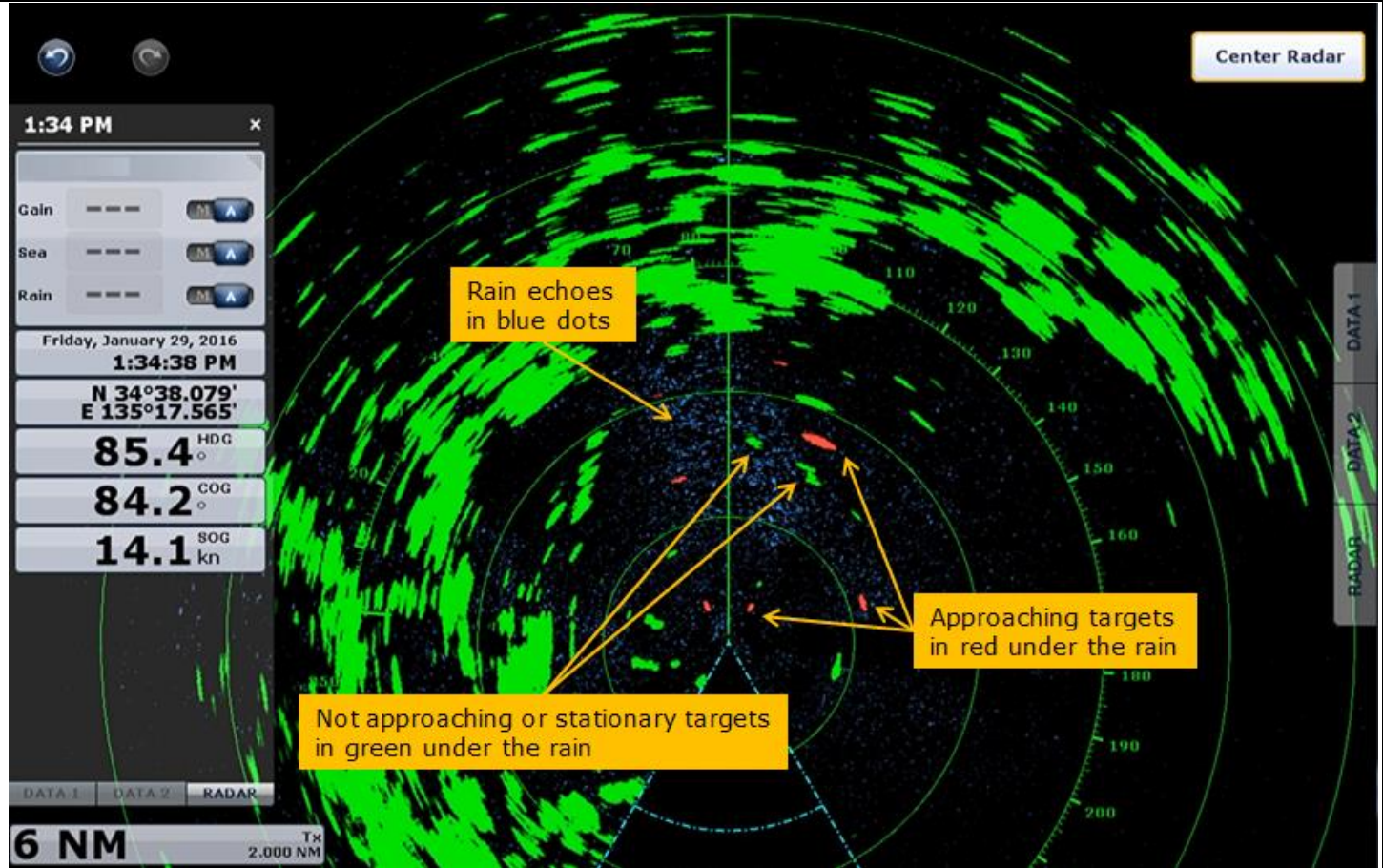
Rain Mode	Target Mode (Default)
	
Targets approaching own ship at faster than 3 knots (radial velocity $\geq 3$ knots) are shown in <b>Red</b> , and the others are in <b>Green</b> . In addition, rain echoes are shown in <b>Blue</b> dots.	Targets approaching own ship at faster than 3 knots (radial velocity $\geq 3$ knots) are shown in <b>Red</b> , and the others are in <b>Green</b> . This mode is selected by default.



# 1. Auto Mode vs. Target Analyzer – Rain Mode

The following screenshots compare the generic Auto Mode with Target Analyzer – Rain Mode in the same location.

Display : TZT14  
Sensor : DRS4DNXT  
Range : 6 NM  
Condition : Light rain

Auto Mode	Target Analyzer – Rain Mode
	
In the Auto Mode, sea and rain clutter are effectively suppressed and targets are clearly shown on the screen.	With the <b>Target Analyzer – Rain Mode</b> activated, while approaching (Red) and not approaching (Green) targets are visually separated, rain echoes are presented in blue dots. Approaching targets under the rain are also shown in Red and can be easily identified.



# 2.Auto/Manual Mode vs. Target Analyzer

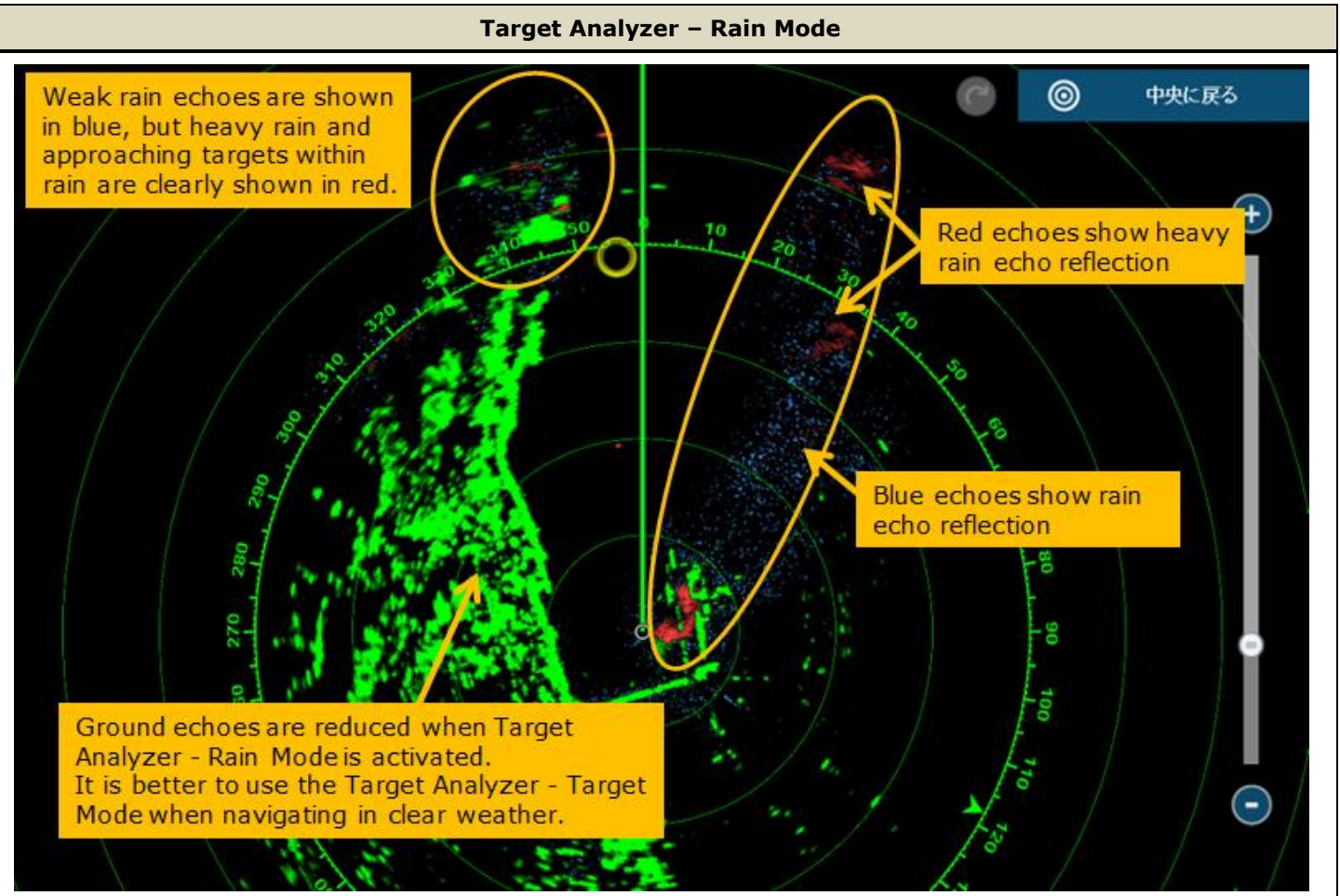
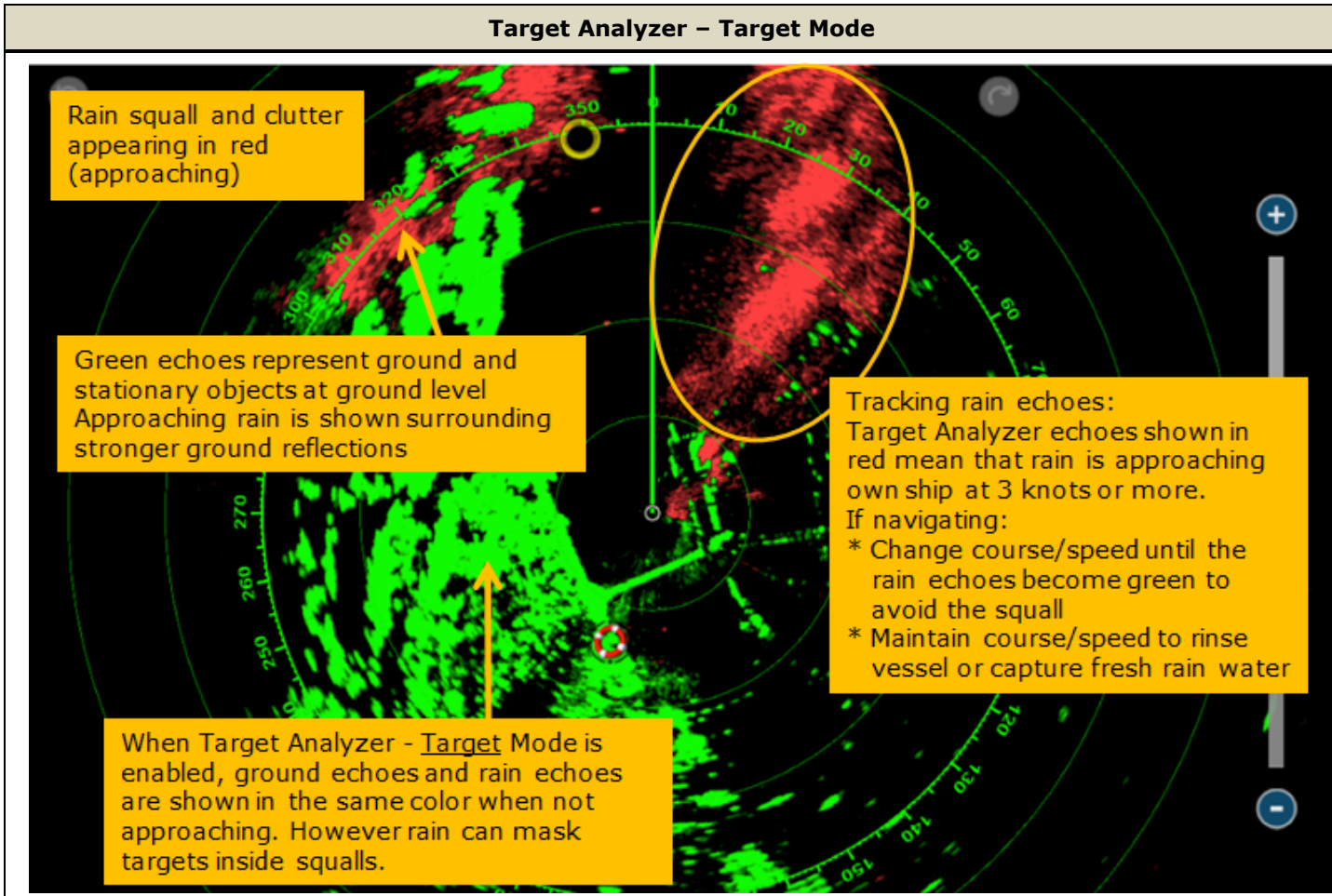
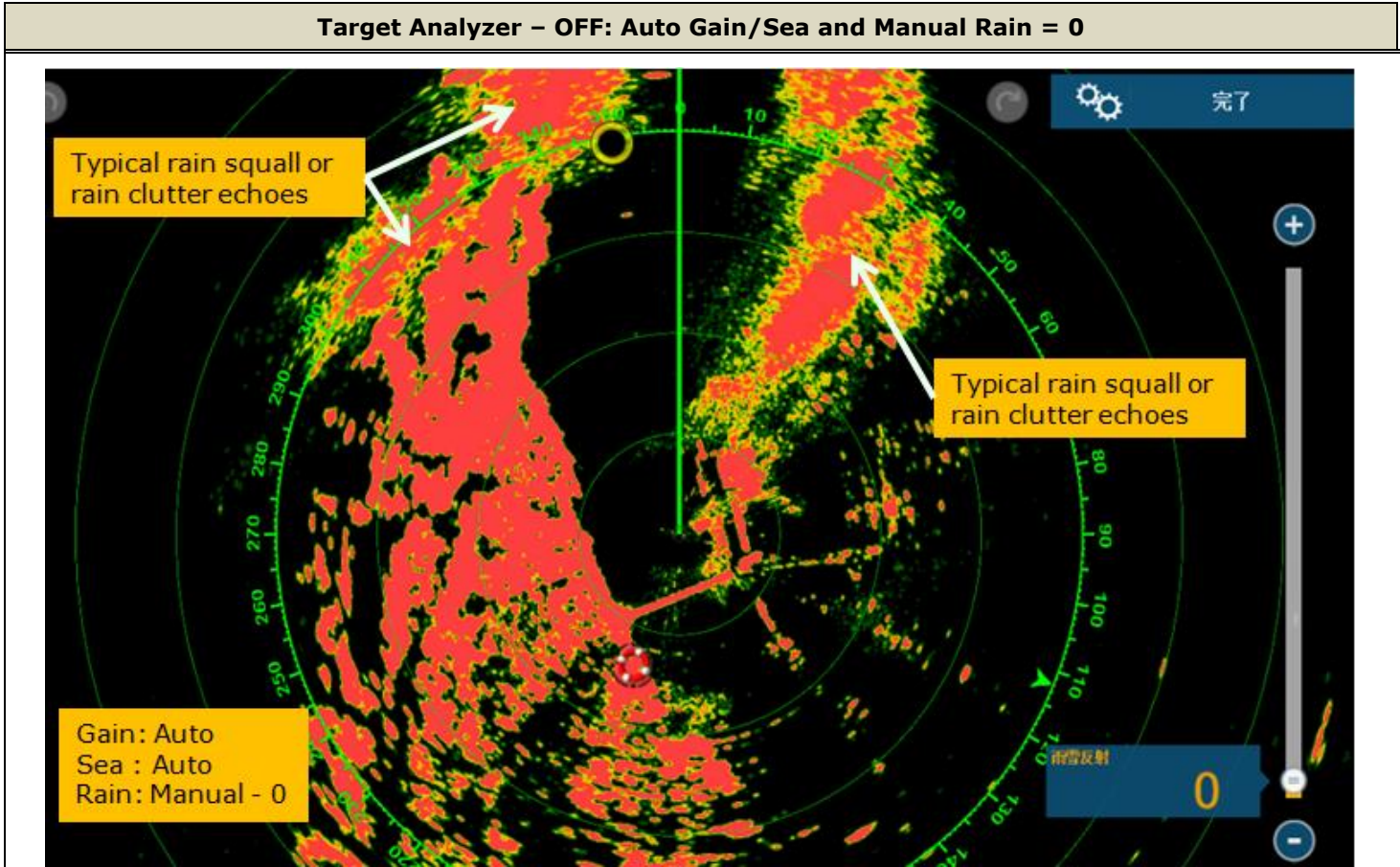
Display : TZTL15F  
Sensor : DRS6ANXT  
Range : 8 NM  
Condition : Heavy rain

**Auto Gain/Sea and Manual Rain** (top right):  
Target Analyzer is turned off and manual rain is set to [0]. Rain echoes cover the top of the screen.

**Target Analyzer – Target Mode** (bottom left):  
Rain echoes are shown in red if approaching to own ship or green if not approaching.

**Target Analyzer – Rain Mode** (bottom right):  
Rain echoes are shown in blue dots, and approaching targets under the rain are shown in red.

- Notes on Rain Mode:**
- (1) Heavy rain could be shown in red.
  - (2) Ground echoes are reduced when the Rain Mode is activated. It is better to use the Target Mode when navigating in clear weather.



--- END ---