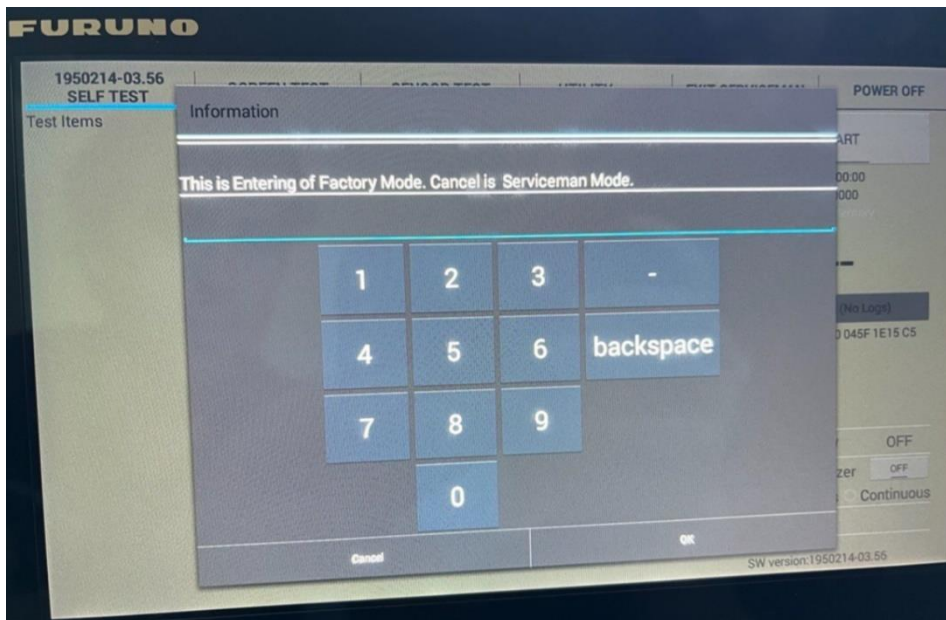


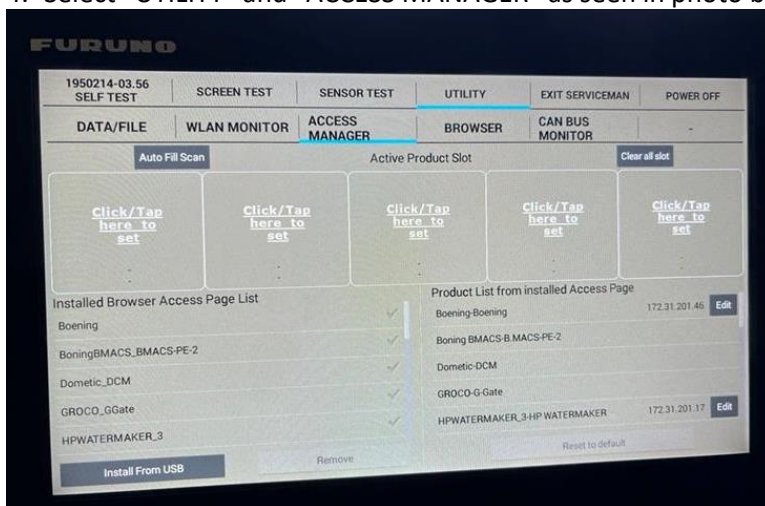
SEAKEEPER RIDE – FURUNO COMPATIBILITY

To enable the Seakeeper Ride app on Furuno TZT3 MFD's, please follow the instructions below:

1. Update the Furuno MFD to the latest software (for TZT3 it is v3.7 and TZTXL is v24.21) and ensure Ride Software Module updated to current software release (2024.2.0 or higher) and confirm software release version. Proceed with below and ensure to commission Seakeeper Ride following the commissioning document.
2. Power on Furuno MFD and go to Settings > Initial Setup > Service
3. When "Factory Mode" pops up click CANCEL

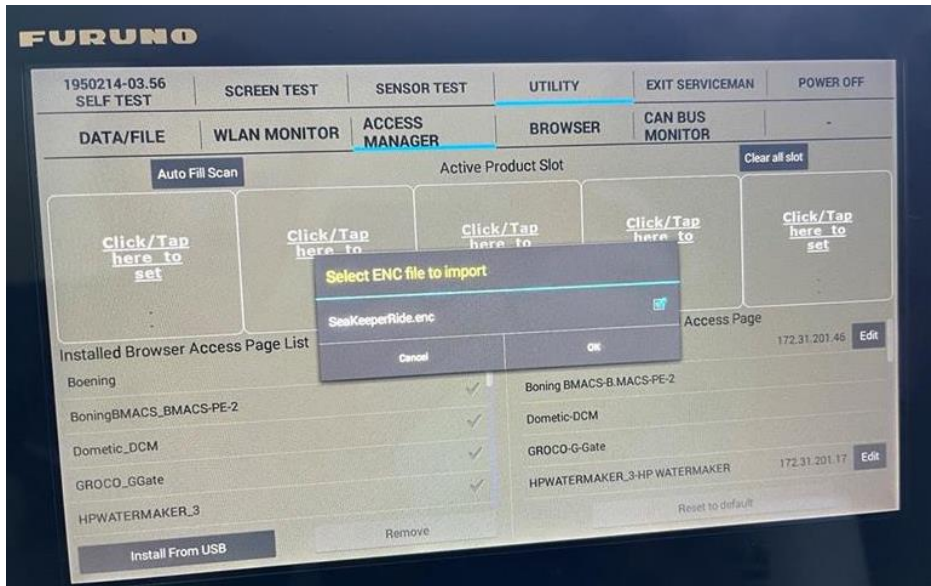


4. Select "UTILITY" and "ACCESS MANAGER" as seen in photo below

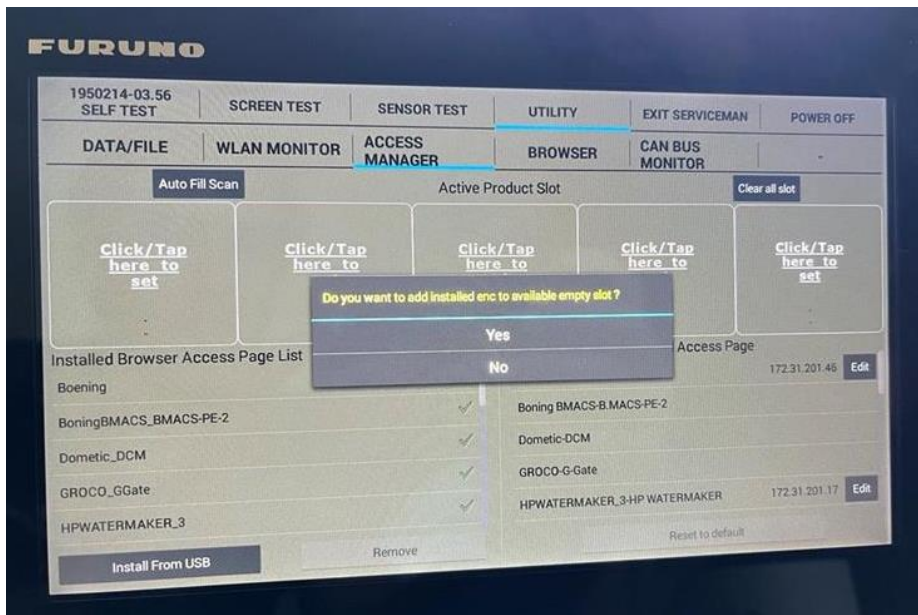


SEAKEEPER RIDE – FURUNO COMPATIBILITY

5. Plug a USB stick with the SeakeeperRide.enc file into MFD and click “Install From USB”
6. Select box for SeakeeperRide.enc and click “OK”

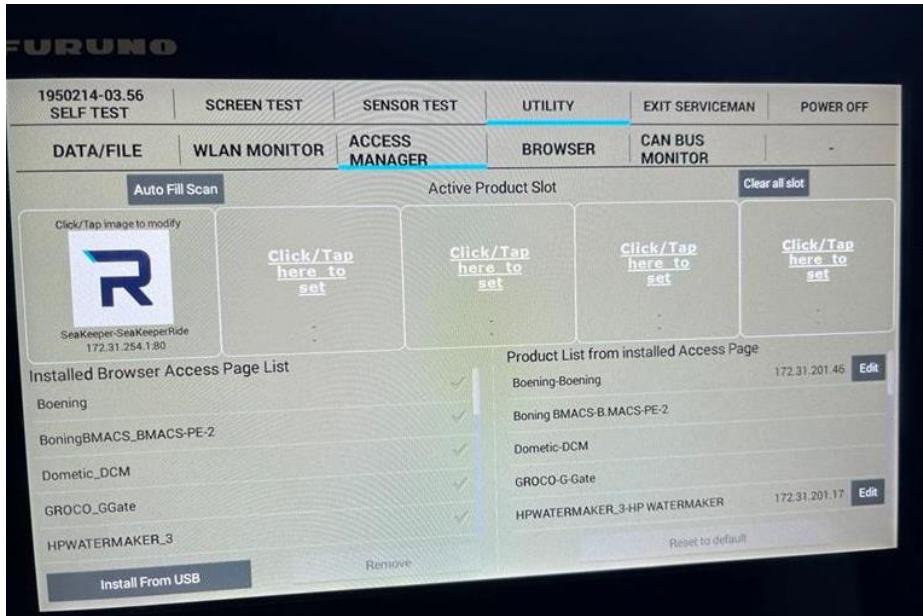


7. Click “Yes”



SEAKEEPER RIDE – FURUNO COMPATIBILITY

8. Once the Seakeeper Ride icon appears on the left, in the top right corner, click “Power Off”



9. Once off, power on MFD and Ride then add Ride App to home page. We have noticed that Furuno takes a little longer than some of the other MFD brands to launch apps. The Ride App Icon will load with a spinning wheel, then briefly go to a black screen, and then take you to the Ride Home Page.

10. For a new or existing installation, continue with commissioning of Seakeeper Ride by following the steps below.

SEAKEEPER RIDE – FURUNO COMPATIBILITY

Seakeeper Ride | Commissioning Instructions



1. Download BILT App: Install the BILT App on your smartphone (Scan QR Code)
2. BILT App Commissioning: Within the BILT App, search for “Seakeeper RIDE (Commissioning)” and follow the on-screen instructions to complete the commissioning process. For Seakeeper Ride to connect properly to the Multifunction Display (MFD), the switches on the Software Module must be in the correct positions. Access the switches by removing the rubber covering on the upper left side of the Software Module.

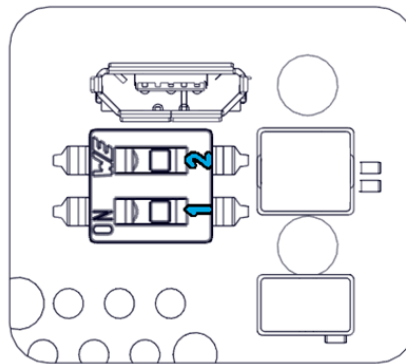
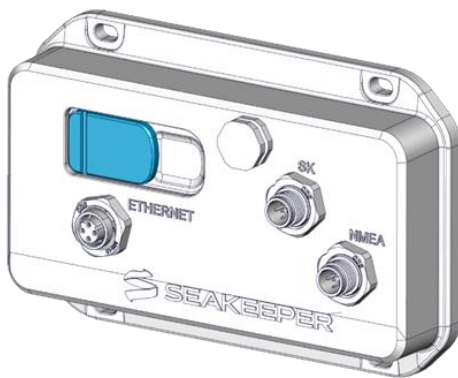
Do not move Switch 2. Follow the table below to configure Switch 1 based on the MFD brand. The ‘on’ position is to the left.

Garmin, Raymarine, **Furuno**

Switch 1 Off

Simrad, Lowrance, B&G,

Switch 1 On

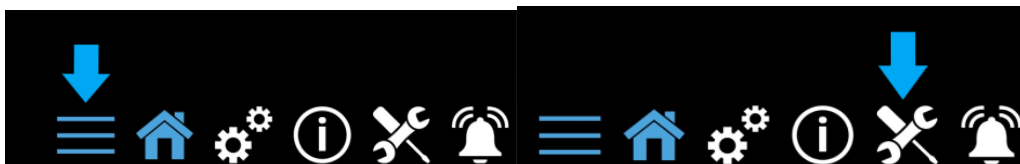


1. Factory reset Seakeeper Ride

We recommend that a software update be performed first before proceeding past this point.

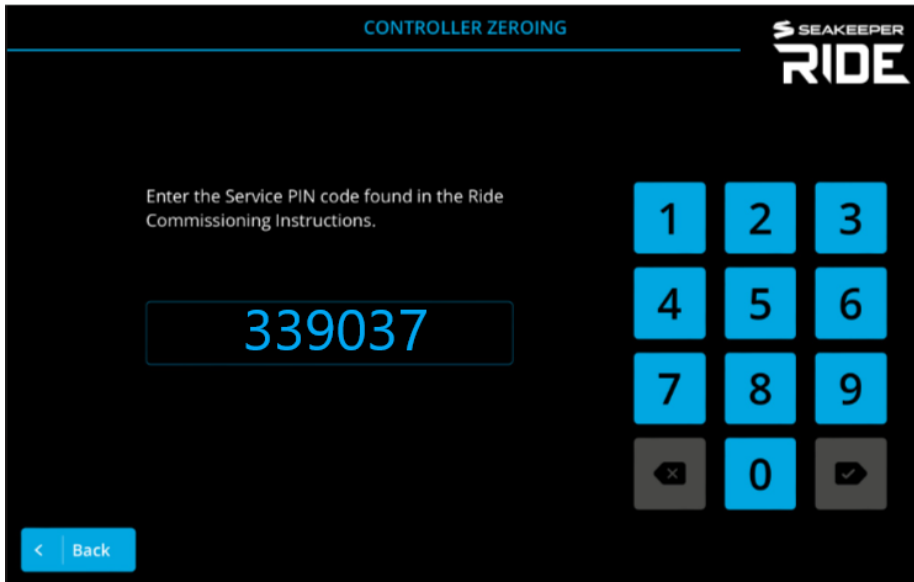
The Service Menu Items can be utilized for adjusting certain parameters of your Seakeeper Ride system.

- A) To access the Service Menu Items, choose the button with three lines on the bottom right of the MFD, then choose tool icon on the bottom right.



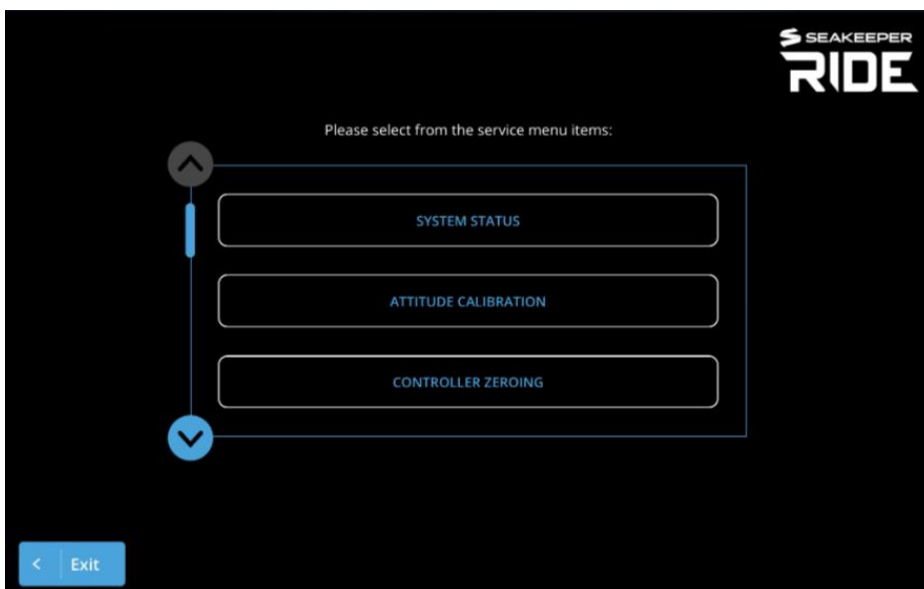
SEAKEEPER RIDE – FURUNO COMPATIBILITY

B) Enter the below service code.



Note: If equipped with a keypad, the Keypad will be disabled while in all service screens.

C) Scroll to the bottom of the menu and click factory reset



SEAKEEPER RIDE – FURUNO COMPATIBILITY

2. Begin commissioning by ensuring the following:

- The boat is on an even keel/ground (level port to starboard)
- The boat is at trimmed level and sitting on the trailer with no excess bow down or stern down angle
- The boat is outdoors and has consistent GPS satellite signal
- You have access to Controllers (If the boat is in the water this may not be possible, and therefore the boat may need to be trailered for the full procedure)
- You are aware of the cable side of the Actuators (example: port side Actuator Cable is in the port cable entry)
- You have access to the Distribution Module for unplugging and re-plugging in Controllers
- You have access to the MFD and optional Keypad
- You have access to circuit breakers
- You have access to the engine key switch
- No unnecessary persons are on the vessel

4. Refer to MFD Device to calibrate Seakeeper Ride.

The installation instructions to calibrate Seakeeper ride are step-by-step – please follow these steps. The screen shot below is the first confirmation page.

