



Accessing the Secondary Display on a Single Monitor TZT2BB Installation



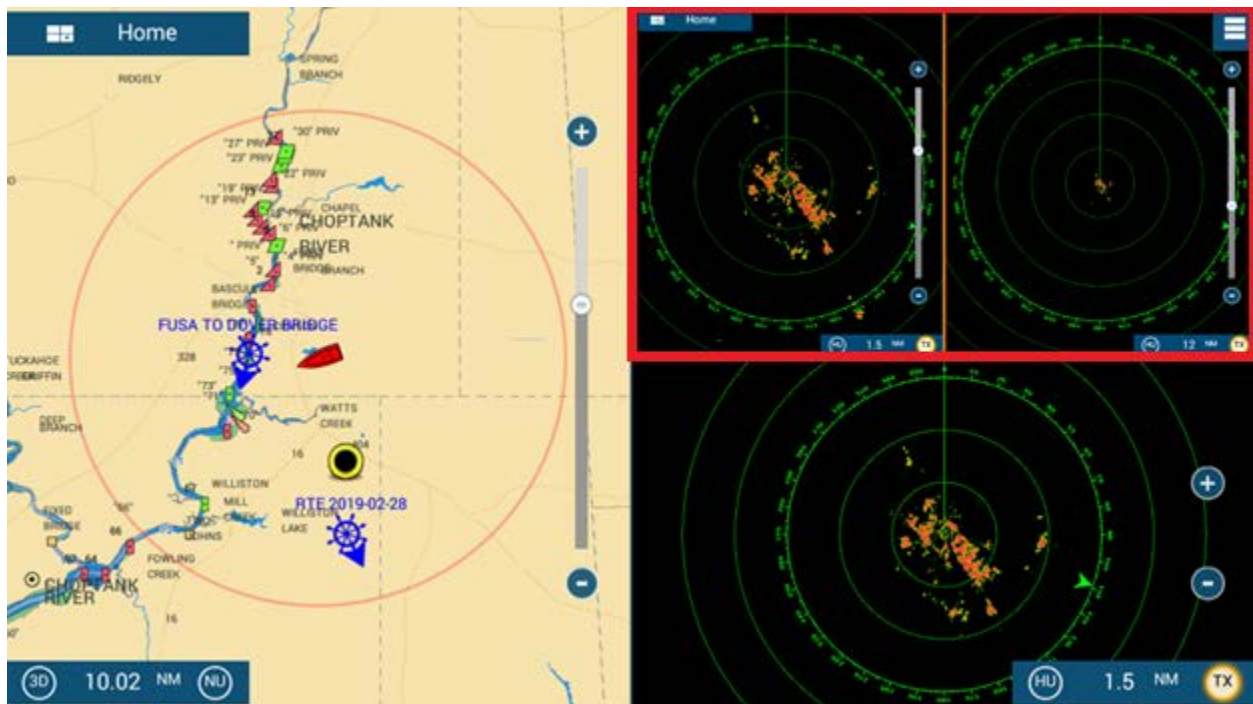
Accessing and Operating the Secondary Display Output on a Single Monitor TZX2BB Installation

Take full advantage of both video outputs when using only a single monitor TZX2BB installation.

Examples of why this installation may be useful:

1. Assist with performing software updates when having only one display connected
2. Use of two different radars or sounders on one monitor
3. Allows for "Quarter" page weather
4. Up to five panels of data possible (fit more information on screen)
5. Look at two composite video signals at once (normally only one composite allowed per display)

Example of dual range with one radar and single range of second radar on same display



Example of secondary video (as three-way screen) displaying in quarter selection of primary display



Items need for this install configuration:

1. USB A to Micro B cable
2. HDMI cable

Very short cables are best suited for this purpose to reduce signal loss and prevent induction of noise.



Installation instructions:

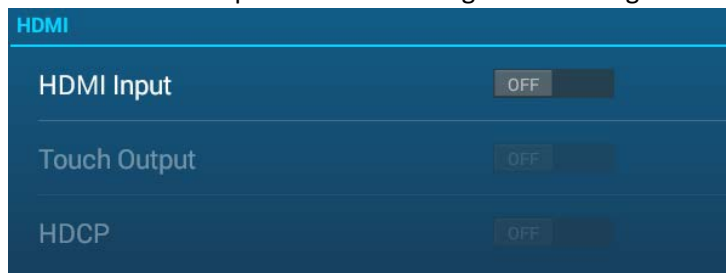
Simple! Connect the secondary display in the same manner that you would an external touch device.

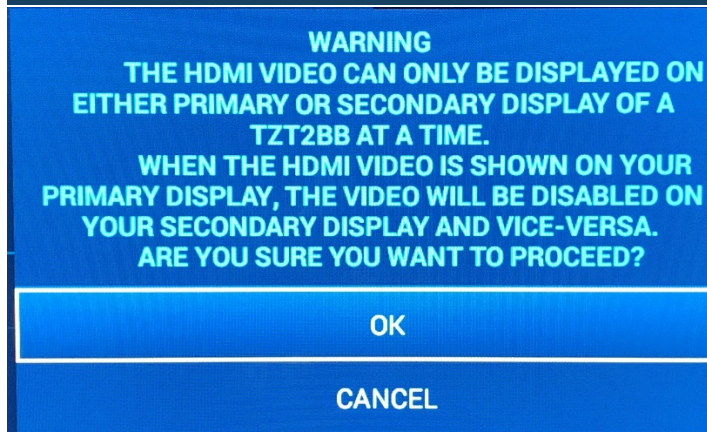
1. Connect HDMI Out 2 to the HDMI Input
2. Connect USB Touch Control for HDMI 2 into USB 2
 - a. USB 2 has the Micro B connection

Setup:

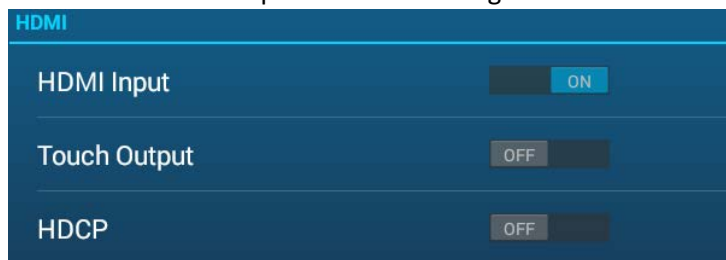
Once the TZT2BB is booted, setup your HDMI input.

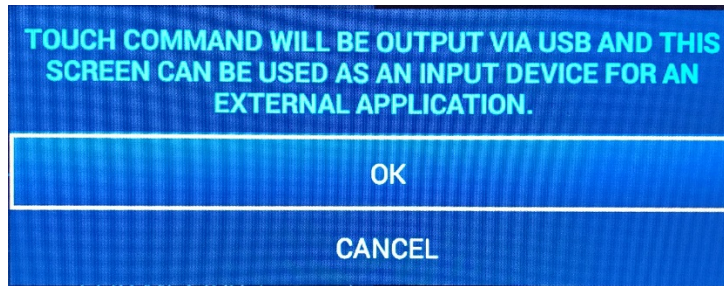
1. Touch the Home icon
2. Touch the Settings icon
3. Scroll down and select Camera
4. HDMI is the top section here
 - a. Turn "On" HDMI Input and acknowledge the warning



- b. A warning dialog box with a blue background and white text. The text reads: 'WARNING THE HDMI VIDEO CAN ONLY BE DISPLAYED ON EITHER PRIMARY OR SECONDARY DISPLAY OF A TZT2BB AT A TIME. WHEN THE HDMI VIDEO IS SHOWN ON YOUR PRIMARY DISPLAY, THE VIDEO WILL BE DISABLED ON YOUR SECONDARY DISPLAY AND VICE-VERSA. ARE YOU SURE YOU WANT TO PROCEED?'. At the bottom are two buttons: 'OK' and 'CANCEL'.

- c. Turn "On" Touch Output and acknowledge the notification





- d. HDCP is for use with devices requiring copyright protection. This has no purpose in this configuration, so leave that setting off.

5. Setup a page with full or quarter screen video



6. Select "HDMI" as the video source

Operation notes:

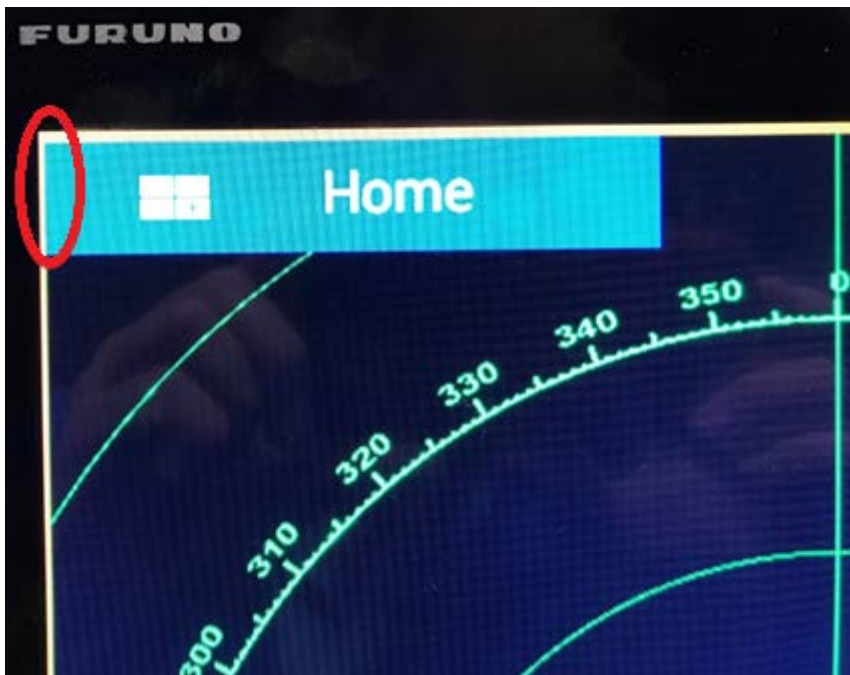
It can be tricky in full screen video mode to remember which display output of the TZT2BB you are operating. Consider the following tips and tricks.

1. If you see the 3-bar icon to the top right, you are on the video page (secondary TZT2BB display)



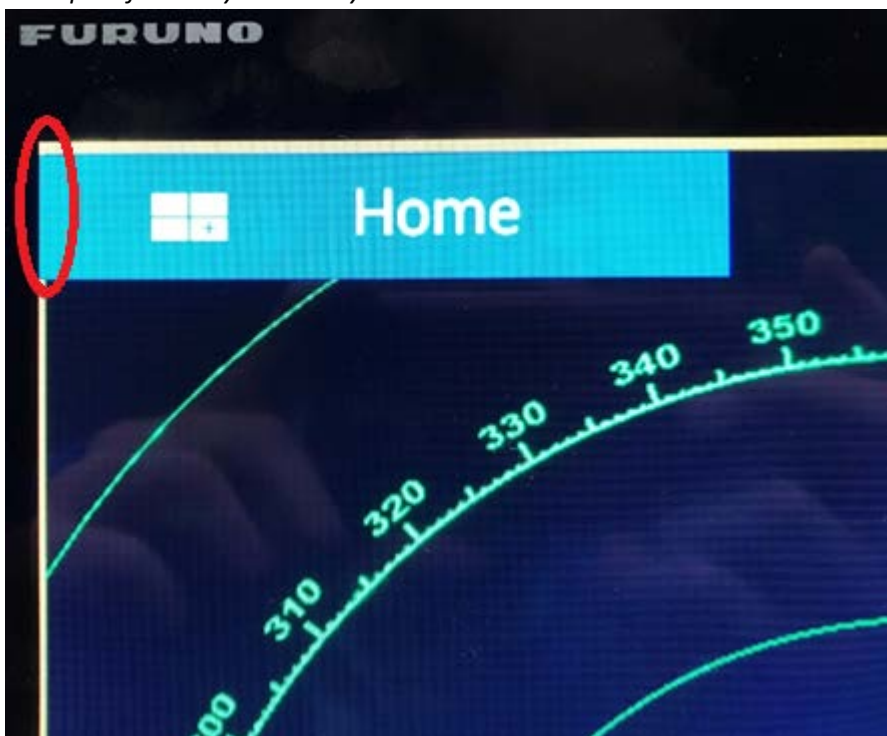
2. On full page video, for the first nine seconds, the home key that is displayed at the top left is the primary home key. After nine seconds you will see the secondary home key.
 - a. Other than the time, there is a subtle difference shown on the left edge that can be seen with an astute eye. The primary display home key will go all the way to the monitor edge, while the secondary will have a slight inset/border.

Example of Secondary Home Key

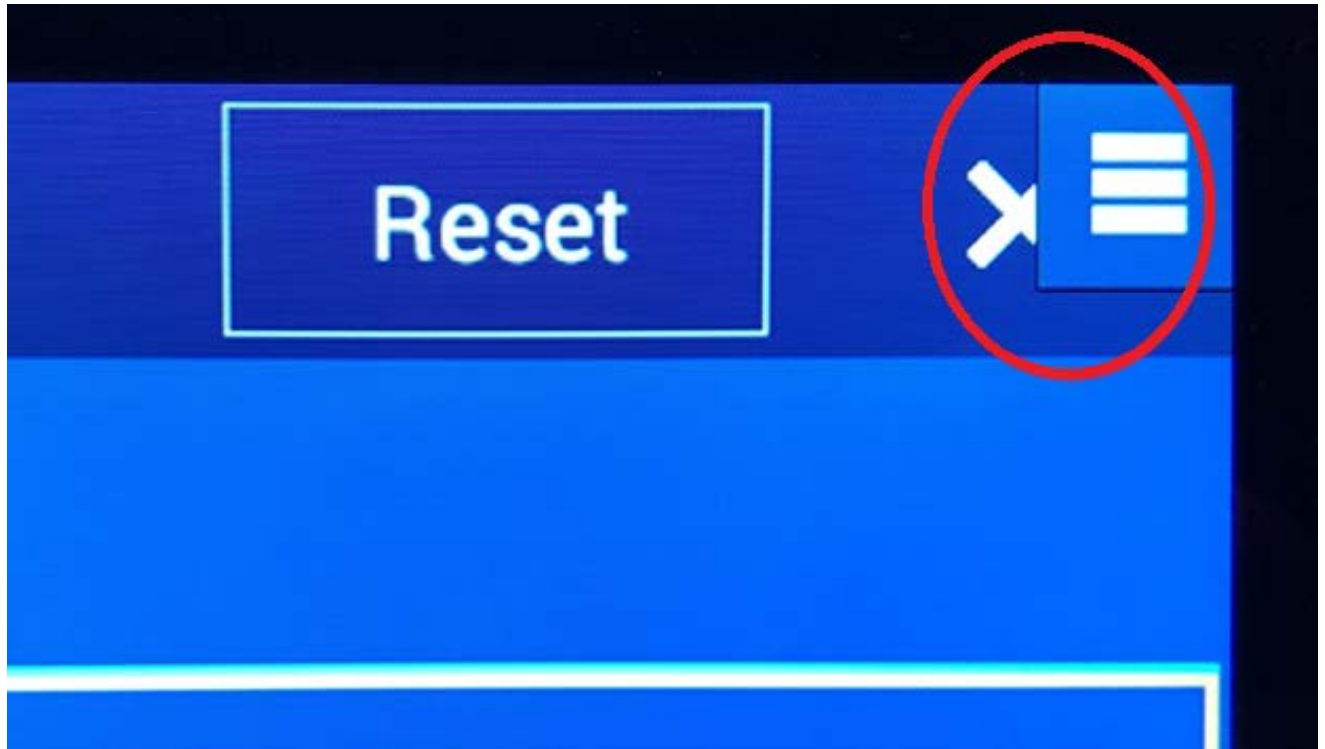


3. To gain access to the primary home key, press the 3-bar icon, then tap outside of the pop-up box to make it go away, and then touch the "Home" icon within the nine second time-period.

Example of Primary Home Key



NOTE: In some menus the 3-bar icon may make touching the X in the top right difficult. This can be fixed by pressing and holding the 3-bar icon until gold arrows appear on it. You can then drag the icon and place it where ever you find to be convenient or appealing.



REVISION 4/18/19