



NavNet Controller App


INDEX

1. New NavNet Controller App on Android™
2. Getting Started – Connection of Android™
Devices via Router
 - 2-1 Router Setting – Summary
 - 2-2 Updating Model TZX9/14/BB to v3.12
or Later
 - 2-3 Network
3. Operating NavNet Controller App
 - 3-1 Operation Screens
 - 3-2 Setting Page
 - 3-3 Limitations and Notes



1. New NavNet Controller App on Android™

The New **NavNet Controller** app, available on Google Play from September 1, 2014 and later offers a wireless remote control option for the NavNet TZtouch models TZT9/14/BB via an Android™ device.

NavNet Controller	
Descriptions	Remote controller for TZT9/14/BB: The TZT9/14/BB can be wirelessly controlled with scroll pad, cursor pad, and some dedicated keys on the app.
Icon	
Tested Device (OS Version)	Samsung Galaxy S III (GT-I9300, Android™ 4.1.2)
	Samsung GalaxyTab3-7' (SM-T210, Android™ 4.1.2)
	Xperia S (LT26i, Android™ 4.0.4)
	Nexus7 (ME370T, Android™ 4.3)
Language	English and Japanese
Price	Free of charge

Note:

(1) The NavNet Controller app may not work properly on some Android™ devices.

(2) The iOS version of the app is planned to be launched in Oct. 2014.

Tips – Compatible Apps by Device as of September 1, 2014

Currently available NavNet apps are compatible with the following devices.

(Ref. FSB14-0007: Apps Guide)

Apps	iOS Devices	Android™ Devices
	<i>Network with TZT9/14/BB built-in wireless LAN or an Ethernet router</i>	<i>Network with an Ethernet router only</i>
NavNet Remote	iPad, iPhone, and iPod touch	Tested with Samsung Galaxy S III (GT-I9300, Android™ 4.1.2), Samsung GalaxyTab3-7' (SM-T210, Android™ 4.1.2), Xperia S (LT26i, Android™ 4.0.4), Nexus7 (ME370T, Android™ 4.3), etc. * (1)
NavNet Viewer		
NavNet Controller	Planned to be launched in Oct. 2014	

Note:

* (1) Apps may not work properly on some Android™ devices.

2. Getting Started – Connection of Android™ Devices via Router



The TZT9/14/BB built-in wireless LAN supports iOS devices only. **Android™ devices should be networked via an Ethernet router.** This section describes the overview of the network setting including a router.

2-1 Router Setting – Summary

Set the router as follows and connect it to the TZT9/14/BB network.

Setting 1 (Mandatory)	Fix the IP address of a router to 192.168.252.2 to 192.168.252.99 (e.g. 192.168.252. 2).
Setting 2 (Mandatory)	Set the Subnet Mask to 255.255.255.0 .
Setting 3 (Mandatory)	Activate the DHCP server function.
Setting 4 (Mandatory)	Set the security mode to other than Open or Disabled .
Setting 5 (Recommended)	Set the wireless channel to Auto , instead of fixing to one channel. * (1)
Setting 6 (Recommended)	Rename the router's SSID to easily find the router with an iOS device. ** (2)
Setting 7 (If necessary)	Change the router's Password. ** (2)

Note:

* (1) Setting the router's wireless channel to Auto will have an effect on avoiding signal conflicts between many wireless devices.

** (2) The original SSID and password are usually stated on a sticker pasted on a router.

For details on setting, see the **Sales Bulletin FSB15-0008**.

2-2 Updating Model TZT9/14/BB to v3.12 or Later

To utilize the NavNet Controller app, the **TZT9/14/BB** program should be **v3.12 or later**, which is optimized to accept control commands from the app.

2-3 Network

1. After the router is properly set, connect the router to the TZT9/14/BB network.
2. Wirelessly connect an Android™ device to the router.
3. Open the NavNet Controller app.

Now, you are ready to wirelessly operate the TZT9/14/BB with the app.

Note:

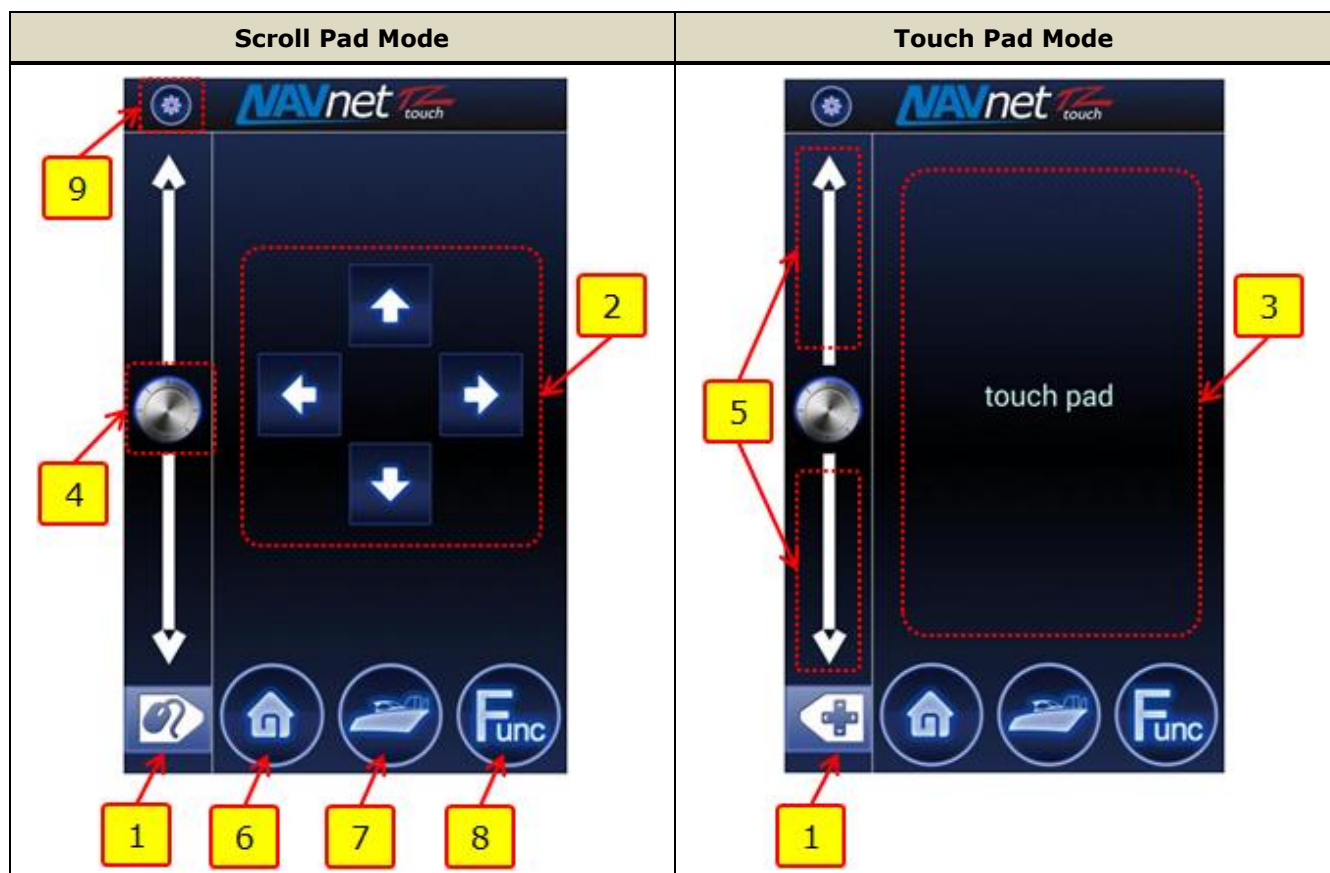
A maximum of five (5) devices can be networked to one (1) TZT9/14/BB for the NavNet Controller app.



3. Operating NavNet Controller App

3-1 Operation Screens

The NavNet Controller app has two (2) main screens for operation: **scroll pad** and **touch pad** modes. Each screen mode has dedicated operation icons.



No	Icons/Pad	Descriptions	Comparison with Operation by...	
			MCU-002	Mouse
1	Mode Selection	Switches the screen mode between scroll pad and touch pad	[CURS/SCRL] key	-
2	Scroll Pad	Scrolls the Plotter, Radar, Fish Finder screens	Joystick operation under scroll mode	Drag
3	Touch Pad	Moves the cursor in any direction	Joystick operation under cursor mode	Moving the cursor
4	RotoKey™ (Press)	Acts as pressing the RotoKey™	[ENT] key	Pressing the wheel
5	Slider Bar	Acts as rotating the RotoKey™ for zooming in/out of the screen, etc.	[-/▲ (UP)] key [+/▼ (DOWN)] key	Rotating the wheel
6	Home	Opens the Home page	[Home] key	-
7	Center/Cancel	Acts as tapping [Center Vessel] (Plotter), [Center Radar] (Radar), and [Cancel History] (Fish Finder) icons Acts as cancel function	[Center] key [Cancel] key	-
8	Function	Acts as Function Gesture	[FUNC] key	Right-click
9	Setting	Opens the setting page	-	-

Note:

(1) The screen layout is fixed to **portrait only.**

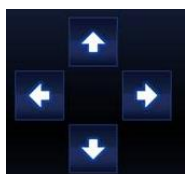
(2) As described on Section 2-2, ensure to update the TZT9/14/BB to **v3.12 or later to utilize all the control icons of the NavNet Controller app above.**

(1) Mode Selection



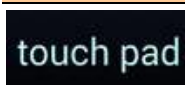
These icons switch the screen mode between scroll pad and touch pad. Depending on the required operation, tap these icons.

(2) Scroll Pad


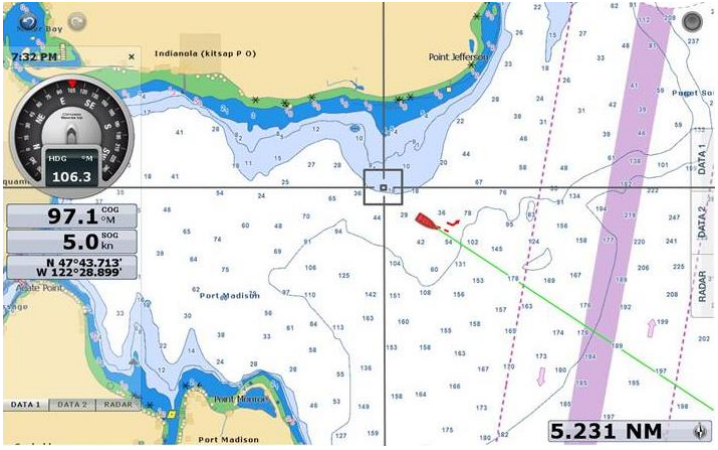


On the scroll pad mode, these arrow keys can scroll charts, offset the Radar screen, and scroll back and shift the Fish Finder screen.

(3) Touch Pad



On the touch pad mode, you can move the cursor with your finger and tap the pad as a single tap on the TZT9/14/BB screen. **For touch pad operation, we recommend that the **cross cursor** setting be activated on the TZT9/14/BB.**

Menu Setting	Cross Cursor on Screen
 <p>[Menu] – [General] – [Cross Cursor] – [ON] (Cross cursor speed setting is active for the MCU-002 and USB-mouse operation only.)</p>	 <p>While the touch pad is in operation, the gray, thick cross cursor appears on the screen.</p>

Notes:

- (1) The touch pad is compatible with single touch operation only. Multi touch operation is not available.
- (2) The touch pad is not compatible with long-press.

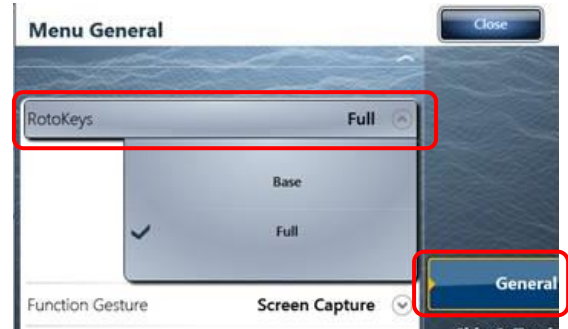
(4) RotoKey™ (Push Only)



This icon functions in the same way as pressing the RotoKey™.

Note:

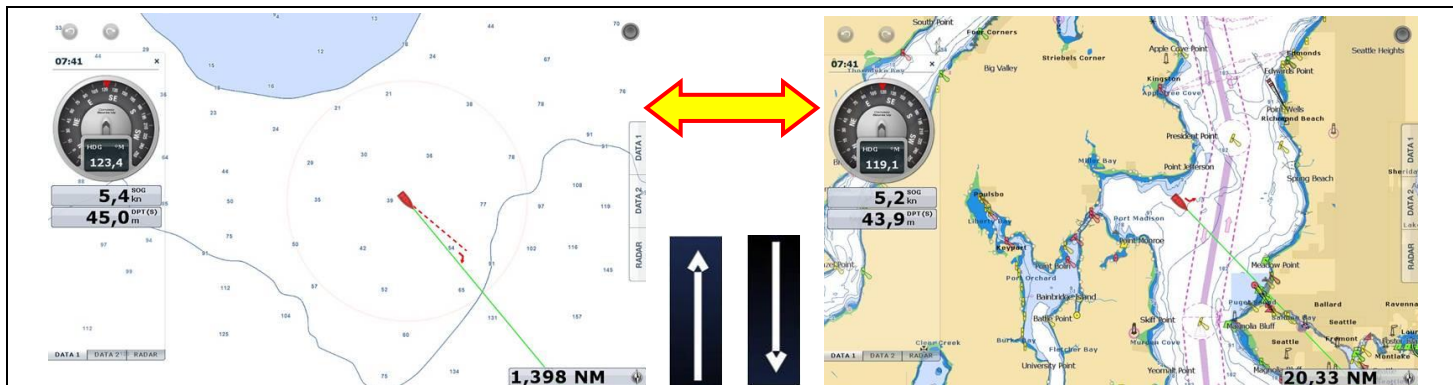
This icon is not compatible with long-press. We recommend that the TZT9/14/BB be set to show full RotoKey™ menus. Access [Menu] – [General] – [RotoKeys] and set to **[Full]** (default: [Base]).



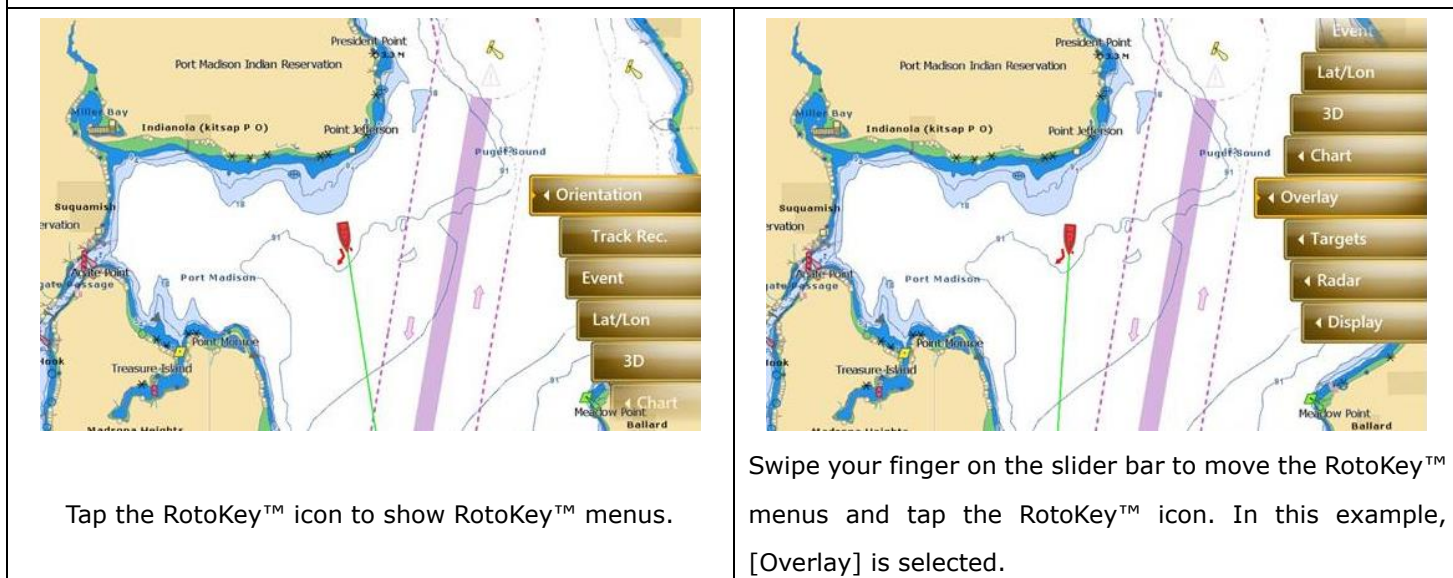
(5) Slider Bar



The slider bar works in the same way as rotating the RotoKey™. In combination with the RotoKey™ icon and slider bar, you can operate the TZT9/14/BB as follows.



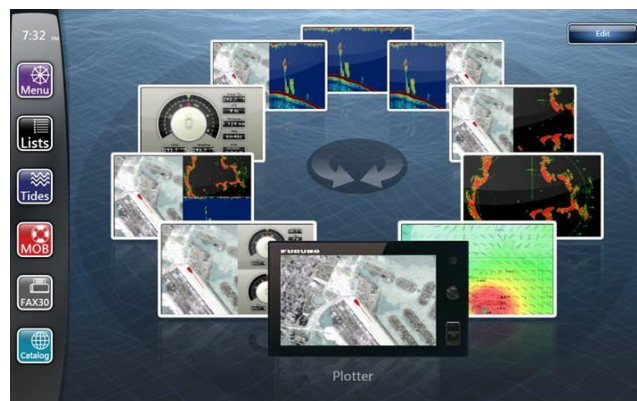
Swipe your finger upwards/downwards on the slider will zoom in/out of the Plotter and Radar screens and changes the Fish Finder ranges.



(6) Home



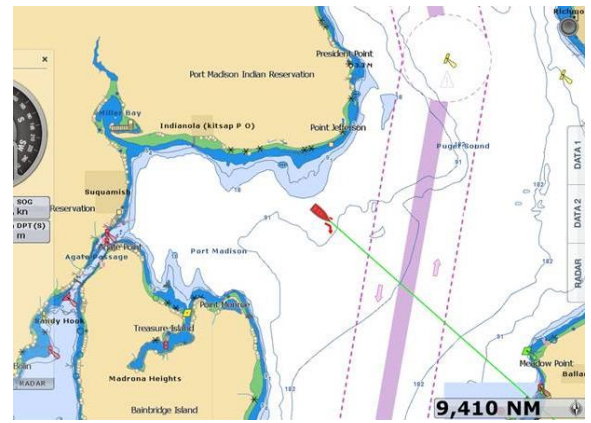
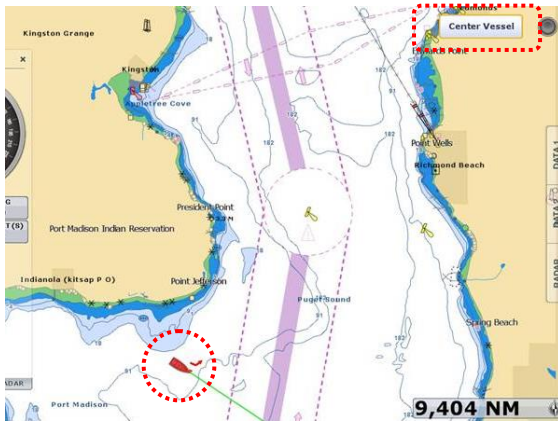
This icon opens the Home page on the TZT9/14/BB. After tapping this icon, the screen mode of the app will change to the touch pad mode, so that you can operate the TZT9/14/BB Home page, such as tapping on the [Menu] with the touch pad. To open a page, select it with the slider bar and tap the RotoKey™ icon or place the cursor on the required page and tap on the touch pad.



(7) Center/Cancel



This icon sets the own vessel to the center on the screen of Plotter and Radar presentations and cancels the echo history of Fish Finder.



This icon also works in the same way as the MCU-002 [**CANCEL**] key for the following functions.

- (1) Closes Home/Menu/Lists/Tides/Catalog pages, RotoKey™ and contextual menus, and dialog boxes
- (2) Mutes alarm sound
- (3) Ends action such as creating a route and moving a point

Note: No “Undo” function is available for this action.

(8) Function



This icon activates the function set in [Menu] – [General] – [**Function Gesture**] on the TZT9/14/BB. In the following example, the Function Gesture is assigned to [Event]. The [**FUNC**] key opens the event window.



You can select an event mark on the TZT9/14/BB with the slider bar and enter it with the RotoKey™ icon, or place the cursor on a required event mark and tap on the touch pad.


(9) Setting



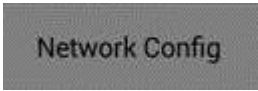
This icon opens the setting page of the app. For details on settings, see **Section 3-2**.

3-2 Setting Page

The setting page guides you to the following options.

Setting Page	No	Keys	Descriptions
	(1)	Network Config	Shows the IP address/(es) of TZT9/14/BB units on the network to connect the device to one of the selected TZT9/14/BB units
	(2)	Application Config	Switches the position of the slider bar between left edge and right edge of the screen
	(3)	Power / Brilliance	Shows the brilliance control window of the TZT9/14/BB
	(4)	About	Shows the app version and end user license agreement

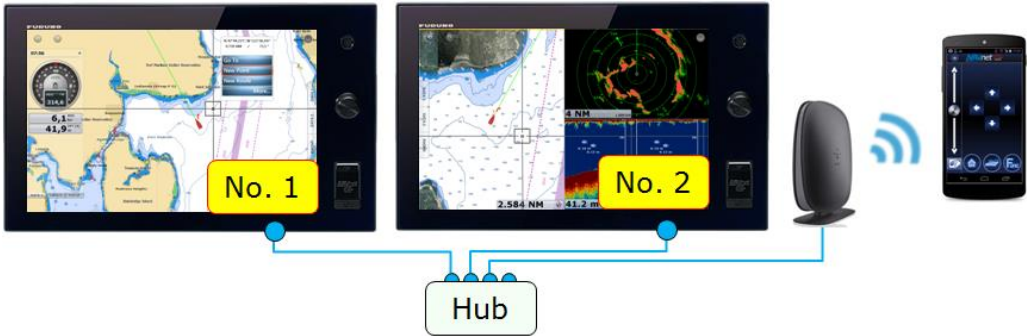
(1) Network Configuration



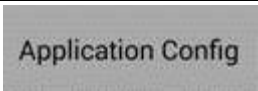
This page allows you to see available TZT9/14/BB units on the network.



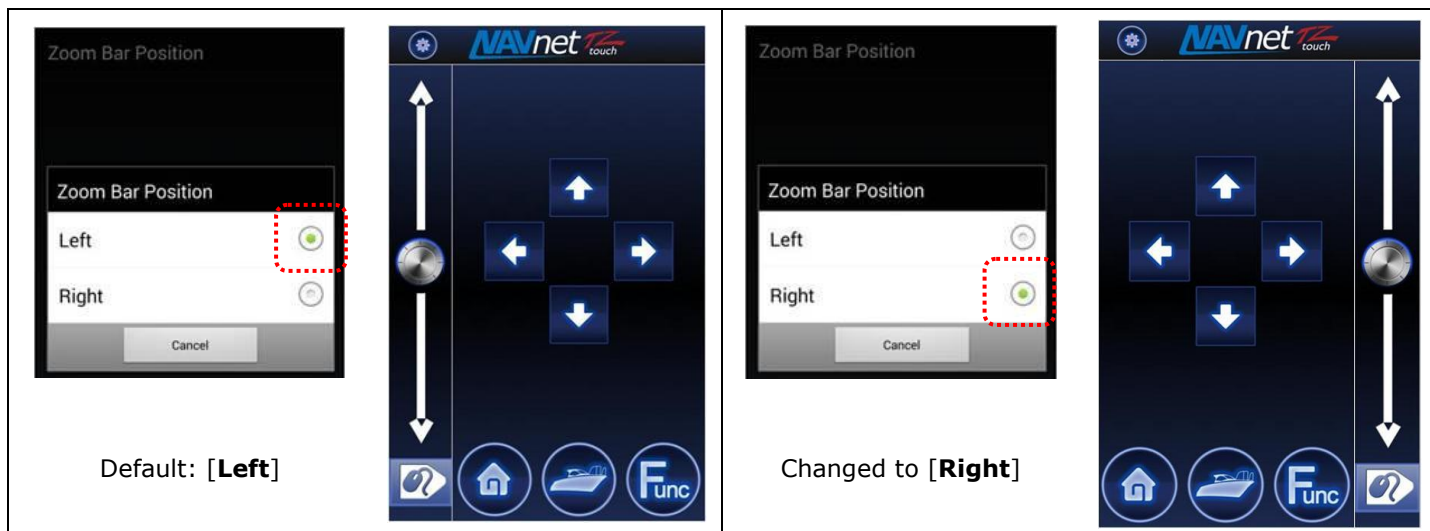
As shown at left, the IP address(es) of TZT9/14/BB units on the network will be shown on the page. In this example, two (2) sets of TZT9/14/BB are networked. On the Network Config page, select either of the IP addresses to wirelessly access and operate that TZT9/14/BB.



(2) Application Configuration



This page allows you to switch the position of the slider bar between the left and right edge of the screen. In default, the slider bar is at the left edge. To change the position to the right edge, tap [**Zoom Bar Position**] and select [Right].



(3) Power/Brilliance

Power / Brilliance

This page opens the brilliance control window.

After the brilliance control window opens, the screen changes to the touch pad mode. Adjust the brilliance with the slider bar or cursor and close the window with the Center/Cancel icon. To turn off the unit, place the cursor on [Power Off This Device] or [Power Off Network] and tap on the touch pad.



(4) About Page

About

This page shows the program version of the app and end user license agreement.

Tips

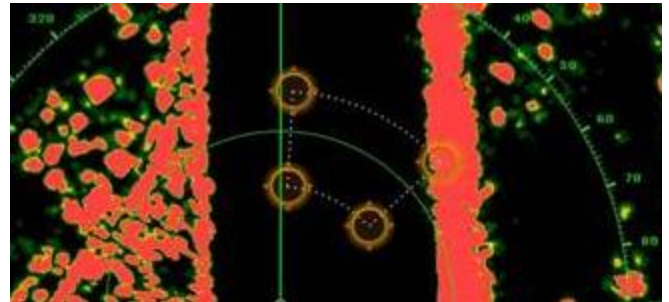


The back icon [↶] available on Android™ devices can turn from the current page to the previous page and close the app from the top page.

3-3 Limitations and Notes

(1) Limitation in Drag by Joystick

The touch pad has **NO "drag" function**. As an example, the guard zone setting of Radar, which requires to be adjusted by drag, will not be available with the NavNet Controller app. This operation should be made by touch on the TZT9/14/BB or with a generic mouse/trackball unit.



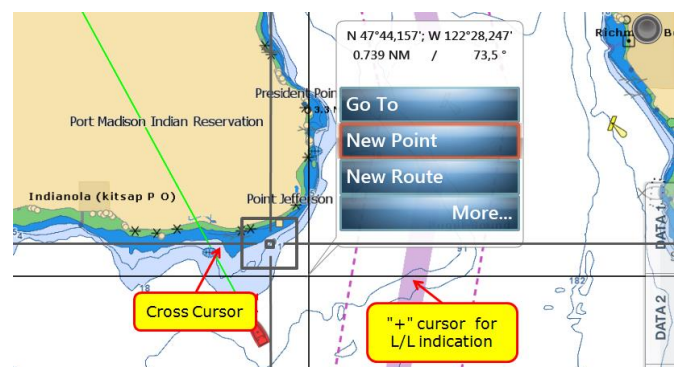
(2) Limitation in 3D Mode – Pan/Tilt

You can turn the screen mode into the 3D mode by selecting [3D Mode] from the contextual menu. However, **you cannot pan/tilt the chart with the app operation** because sliding the TZT9/14/BB screen with two fingers is the only way to pan/tilt. The chart in 3D is always in the default angle as shown at right. If you have panned/tilted the chart with two fingers before, the screen will remain at the previously-set angle.



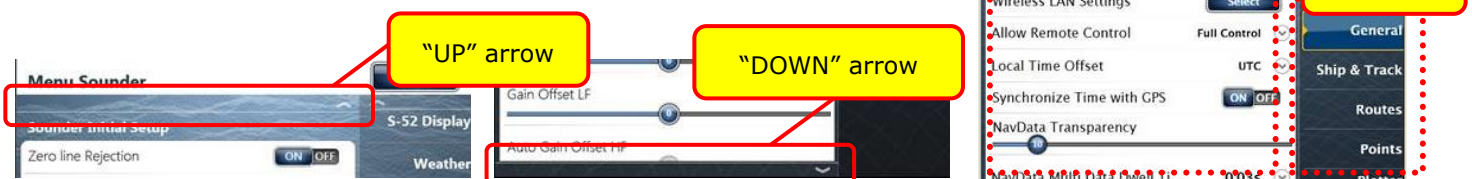
(3) Note on Cross Cursor Position

The cross cursor position will not appear on the data box. To show the cursor position, tap on the touch pad and show popup windows as you would tap on the TZT9/14/BB screen.



(4) Note on Menu – Second Layer

The first layer of the Menu can also be scrolled with the slider bar, but the second layer cannot. We recommend that the arrow icons at the top and bottom of the layer be pressed on the touch pad to scroll the second layer.



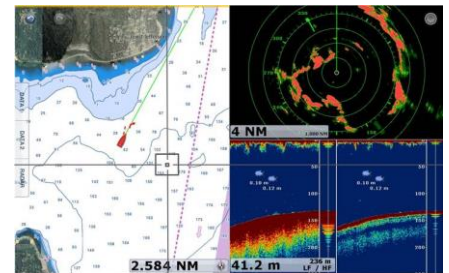
(5) Note on Virtual Keyboard

To enter characters and numbers with a virtual keyboard, use the touch pad.
Place the cursor on a required key and tap on the touch pad.



(6) Note on Active Window

In the split screen mode, even if you place the cursor on a different screen, the window will not be active. Tap on the touch pad as you would tap on the TZT9/14/BB screen to activate it.



--- END ---

- Android™ is registered trademarks or trademarks of Google Inc.
- iPad, iPhone, and iPod touch are trademarks of Apple Inc. All brand and product names are registered trademarks, trademarks or service marks of their respective holders.