

TZT-3KP-F3D

TZT3 DFF3D KP CONNECTION KIT

Kit consists of the following:

- 1ea 000-163-191 (Screw/Washer HD M4X10)
- 1ea 000-177-248-10 (XDCR Gland)
- 1ea 000-134-410 EMI Core
- 1ea SG3-000-001-99 (5M Key Pulse Cable)
- 1ea Plastic Cable Clamp



Installing TZT3 DFF3D KP CONNECTION KIT

1. Remove the plastic cover and unfasten 4 phillips screws to remove metal shield cover.



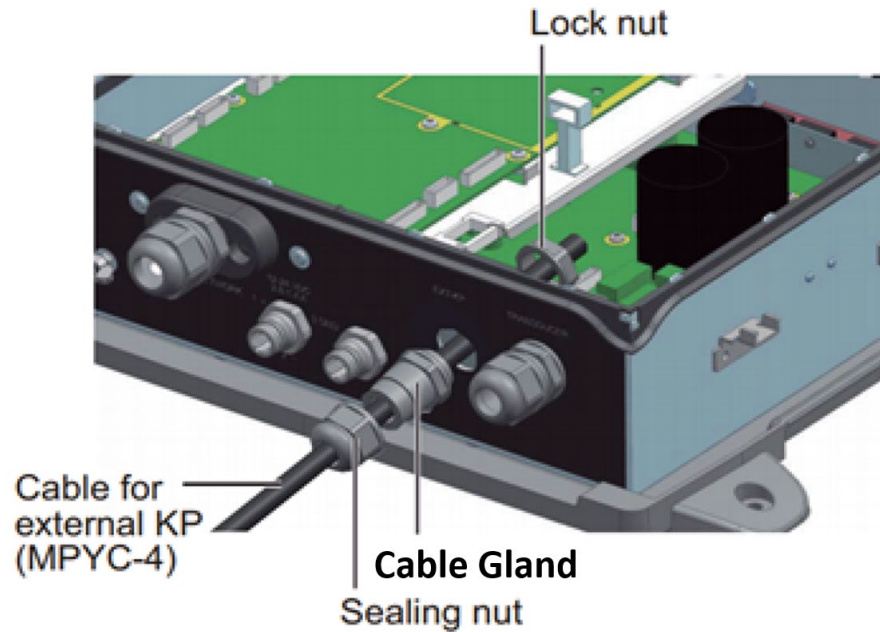
2. Detach the protective sheet from the location for the external KP.

Protective sheet

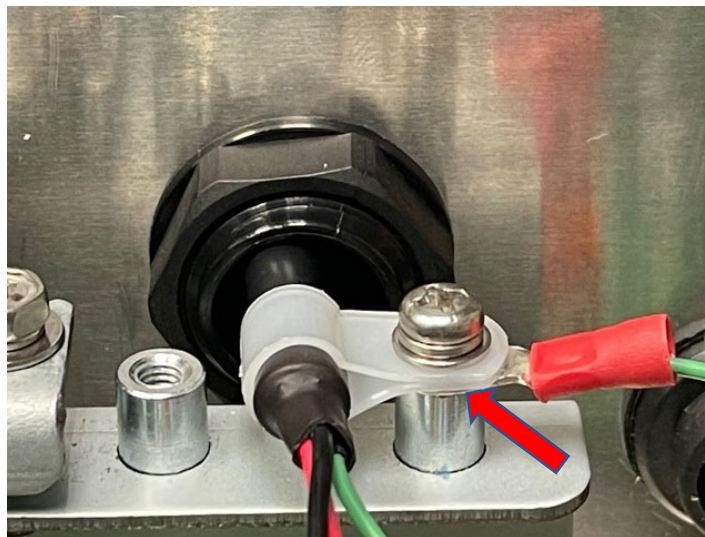


3. Do the following:

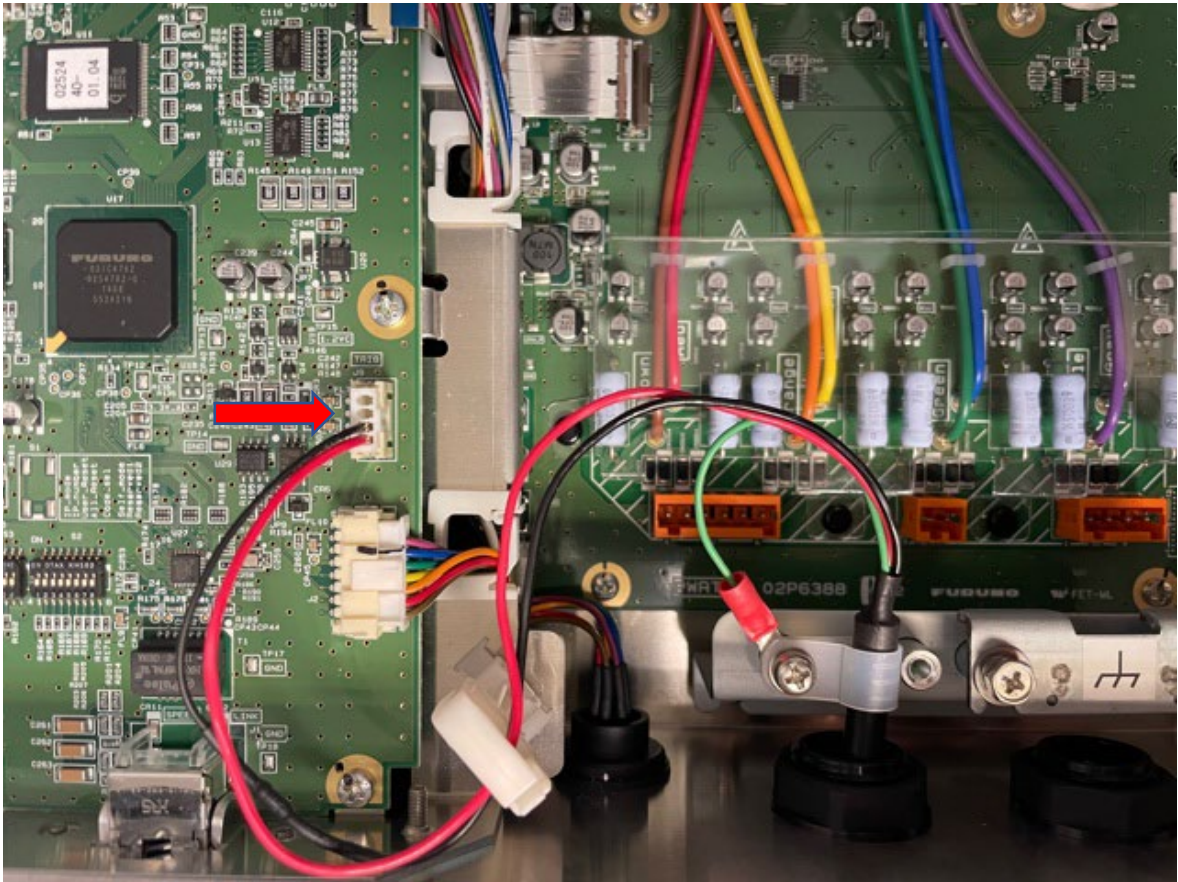
- 1) Unfasten the sealing nut and lock nut from the supplied cable gland. As shown below, pass the cable through the sealing nut, cable gland, hole in the network fish finder and the lock nut.



- 2) Tighten the Lock nut on the back of the cable gland.
- 3) Position the cable so the vinyl sheath lies in the cable clamp, then use the supplied cable clamp and set screw to secure the cable **ensuring that the ground wire contacts the chassis (below plastic cable clamp)** then tighten down the screw. Now tighten the sealing nut of the cable gland.



- 4) Pass the cable through white plastic cable holder, then connect the cable to J9 on the PWRTX board.



- 5) Attach the supplied EMI core to KP cable, approx. 10mm from the cable gland.



- 6) Attach the shield cover and replace the plastic cover.

Connecting DFF3D KP Cable Kit to TZT3 MFD (TZT12F,16F and 19F)

1. Connect DFF3D KP Cable to the TZT12F,16F, 19F pigtail cable labeled "DI-FFAMP". Align the keyways, twist the locking collar of the DFF3D KP cable connector until it is locked in place. If the connection is in a wet environment, seal up the connection with electrical tape and then wrap it in vulcanizing tape.



DI-FFAMP CONN Keyway DFF3D KP CONN Keyway

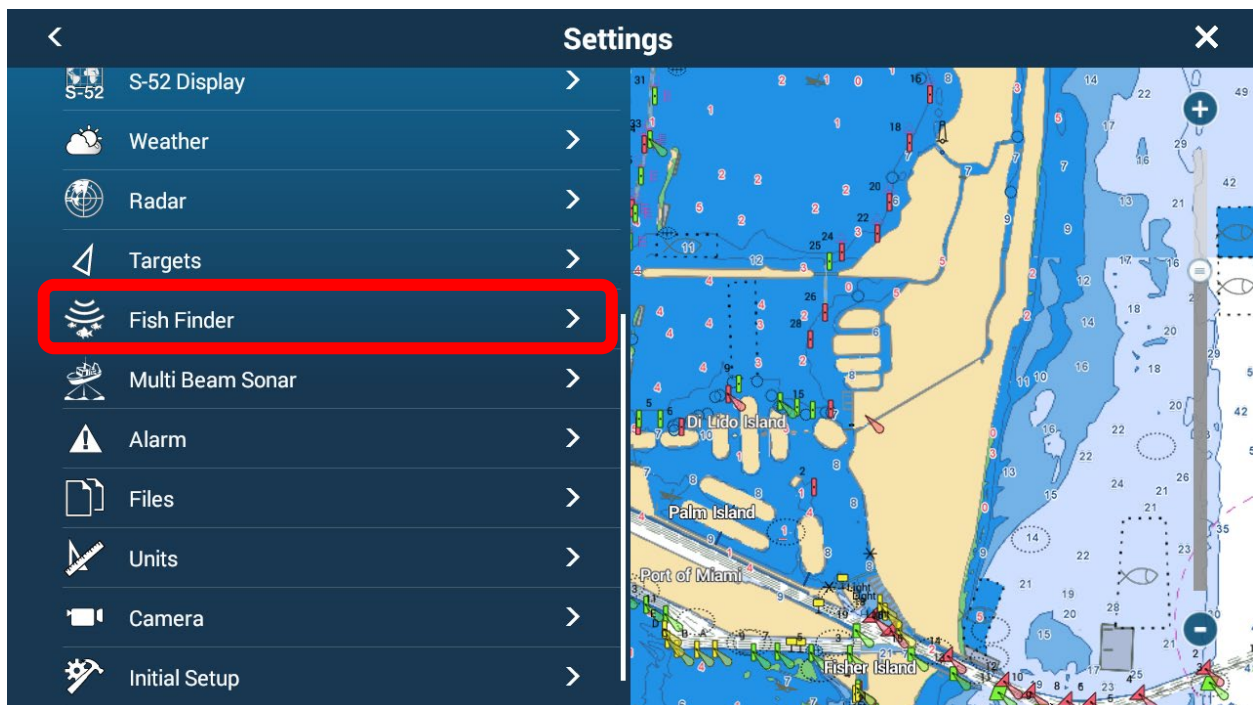


TZT3 MFD settings (TZT12F,16F and 19F)

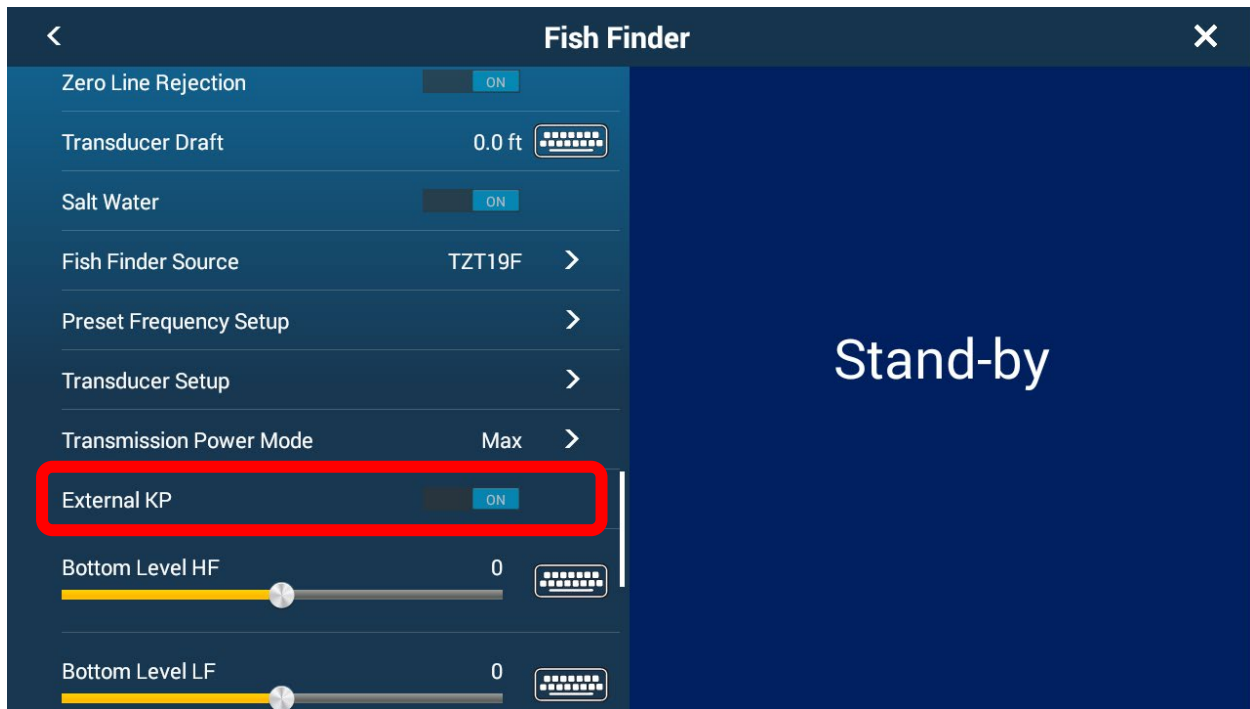
1. Select **HOME** then **SETTINGS**



2. Select **INITIAL SETUP**, then **Fish Finder**



3. Scroll down in the Fish Finder menu to **EXTERNAL KP** and set to **ON**



Note: Utilizing External KP will slow down the Transmission Rate of the Internal Sounder as well as the DFF3D.