

MaxSea Time Zero v 1.9

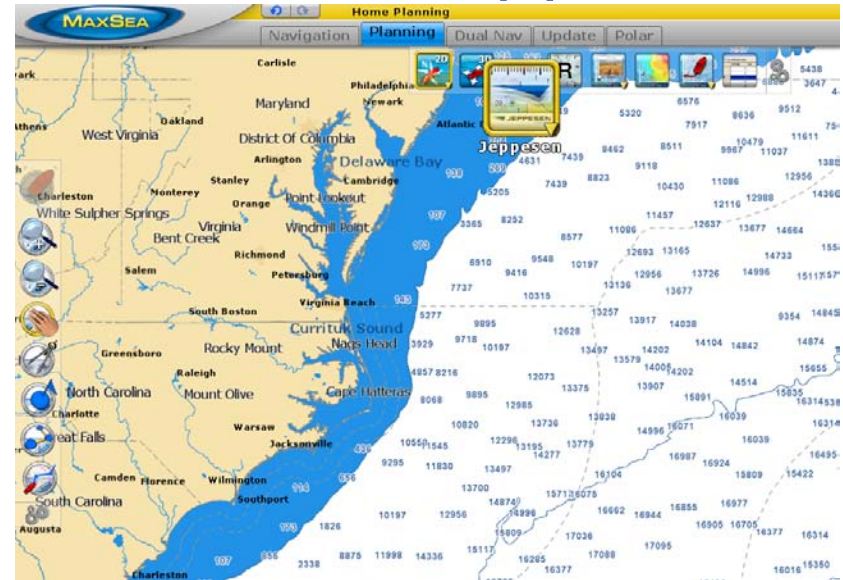
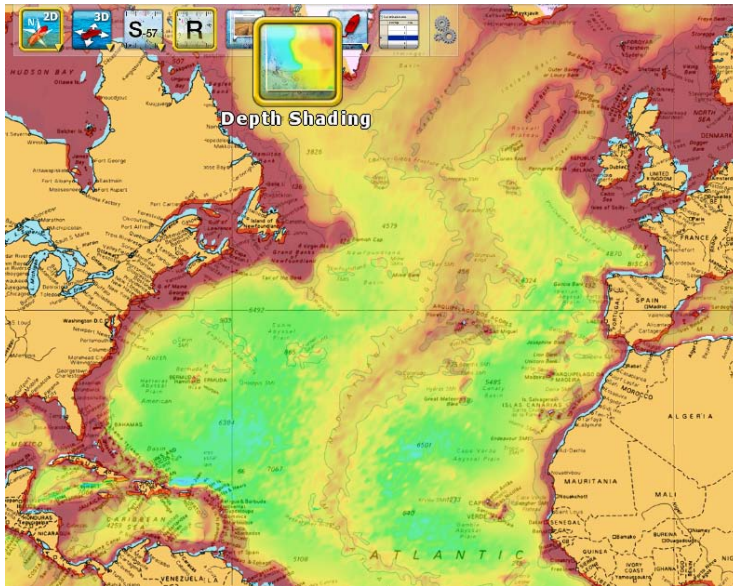
New Features



MAXSEA

New DVD Installer

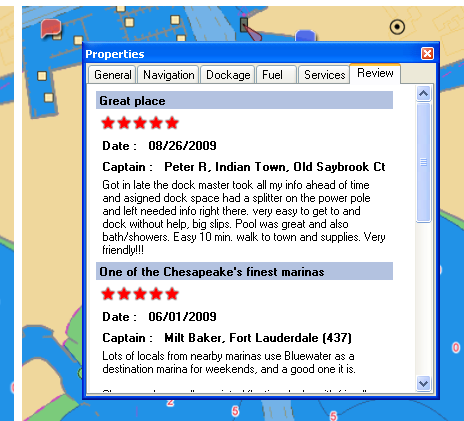
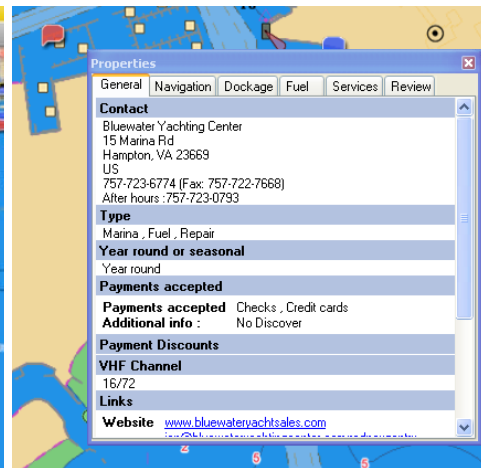
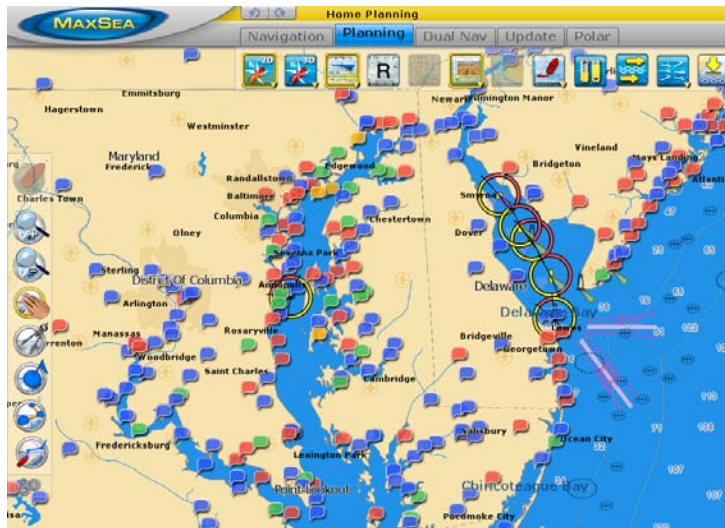
- Time Zero V1.9 will now ship on a DVD
- The DVD contains the program software and World Base Charts (3D and Jeppesen)



- For Internet download, a “light” installer is also available (containing only the software)

New: Integration with ActiveCaptain

- Time Zero 1.9 embeds the ActiveCaptain database allowing access to over 50,000 Points of Interests (Marinas, Anchorage,...)



- Registering as an "ActiveCaptain" User (free registration) will additionally allow access to Marina Reviews and Real Time POI Updates

New: Compatible with AXIS IP Cameras

- AXIS IP Cameras (or AXIS Video Servers) can be connected to the computer (via Ethernet) and displayed in MaxSea TZ Explorer

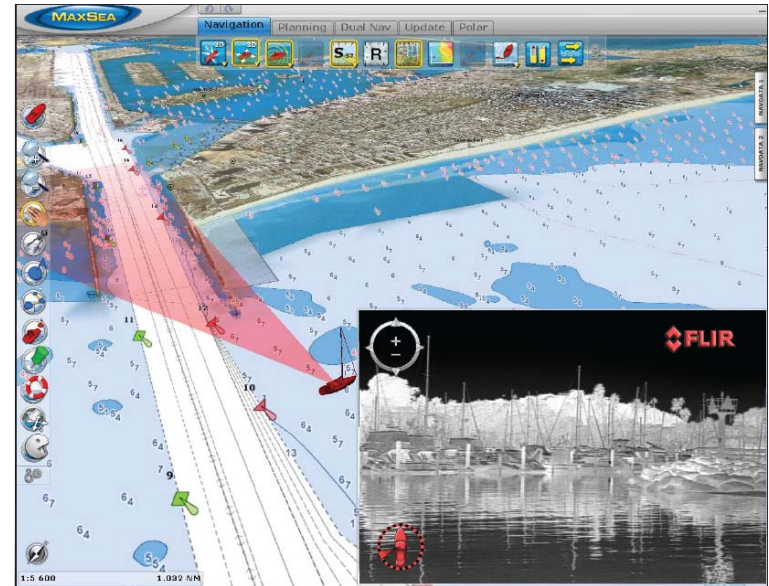
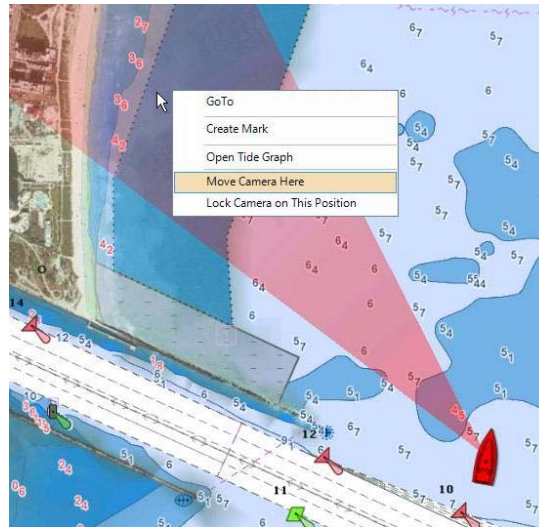


- Display the Camera in a NavData window or in its own window over the chart



New: FLIR M-Series Control

- MaxSea TimeZero Explorer can control FLIR M-Series Thermal Cameras



- Pan/Tilt the camera manually or lock on an Object or ARPA Target directly from the chart
- Use an Axis Video server (optional) to bring the video in MaxSea



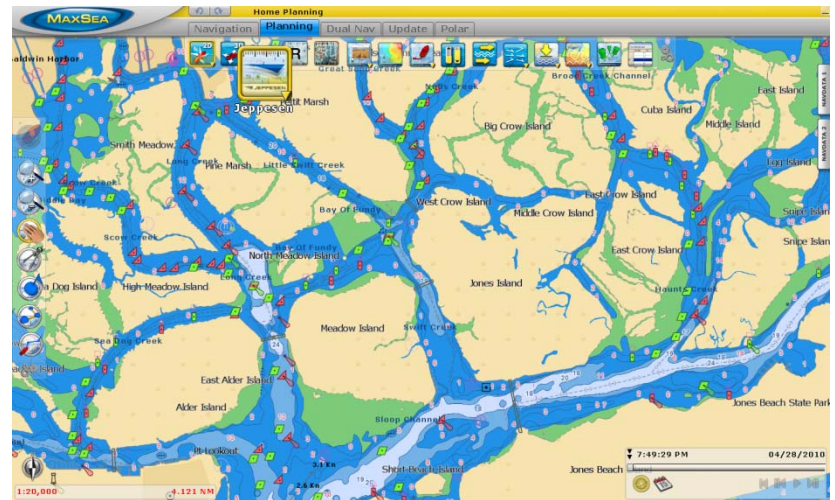
New: Furuno 2XX7 Radar Compatibility

- MaxSea TimeZero Explorer is directly compatible with the Furuno 2XX7 series Radar



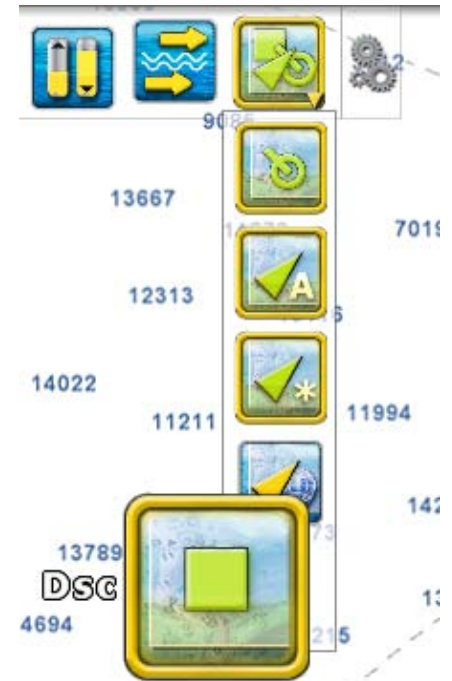
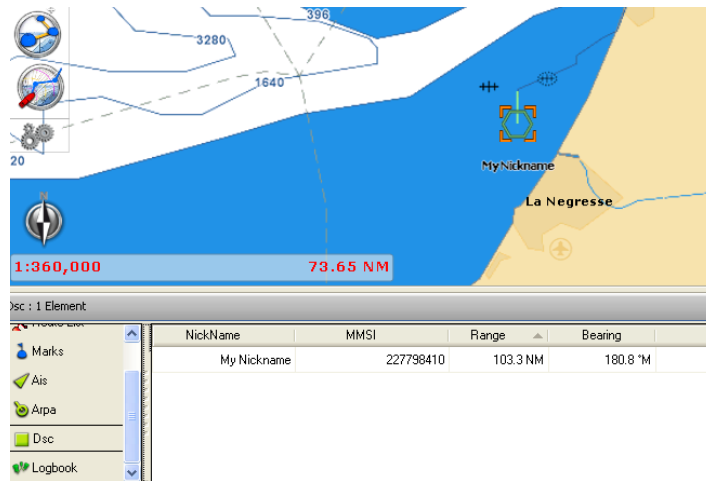
New: Compatible with MM3D C-Map by Jeppesen Charts

- Mapmedia just introduced new MM3D charts based upon the Jeppesen (C-MAP) data. Time Zero v1.9 allows the user to switch back and forth between any installed vector charts (Navionics, S57, Jeppesen)



New: Compatible with DSC

- MaxSea can be connected to a DSC Radio and display on the chart Position Request and Distress Call
- A "Buddy List" can be set to replace MMSI on the chart with a customized Nickname



Misc. Improvements:

- Vector chart rendering has been improved (for Jeppesen, Navionics or HO-S57 vector charts)
- The instrument Auto Configuration process has been improved (GPS, Sounder, AIS, NavNet,...)
- AIS Targets are interpolated every second for an up to date redraw on the chart
- The Manual Mark Input Window (input by Lat/Long) has been improved to accept multiple formats
- TD offsets are now available
- Tidal Current Arrows change size dynamically
- New Pop-up information on Waypoint (allowing quick access to TTG, ETA and CTS from the chart)

How to update?

- The Time Zero v1.9 Update is free for all MaxSea TimeZero Customers!
- Simply request a v1.9 DVD or download the full or light version from the www.maxsea.com website (login to "My MaxSea -> Download")



Title	Description	Category	
MaxSea Time Zero	Full Version de MaxSea Time Zero v1.9 Size : 551 MB	Full Version	Download