



FURUNO

FURUNO U.S.A., INC.

4400 N.W. Pacific Rim Blvd, Camas, Washington 98607-9408, U.S.A.
Phone: 360-834-9300 Fax: 360-834-9400
www.FurunoUSA.com

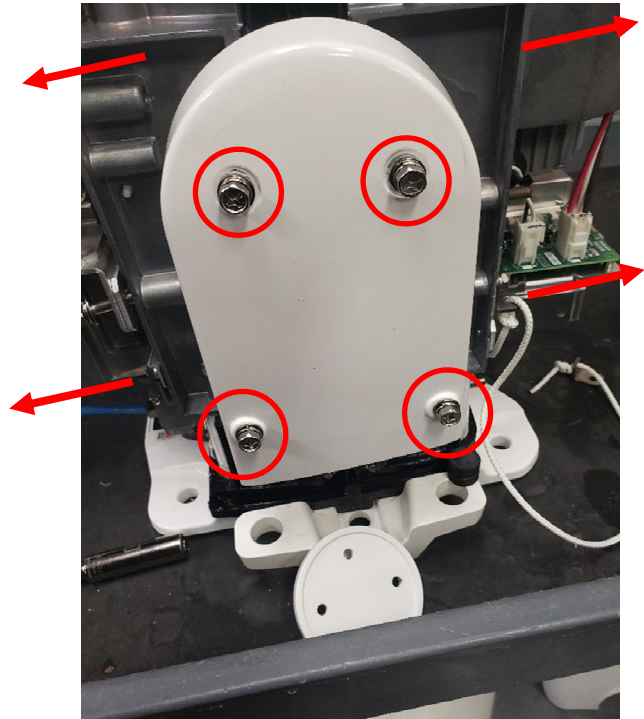


HOW TO FIT THE FAR2XX8 AND FAR3000 SERIES BOTTOM ENTRY CABLE KIT

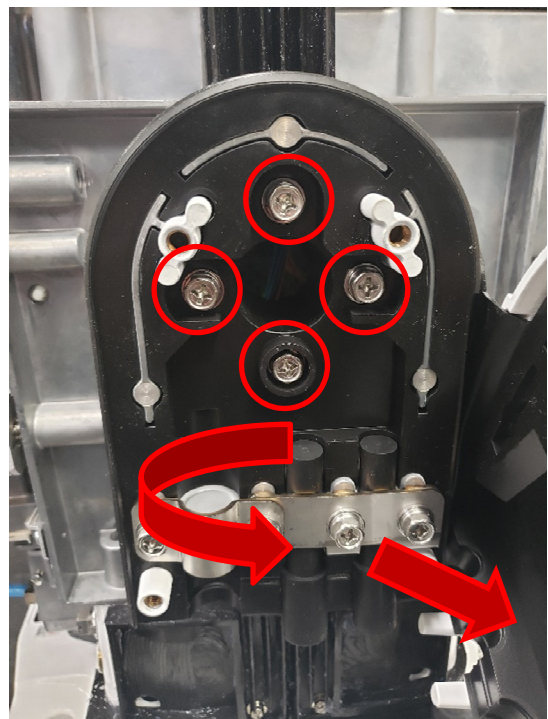
A GUIDE TO ATTACHING THE BOTTOM ENTRY CABLE KIT (F3K-CBL-BTM-KIT) TO THE
FAR2XX8 AND FAR3000 X-BAND GEARBOX

PREPARE THE GEARBOX

- Remove both halves of the shell from the gearbox.
- Remove the four side cover screws and save them.
- Prepare F3K-CBL-BTM-KIT.



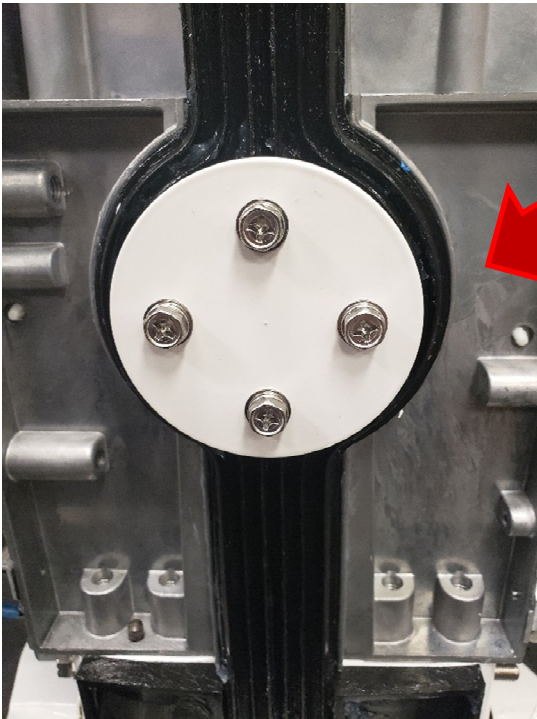
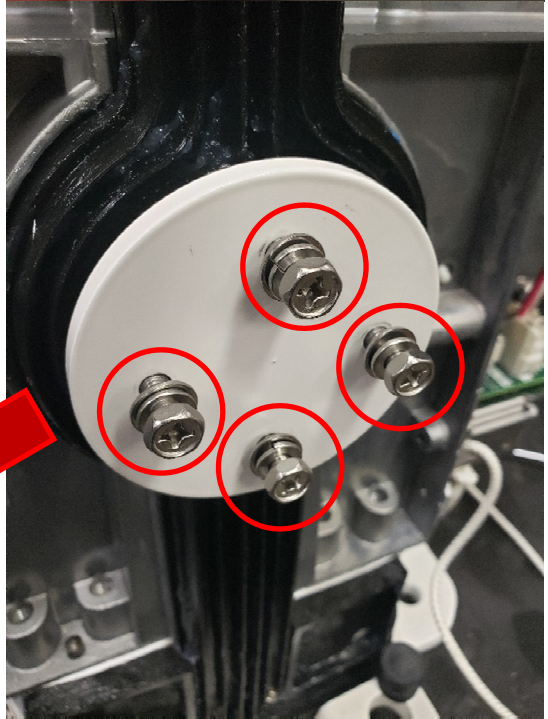
- Open the flap.
- Remove the four securing screws.
- Remove the entire cover assembly.



- Apply silicon sealant to the back of the blanking disc.

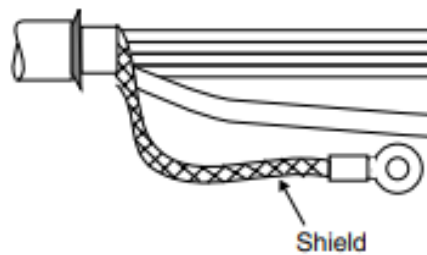


- Meet the blanking disc to the gearbox chassis and thread the screws into the threaded holes.
- Tighten the screws.
- Reattach the covers.



BOTTOM CABLE ACCESS

Slide a washer, and fold back armor.
Slide a washer, rubber gasket,
washer, and clamping ring in order.
Cut the armor around the washer so
it is level with the washer.



Nip the armor between two washers, and trim the excess armor from around washers.
And then pass the shield between the clamping ring and the washer as shown below.
Fasten the clamping ring with the screws.

