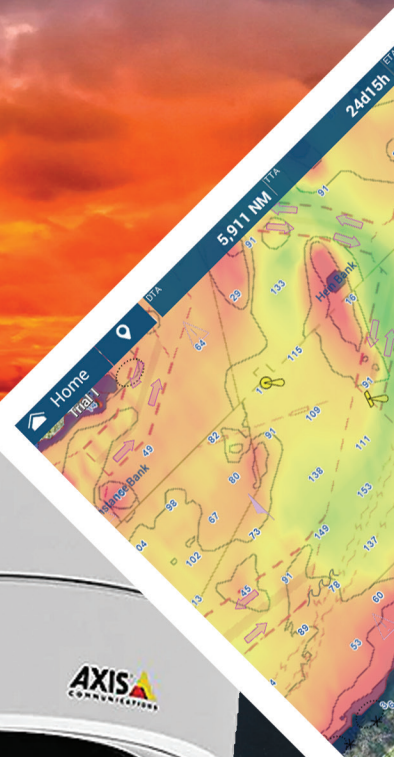
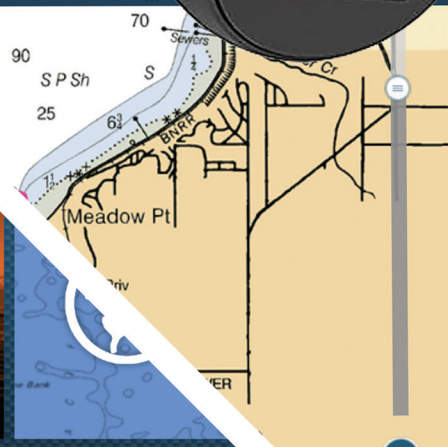
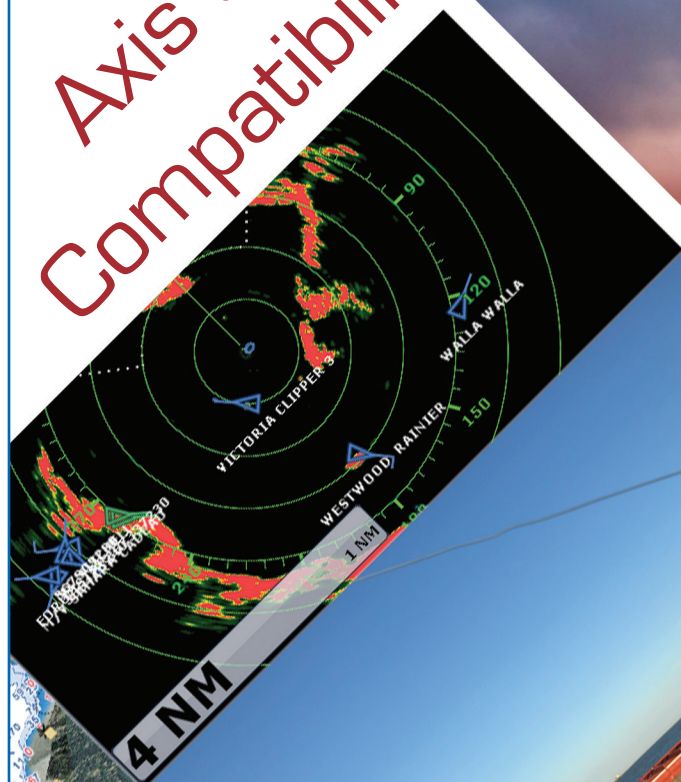


# Axis Camera Compatibility Guide

# NAVnet

*TZ* touch *TZ2* touch *TZ3* touch



# AXIS Camera Compatibility

For TZT, TZT2 and TZT3 Systems

**Compatibility is subject to change without notice**

AXIS Communications (<https://www.axis.com/en-us>) continues to upgrade their selection of network cameras and video encoders. Furuno USA has tested the following models successfully. Other unlisted models might be compatible. This list is updated as we get the opportunity to test.

## Current Models (Tested)

---

### Camera

M55254-E



<https://www.axis.com/products/axis-m5525-e>

P3265-LVE



<https://www.axis.com/products/axis-p3265-lve>

M5525-E



<https://www.axis.com/en-us/products/axis-m5525-e>

### 1-4 Channel Video Encoders (Tested)

M7104



<https://www.axis.com/en-us/products/axis-m7104>

## **Untested 1-4 channel video encoders (should work)**

M71 quad video encoder

P73 quad video encoder

## **Tested/Discontinued Models**

### **Cameras**

207	Q6115-E	M5014-V
211	P3301	P3915R
326 Fixed	P3343-VE	M1011
212PTZ	P5635-E	M5013
215PTZ	M3007-PV	M2026-LE Mk II
216PTZ	P3245-LV	M3044-V
216FD	M1011	
225FD	M5013	M3046-V
233D	M5014	

### **1-4 Channel Video Encoders**

M7014  
P7214  
Q7404  
241Q  
Q7424-R Mk II

### **Single-Channel Video Encoders**

M7001  
M7011

## **NOTES**

1. All cameras must be setup using a computer prior to installing on the boat. These procedures can be found at [https://furunousa.com/-/media/sites/furuno/document\\_library/technical\\_info/interfacing\\_and\\_installation/interfacing\\_and\\_installation/navnet\\_tztouch\\_and\\_tztouch2\\_axis\\_ip\\_camera\\_setup\\_procedures.pdf](https://furunousa.com/-/media/sites/furuno/document_library/technical_info/interfacing_and_installation/interfacing_and_installation/navnet_tztouch_and_tztouch2_axis_ip_camera_setup_procedures.pdf)
2. The most common setup mistake is to not set the login name to “**root**” and the password to “**pass**”. If these words are changed; the camera or server will **NOT** work. The second most common mistake is **not setting the subnet mask properly**.
3. Newer AXIS models require an extra step to save the settings to the camera;

the configuration file must be written to memory when changes are completed. If this is not done, the settings will not be saved, and the camera will revert to the prior saved configuration.

4. Most current AXIS network cameras should work if they support H.264 video format; allow 800x600 (SVGA) resolution setting; and compression level to be set to “30”.

5. If your AXIS model is not listed above, please ask Light Marine Tech Support about courtesy setup and testing of your “untested” Axis camera. The unlisted units can be mailed to our Camas office for this “Free” service. Free return ground shipping is also provided. This service is NOT for cameras models which have already tested and listed above.

Please contact our highly knowledgeable Technical Support Department with any questions you may have.

They can be reached by phone at 410-479-4420 or 360-834-9300

-or- via e-mail at [www.FurunoUSA.com](http://www.FurunoUSA.com) – Support – Ask a question.

Furuno USA, Inc.