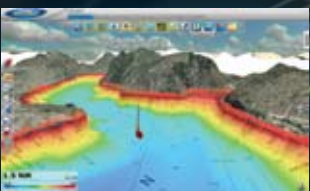


0.5 NM  
0.0 ft  
N/A  
2.614 NM



**MAXSEA** TIME ZERO

**FURUNO**

# MaxSea TimeZero Mari

MaxSea TimeZero™ advances PC Chart Plotting to the next level, allowing you to navigate in ways never before possible. An all-new graphics engine, updated tool sets and included raster and vector charts for the entire U.S. coastline make MaxSea Time Zero™ the most powerful PC navigation package you can own.



## TimeZero Technology

Thanks to TimeZero technology, your software runs and reacts instantaneously. MaxSea TimeZero operates in a fully rendered 3D environment, delivering unparalleled speed and a seamless chart plotting experience. What you see on the screen is realistically representative of what you are experiencing on the bridge of your vessel.

## Full-time 3D environment

You can switch from the traditional 2D view to the impressive 3D perspective at the click of a mouse. Equipped with powerful TimeZero technology, the new 3D engine will completely transform the way you navigate. Scroll, pan, zoom in and zoom out with a smooth, fast and seamless graphics engine. Navigating in a fully 3D environment offers you a true perspective and wider area of view around the ship, which will allow you to better plan your routes, while TimeZero technology updates the information on your screen with virtually no redraw.

## Ergonomics and performance

MaxSea TimeZero offers a completely new, innovative user interface which has been designed to be extremely intuitive and easy to use. Thanks to innovative "Work Spaces," the user interface automatically adapts to your present navigation needs. No more complicated dropdown menus to navigate! You only display the tools you need. MaxSea "Work Spaces" combine functionality with ease of use, providing for a practical and personalized navigating experience.

## Satellite Photo Fusion

The ability to fuse satellite images with the chart is a feature unique to MaxSea TimeZero. You have the ability to fuse the satellite photo directly onto your chart. Land areas (zero depth) are completely opaque, showing only high-resolution satellite photography. As the depth increases, the satellite photography becomes more transparent so you can see the chart layer underneath. You will know exactly where the shallows end and the deep water begins!

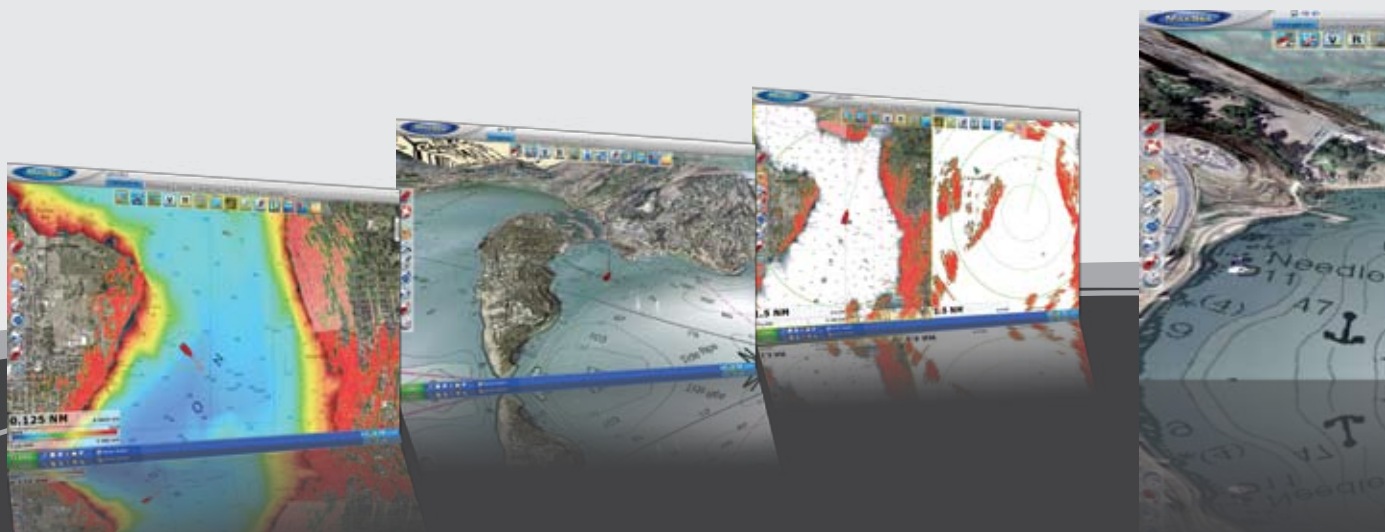
## NavNet 3D Connectivity

MaxSea TimeZero Explorer can connect to your NavNet 3D network right out of the box! You will have full control of your NavNet 3D Radar/Chart Plotter system directly from your PC. MaxSea TimeZero Explorer integrates seamlessly with NavNet 3D via Ethernet connection. Now you can access and control valuable information from your NavNet 3D network, such as Radar Overlay, Waypoints, Routes and more directly on your PC.



## Online Support

MaxSea has created an online site specifically for users of MaxSea TimeZero™. Just visit us at [www.MaxSea.com](http://www.MaxSea.com). Once you register your software, you will gain access to a variety of service and support areas, all free-of-charge. Personalized weather downloads, chart and software updates as well as practical tips, training and technical support are all available to you on-demand, 24 hours a day.



## MapMedia MM3D Vector and Raster Charts

You can begin using MaxSea TimeZero right out of the box with free, detailed raster and vector charts for the U.S. that are included on DVD. These high resolution charts are professional quality and cover the entire US Coast, including Alaska, Hawaii, Pacific Islands and Great lakes.

For enhanced charts both in the United States and worldwide, MapMedia offers a complete range of nautical charts called .mm3d, specially designed for MaxSea TimeZero. MapMedia .mm3d charts are available in Raster and/or Vector Chart formats.

MapMedia Raster Charts are based on official hydrographic office and select private sourced paper charts. MapMedia Vector Charts are based on official hydrographic office or are "Datacore by Navionics."

## Optional Modules:

### Routing Module

Teamed up with the weather forecasts and currents data, this sail routing module makes it possible to calculate the optimal sailing route based on weather constraints. With this new version of MaxSea, the Routing Module goes even further, adding the following features:

- One click comparison between several routes and animations to evaluate multiple scenarios
- Option to pass a waypoint, leaving it Port or Starboard during multi waypoint routing computation
- Waves are now used for routing computation along with wind and currents
- "Sailsets" are displayed with convenient color coding on the routing isochrones; it allows the user to analyze every route about sail change sets, which is especially useful for both racers and cruisers

## Includes MapMedia MM3D Charts!

Free, detailed raster and vector charts for the entire US Coast, including Alaska, Hawaii, Pacific Islands and Great lakes.



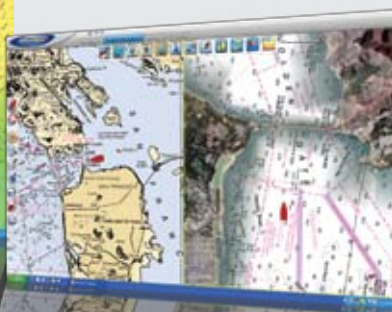
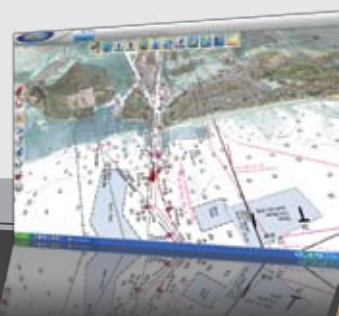
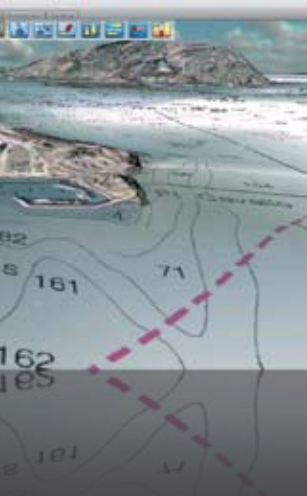
Navigate with official hi-resolution vector or raster charts in a traditional top-down, 2D view...



Switch to an amazingly accurate 3D view of the same official charts...



Turn on Satellite Photo Fusion so that land areas are rendered with hi-resolution satellite photography!



## MaxSea TimeZero Features:

Standard Features:	TimeZero Navigator	TimeZero Explorer
Seamless Electronic Chart Display	•	•
Multiple Chart Compatibility: Raster, Vector, Satellite Photo	•	•
North Up/ Course Up / Head Up mode	•	•
Day / Dusk / Night Vision	•	•
Unlimited Waypoints and Routes	•	•
Loran TD Display and Input	•	•
Active and Historic Track	•	•
USA Tidal Current and optional MapMedia Tidal Current Atlases	Optional	Optional
Worldwide Tidal Data (Tidal Height)	•	•
Weather (GRIB Data) Overlay	•	•
MaxSea TimeZero Weathercaster for Wind, Waves, Air Pressure and Oceanic Currents	•	•
MaxSea TimeZero Weathercaster for Sea Surface Temperature, Altimetry and Chlorophyll	-	•
Navigation Logbook	•	•
ARPA and AIS	•	•
NavNet Connectivity via Ethernet (NMEA, AIS Data)	•	•
NavNet 3D Radar Overlay	-	•
NavNet 3D Chart License Sharing and Chart Server	-	•
NavNet 3D Route and Waypoint Exchange using SD Memory Card	•	•
NavNet 3D Route and Waypoint Exchange via Network Synchronization	-	•
Optional Routing Module	Optional	Optional

### System Requirements

Your PC must meet the following requirements in order to work with MaxSea TimeZero. Please verify these requirements before installing. Visit the MaxSea web site at [www.MaxSea.com](http://www.MaxSea.com) for updated hardware specifications.

#### MaxSea TimeZero Navigator:

- Windows XP or Windows Vista
- 1.5 GHz Processor (Intel Core2Duo 2GHz recommended)
- 1 GB RAM if using Windows XP, 2GB RAM if using Windows Vista
- 20 GB of hard drive space for software (up to 5 GB for charts)
- CD/DVD drive for installing software and charts
- USB or Serial Port for connecting instruments (adapter required for USB connection)
- Video Board (WDDM Driver, Pixel Shader 2.0, 32 Bits/pixel):  
Minimum: Intel Integrated Chipset 945 or above  
Recommended: Dedicated ATI or NVIDIA card w/256Mb RAM

#### MaxSea TimeZero Explorer:

- Windows XP or Windows Vista
- 2 GHz Processor (Intel Core2Duo highly recommended)
- 2 GB RAM
- 20 GB of hard drive space for software (up to 5 GB for charts)
- Ethernet 10/100 Base-T for NavNet 3D connection
- CD/DVD drive for installing software and charts
- USB or Serial Port for connecting instruments (adapter required for USB connection)
- Video Board (WDDM Driver, Pixel Shader 2.0, 32 Bits/pixel):  
Minimum: Dedicated ATI or NVIDIA card w/256Mb RAM  
Recommended: Dedicated ATI or NVIDIA card w/512Mb RAM  
*Integrated Video Chipset are NOT supported*  
Screen Settings: 1,024 x 768 or higher, 16 Bit (32 Bit recommended)