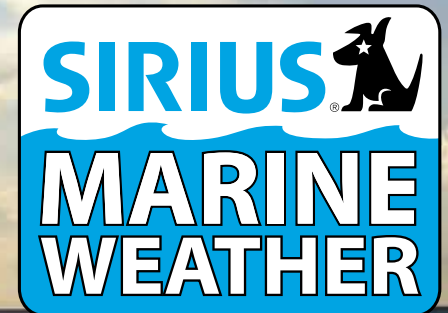


BBWX2

**Live Sirius Marine Weather
on your NavNet TZtouch,
NavNet 3D, and
NavNet vx2!**



Keeping track of weather is about to get easier than ever with Furuno's BBWX2! Furuno and Sirius are teaming up to bring you live, up-to-date weather forecast information to give you peace of mind, no matter when or how you are using your boat. The weather information is obtained from the weather industry's leading experts and is delivered via the BBWX2 digital receiver through Sirius' Marine Weather services.

You will have the ability to receive high-quality and comprehensive weather forecast information directly overlaid onto your charts. You will be provided with premium weather content, such as current weather reports, NOWRad® nationwide high-resolution weather radar imagery, and high-resolution Sea Surface Temperature images that can help fishermen locate hot spots. Now you can have your "weatherman" onboard 24/7 along with your TRUE color Radar/Chart Plotter and Sirius Marine Weather!

Sirius Weather Features

- Up-to-the-minute weather forecasting at sea
- Satellite Sea Surface Temperatures
- Animated NOWRad® weather radar forecasts
- Pressure isobars and frontal boundaries
- Squall lines and surface pressure
- Wind forecasts using wind barbs or arrows
- Marine text forecasts
- Lightning strike reports & storm tracking
- Buoy reports
- Wave height forecasts
- Onboard 4-Port Ethernet Hub

Note: Features & specifications subject to change without notice

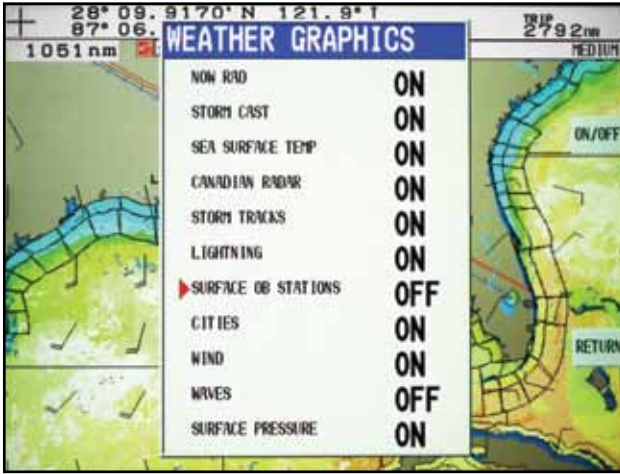


Available for NavNet TZtouch, NavNet 3D, and C-MAP by Jeppesen versions of NavNet vx2

FURUNO

www.Furuno.com

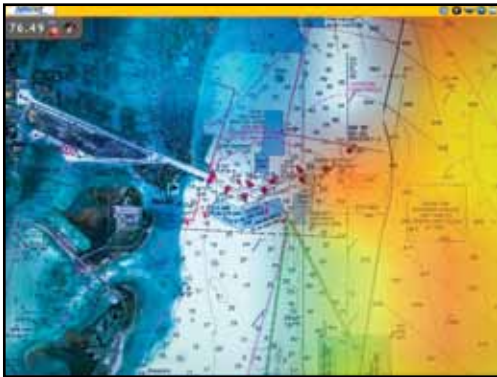
Your Chart Plotter has just become your weather central.



Screen shot from NavNet vx2

Furuno is the provider of the most complete and versatile weather solution available on the market today. It started with the FAX30 Weather Fax and then the PB150 Ultrasonic Weather Station. Now, with the addition of the BBWX2 Sirius Satellite Weather Receiver, no other multi-function navigation system offers a more complete weather solution for your vessel.

Furuno's BBWX2 allows you to overlay up-to-the-minute weather information right over your charts. As shown on the screen at left, displaying a variety of weather information is as simple as turning on or off a switch, which allows you to be in control of the information you want to see. What's even more amazing is that this is all done on your chart, which means you can plan your routes based on specific weather information.



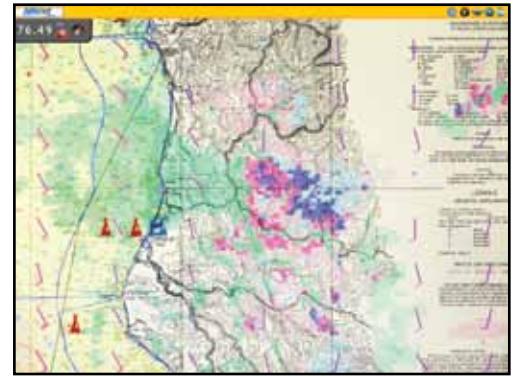
Sea Surface Temperature

Get a visual reading on varying surface water temperatures, with red showing the warmest and blue showing the coldest areas.



NOWRad® Weather Radar Overlay

Get real-time weather radar overlay on your chart, showing levels of precipitation in varying colors according to density.

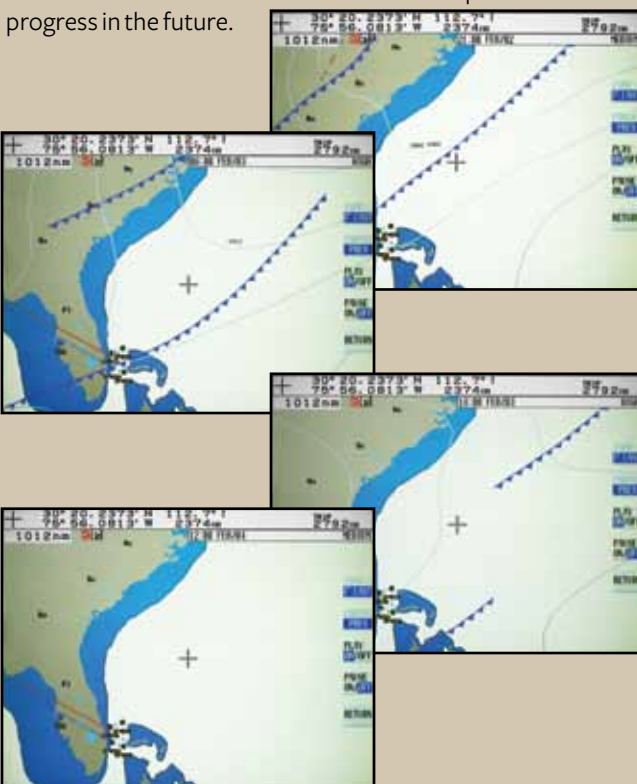


Surface Pressure and Wind

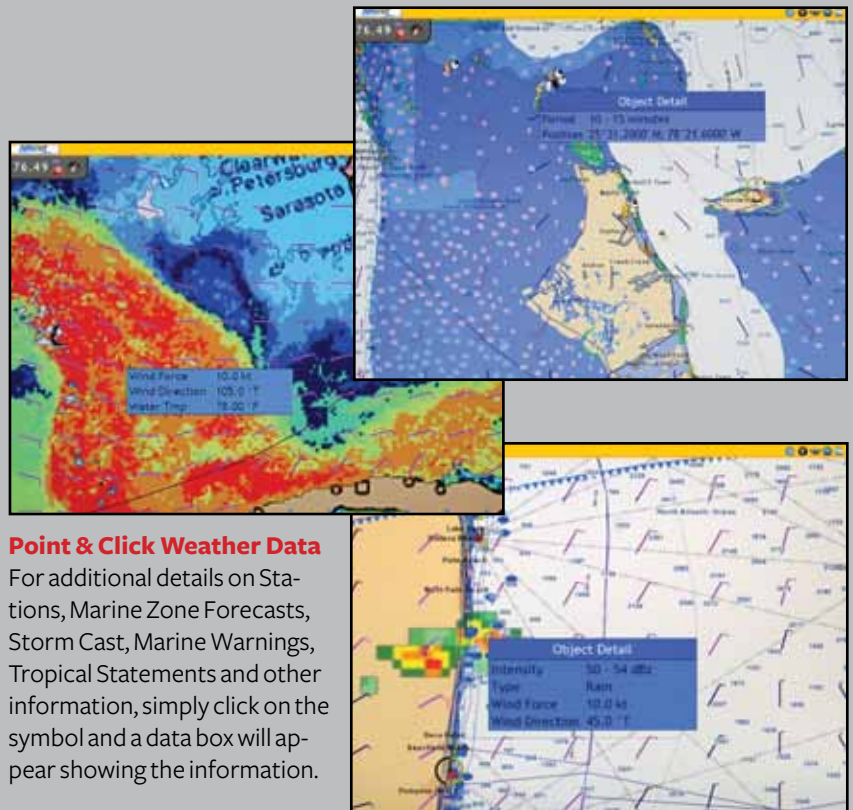
Display pressure isobars and frontal boundaries on your screen. Also determine wind strength and direction with wind feathers.

Animated Forecasts

When planning a voyage, you can animate pressure, wind or wave forecasts to see how these items are predicted to progress in the future.



Screen shots from NavNet vx2



Point & Click Weather Data

For additional details on Stations, Marine Zone Forecasts, Storm Cast, Marine Warnings, Tropical Statements and other information, simply click on the symbol and a data box will appear showing the information.

Screen shots from NavNet 3D